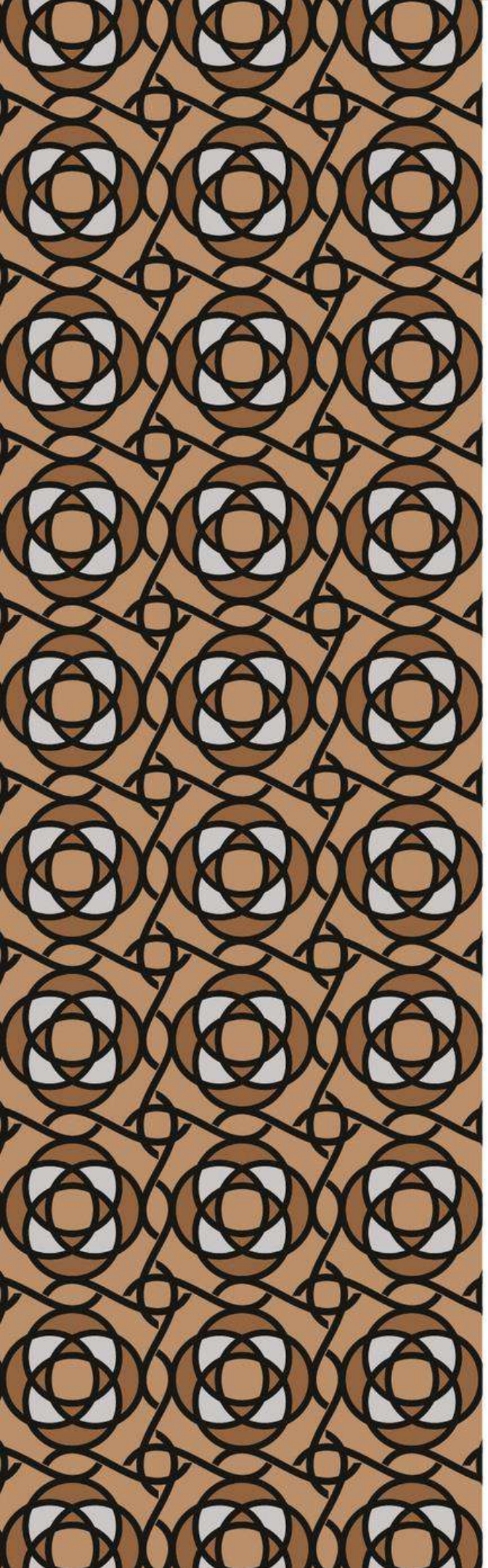


The Yellow House

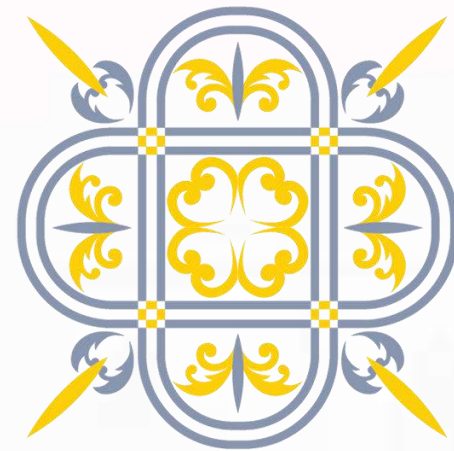
IHCL SELEQITIONS



Anjuna, North Goa



Timeless Elegance Meets Vibrant Goan Energy



LOCATION

Nestled in the lively Anjuna neighborhood with easy access to the famed Vagator-Assagao-Anjuna belt, guests can explore the best of the area's beaches, markets and nightlife



Manohar International Airport (GOX)
29 Km | 35 Mins

Goa International Airport (GOI)
46 Km | 1.5 Hrs

Anjuna Beach
1.2 Km | 5 minutes

IHCL Hotels & Resorts In North Goa:

Taj Fort Aguada Resort and Spa, Goa | 10 Km | 29 Mins

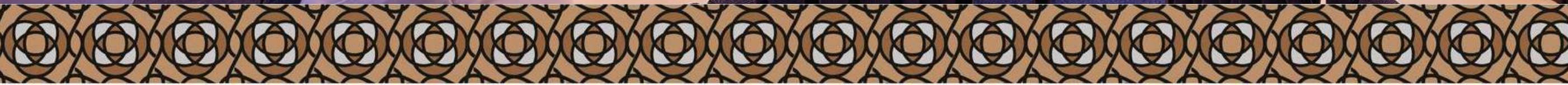
Taj Holiday Village Resort & Spa, Goa | 9.6 Km | 27 Mins



History

The Yellow House is a stunning example of Goa's rich heritage, carefully restored to blend traditional Goan Portuguese style with modern luxury. A destination where guests can experience the best of both worlds – the charm and nostalgia of the past, combined with all the indulgences of the present. The Yellow House is a heritage property that honors the region's cultural past while offering modern convenience and comfort. Set amidst the tranquil beauty of Goa's picturesque landscape, The Yellow House is a haven of peace and serenity, offering guests a true escape from the hustle and bustle of everyday life. With its authentic decor, delicious cuisine, and easy going atmosphere, this property captures the essence of "susegad" in every way.







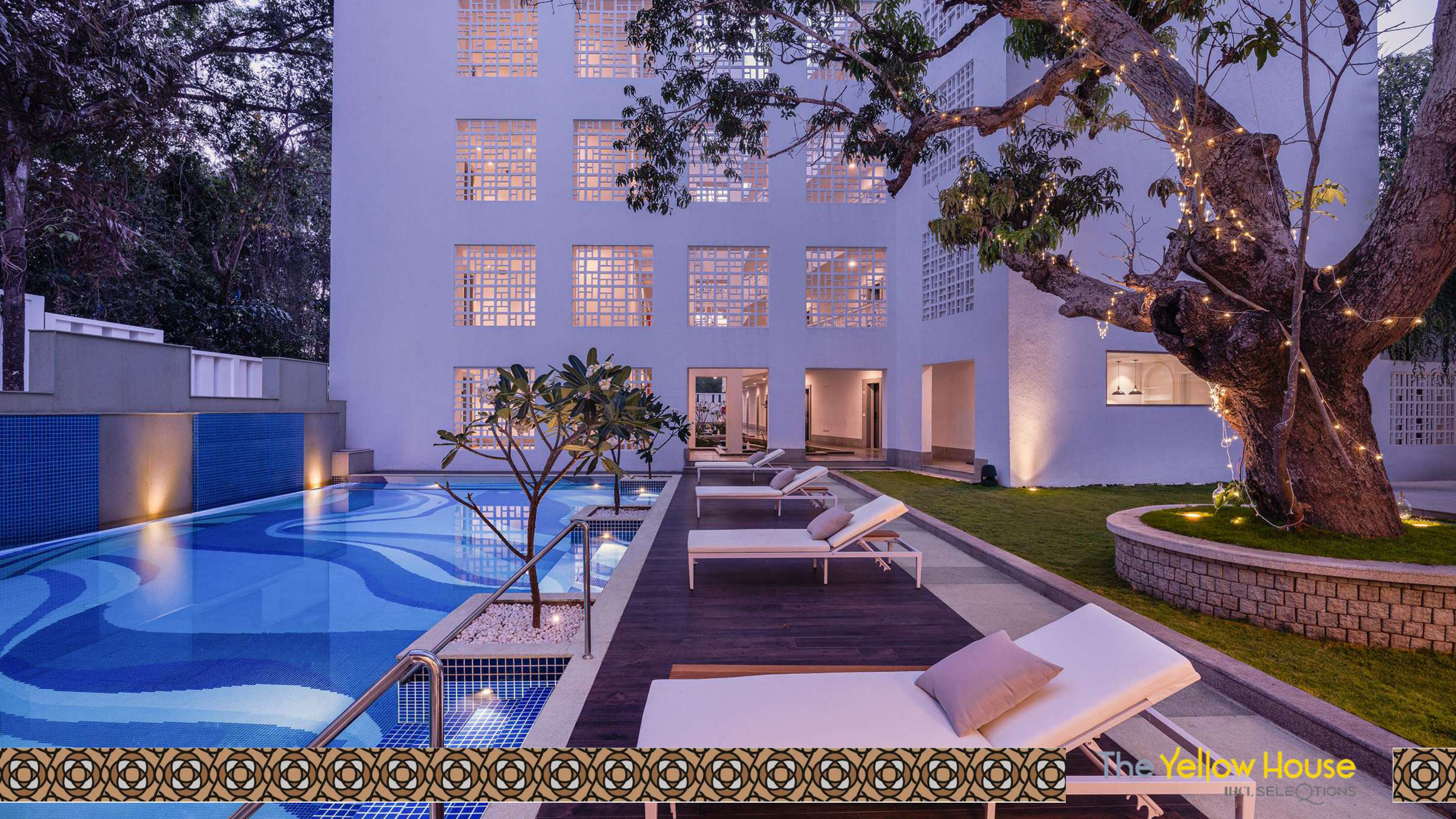
A Stay To Remember

Nestled amidst the verdant landscape of Goa, The Yellow House offers a stay that is truly unforgettable. The property boasts of two wings - the Modern Wing and the Heritage Wing - each exuding its own unique charm and character. The Modern Wing is a celebration of design reflecting Goan roots in the flooring and the furnishings. The rooms that are spread across two levels, each of which are tastefully appointed and come equipped with luxurious amenities. The ground level rooms come with a private splash pool or a serene garden, while the deluxe rooms and suites feature balconies that overlook the lush surroundings. On the other hand, the Heritage Wing is a reflection of the region's rich cultural heritage, featuring two spacious rooms that are perfect for families, and come with all the modern conveniences that one could ask for.



The Yellow House
IHCI. SELEQTIONS





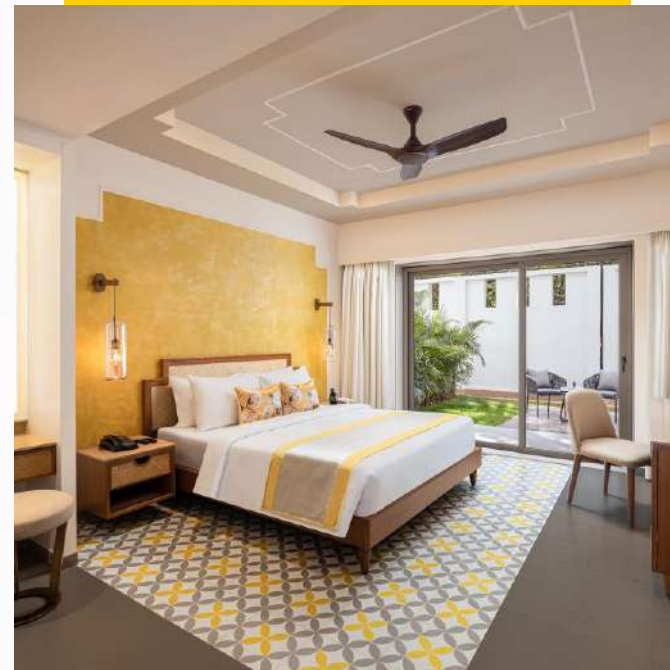


008

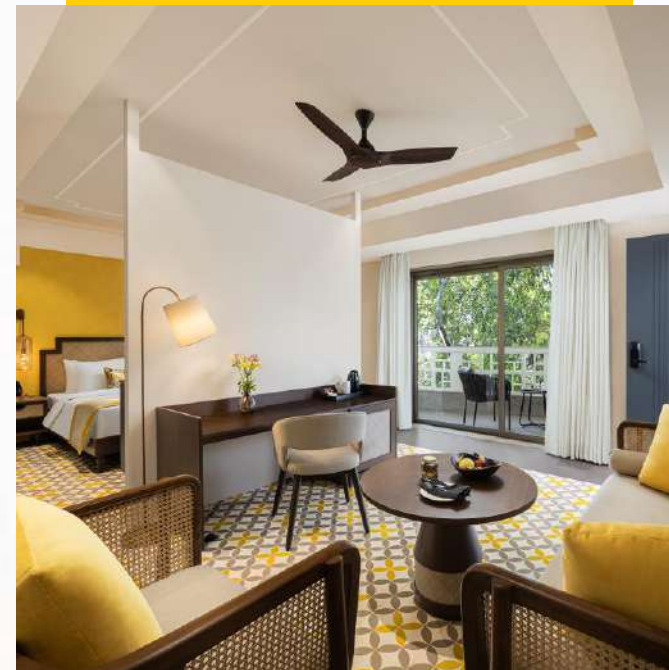
ACCOMMODATION



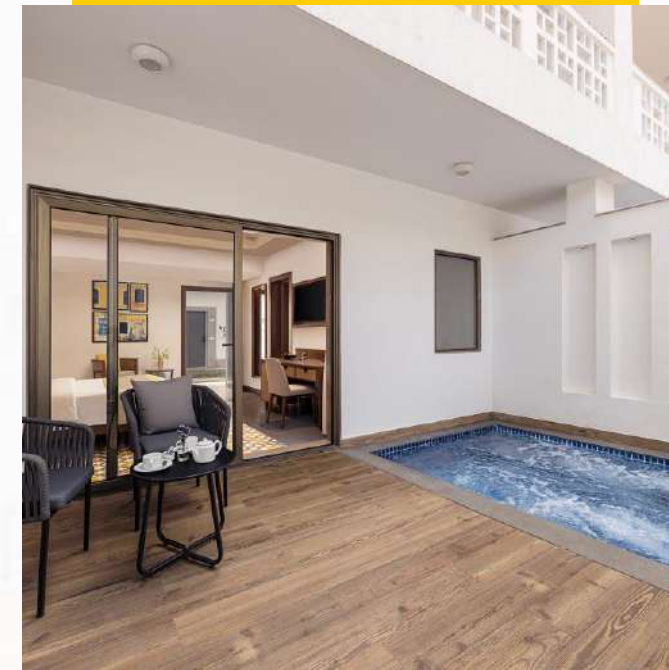
**Deluxe Room
With Balcony**



**Deluxe Room
With Garden**



**Premium Room
With Balcony**



**Premium Room
With Plunge Pool**



SeleQtions Suite

DELUXE ROOM WITH BALCONY

Area

29.50 Sq. Mtrs

Maximum Capacity

3 Guests

Number Of Keys

34

Star Feature

Private Balcony
With Sit Out





DELUXE ROOM WITH GARDEN

Area	28.50 Sq. Mtrs
Maximum Capacity	3 Guests
Number Of Keys	4
Star Feature	Private Garden With Sit Out





The Yellow House

TRU SELECT



PREMIUM ROOM WITH BALCONY

Area

32.70 Sq Mtrs

Maximum Capacity

3 Guests

Number Of Keys

4

Star Feature

Private Balcony
With Sit Out







PREMIUM ROOM WITH PLUNGE POOL

Area	28.50 Sq. Mtrs
Maximum Capacity	3 Guests
Number Of Keys	6
Star Feature	Private Plunge Pool







SELEQTIONS SUITE

Area

52.90 Sq. Mtrs

Maximum Capacity

3 Guests

Number Of Keys

1

Star Features

Private Balcony
With Pool View

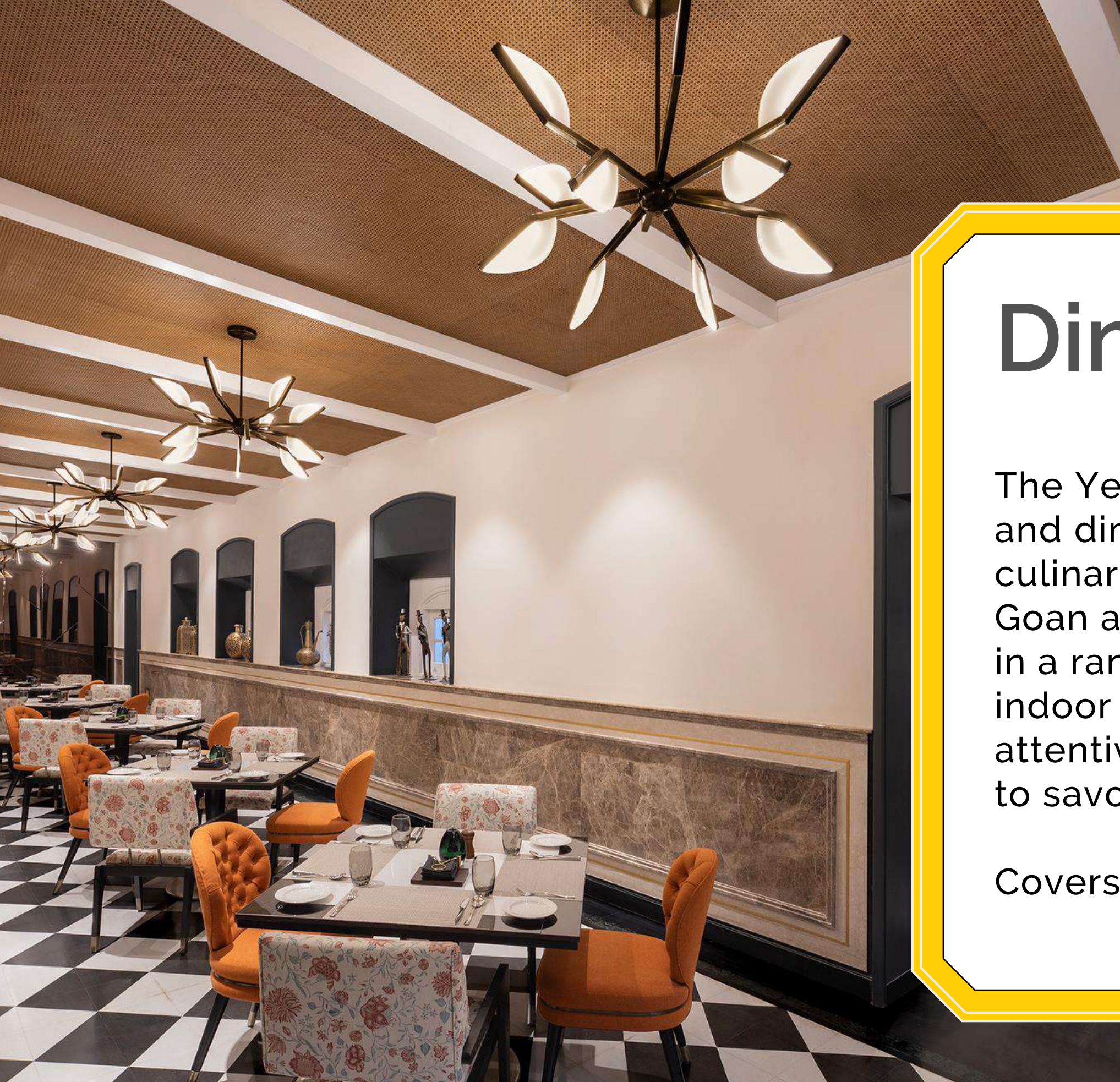
Located In The
Heritage Wing











Dining At Pa|ette

The Yellow House offers an unparalleled wine and dine experience that is nothing short of a culinary masterpiece. With a perfect blend of Goan and European cuisine, guests can indulge in a range of culinary delights. The al fresco and indoor dining options, coupled with warm, attentive service, provide the perfect ambience to savour every bite.

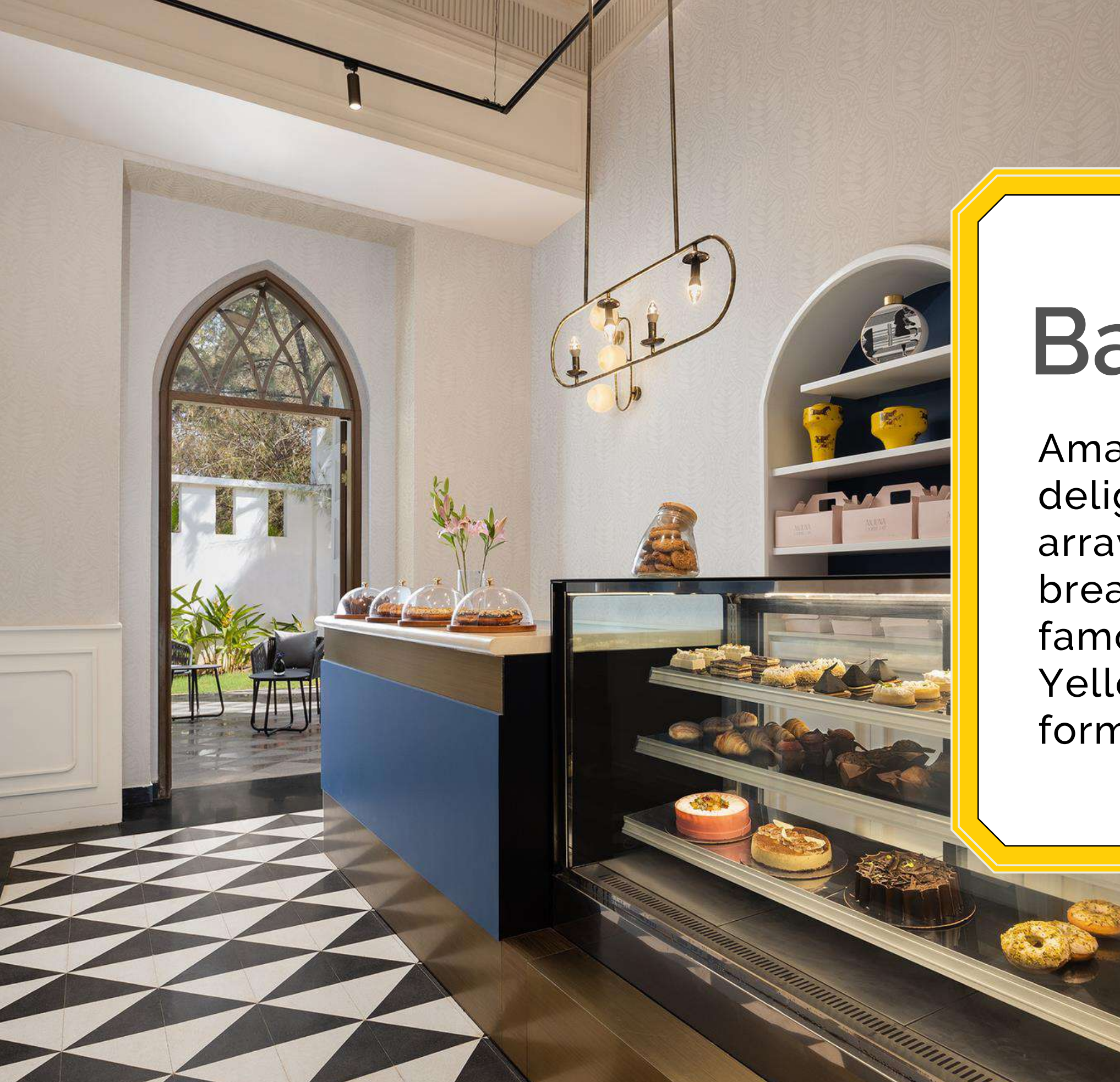
Covers: 54





The Yellow House
INTERSELECTIONS





Bakery: Amarela

Amarela our in-house bakery is a delight for the senses, displaying an array of freshly baked patisserie, breads and confections including the famous Goan dessert, Bebinca. At The Yellow House, dining is truly an art form that is crafted to perfection.



Botequim

The bar, serving a curated selection of craft cocktails infused with native ingredients is a destination in itself, with its stunning design reminiscent of old world clubs.

Covers: 30



Elegancia

The ballroom at The Yellow House is where moments of pure joy and celebration are born, with its grandeur and space it is an idyllic venue for intimate gatherings and special occasions.

Star Feature: Pillarless | Indoor & Outdoor



Style	Capacity
Theatre	120
Reception	80
Circular	80
Boardroom	60





Signature Experiences

- The Signature High Tea at Amarela
- Gosana: Private Yoga & Meditation
- Private Couple's Dining
- Masters Of Mixology

Thank You!



SELECTIONS

VIVANTA

GINGER

amã
STAYS & TRAILS

Qmin
guaranteed quality cuisine

