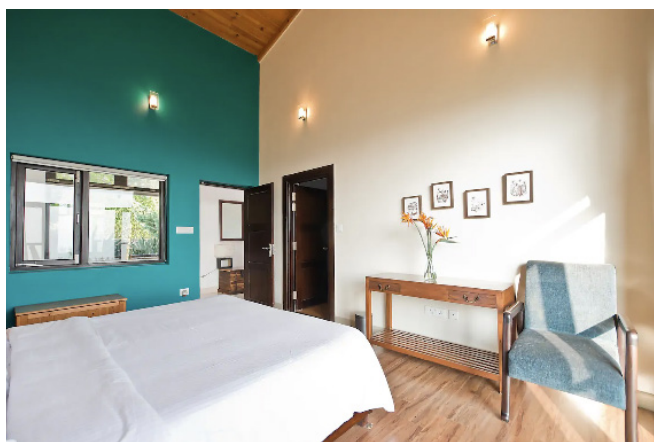




The Tree of Life Junoon in the Hills, Kumaon, Nainital Dist.

Solitude, open spaces, private sit-outs, serenity, mountain views as far as the eye can go – these are just some of the offerings at the Tree of Life Junoon in the Hills. And you realize the ‘junoon’ only when you reach there – just six very comfortable rooms in over 3 acres of land, with the most amazing gardens at 4,500 feet, halfway between Nainital and Ranikhet in the Kumaon Hills. A stop at the very famous Kainchi Dham is well recommended en-route to us.



The Accommodation:

Willow House (2 Garden Rooms)

A charming independent cottage, just a short walk from the main House, comes with two individual rooms with attached bathrooms and a small common area. Each of these also have their very large sit-outs for that morning ‘cuppa’ or then that evening bonfire with drinks, friends or family. These are booked collectively and just the ideal for two couples travelling together.

Cedar Villa (4 Mountain View Rooms)

The main House, Cedar Villa, is set along beautiful gardens, with all the spacious and well lit rooms looking onto an amazing view of the mountains. The rooms take inspiration from colour – The Yellow Room, The Blue Room, The Green Room and Lilium. They can be booked in sets of two or four rooms.

You also have the option of booking the entire property with all six rooms.

All our rooms are non smoking and come with double beds (can be turned into two single beds also), electric blankets to keep you warm in winters and air conditioning for that occasional warm summer day. The Cedar Villa rooms come with a walk in closet for your baggage. The attached bathrooms are spacious, with running hot and cold water (geyser with solar backup) and a small heater for that cold winter night ! Tea/coffee makers are provided in all rooms. We do not have individual televisions in our rooms – there is one large screen television in The Living Room.



The Dining:

We do not have any designated ‘restaurant’. Our Dining Room comes with large mountain view windows all around and is part of the open kitchen. It has a large wooden dining table to seat 10 people, where fresh cooked food is served from the adjoining kitchen. We offer Indian, Pahadi delicacies and a limited Continental option, with each meal creating a different experience for you. There are also options for outdoor dining, so do speak with your Host.

Breakfast is served from 0830 to 1000 hrs; lunch from 1300 to 1430 hrs; and dinner from 2000 to 2200 hrs. We do not offer Room Service for meals. We do not keep alcohol. Kindly carry your own, should you so desire.

Facilities:

- **The Drawing Room:** Is an airy, glass fronted room which opens onto a large covered deck with an amazing view of the mountains. It has an electrically heated floor and a wood burning cast iron stove to keep you cosy during winters or then air conditioning, should it get a bit warm during summer daytime. Teak furniture and artefacts adds to the romance of the space.
- **The Living Room:** Half way above the Drawing Room is this large and open casual hangout with comfortable sofa seating and an attractive wooden roof. It has a common large screen TV, a PC and a Pool Table (only for above 15 years olds).
- **Zen Garden** - In our beautifully laid out gardens, is a huge stone Buddha statue, all the way from Bali. Spend some time with yourself here, in serene and calm surroundings with nothing other than silence, the chirping birds and the mountains around you for company.
- **Pond Deck** - An amazing Willow tree shades this private sit out next to a pond. Just the place to relax, sip a drink and finish that unfinished book !
- **Vista Point** - If it is a quiet interaction with the mountains is what you want, sitting on the swing here is just your moment ! And on a clear day - the snow clad mountain range is right there in front of you.
- **Fitness** - While we strongly recommend walking in the acres of land around you, we have a small but very well equipped Gym for the extra fitness conscious. Yoga mats are also available. We also have two cycles for your fun.



Getting There:

New Delhi is 325 kms/8 hours drive from us. You should drive on the highway all through to Rampur and then onto Bhimtal, Bhowali, Kainchi Dham, turning left at Khairna Bridge. The last 4 kms to the property is being resurfaced and hence uneven.

The closest airport is Pantnagar 90 kms/3 hours and Kathgodam Railway Station is 60 kms / 2 hours from the property.

Activities:

Once with us, there are little chances that you would like to step out from the property. The open spaces, the serenity, the views along with the amazing gardens will keep you entrapped. However, we strongly recommend some enjoyable walks along the country roads with beautiful valley and snow capped Himalayan views in the winters. For the more adventurous, there are mountain trails winding through small villages all the way down to the stream at Garampani. Our team will be glad to assist.



The property is also very well situated for day trips to interesting 'tourist' destinations. Nainital and Ranikhet are just over an hour's drive, with Mukteshwar and other Kumaon destinations slightly further away.

The villages of Darmani and Garampani are a haven for bird spotting. The Red-vented Bulbul, Himalayan Bulbul, Red-throated Flycatcher, Pied Kingfisher, Peregrine Falcon, Crested Kingfisher, Black Kite are some amongst many others that you can see. So if this interests you, you certainly have a field day with us !

And for those who prefer the indoors - we have a small but very well equipped Gym or then spend time at the Pool Table.

Address:

Tree of Life Junoon in the Hills

Darmani Village, Dist Nainital 263135
Uttarakhand

Reservations:

Tel: +91 9015242000 / unwind@treeofliferesorts.com

Tel: +91 9251647305 / celebrate@intimatemoments.in