

TAJ
WEST END
BENGALURU

EVENTS AND OCCASIONS



Nestled amidst 20 acres of flora and defined by illustrious heritage and colonial elegance, Taj West End has been a landmark for countless occasions over the last 135 years. From small spaces for intimate gatherings to grand celebrations in the large banquet halls, the hotel has hosted iconic ballroom dances, high-profile assemblies, royal banquets, and professional meetings. Its opulent venues and exquisite service make it the preferred choice for both business and social occasions.

Today, Taj West End offers 7 grand venues, elegantly enhanced with modern facilities and improved connectivity, while retaining its timeless glory and old-world charm. An entourage of banquet planners and hospitality experts ensure every event is managed with utmost care and panache.



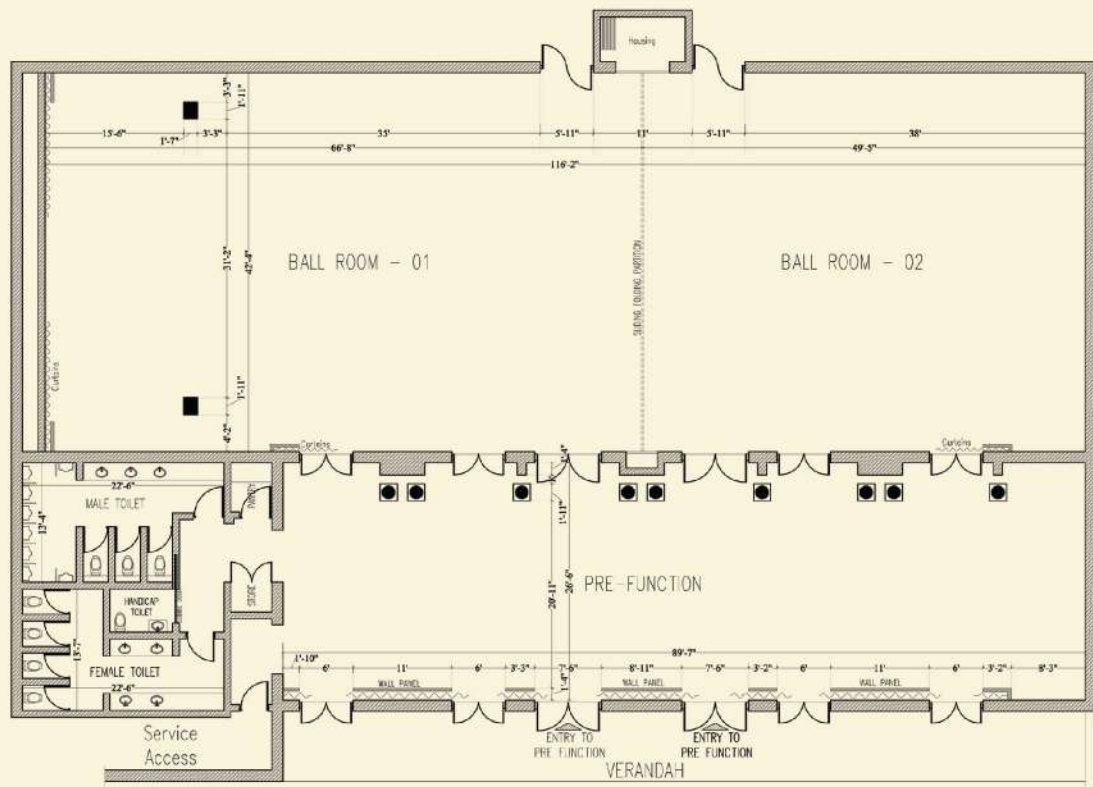
BALLROOM








A setting of timeless grandeur, the Ballroom unfolds in ivory and fiery reds, with the versatility to host up to 400 guests or transform into two intimate venues. From grand celebrations to private gatherings, it remains one of Bengaluru's most distinguished addresses for every occasion.



BALLROOM - FLOOR PLAN



DIMENSIONS & SEATING CAPACITIES

Area (sq. m.)	Dimensions (mtr)	Ceiling Height (mtr)	 U Shaped	 Classroom	 Theatre	 Cluster	 Floating
460	10.9 x 3.9	13	100 pax	-	350 pax	180 pax	500 pax

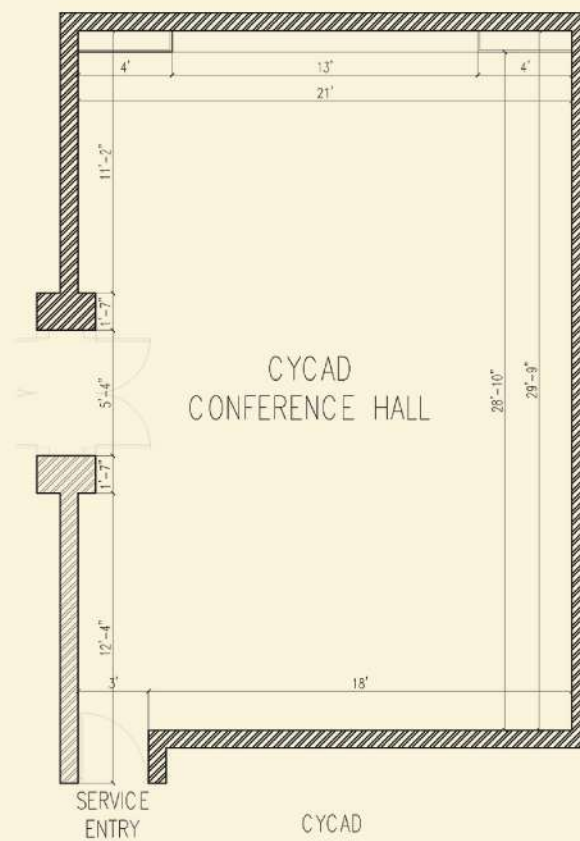
CYCAD




Cycad offers an intimate setting in warm earthy tones, enhanced by elegant gold accents. With state-of-the-art amenities and seamless hospitality, it ensures every meeting and event is carried out effortlessly.



CYCAD - FLOOR PLAN



DIMENSIONS & SEATING CAPACITIES

Area (sq. m.)	Dimensions (mtr)	Ceiling Height (mtr)	    				
			U Shaped	Classroom	Theatre	Cluster	Floating
52	2.6 x 1.9	10	12 pax	-	20 pax	18 pax	18 pax

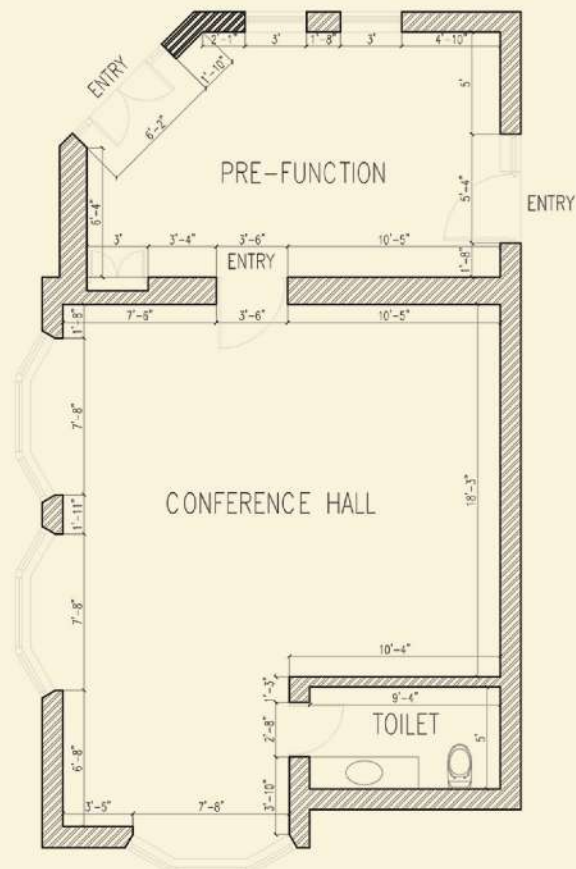
GULMOHAR HALL








Gulmohar Hall brings regal charm to meetings and intimate celebrations alike. Overlooking a private garden, it flows effortlessly into nature, with cream and soft yellow tones adding to its understated elegance. With refined amenities and Taj's intuitive hospitality, this is the perfect setting for memorable occasions.



GULMOHAR HALL - FLOOR PLAN



DIMENSIONS & SEATING CAPACITIES

Area (sq. m.)	Dimensions (mtr)	Ceiling Height (mtr)	    				
			U Shaped	Classroom	Theatre	Cluster	Floating
52	1.9 x 1.6	10	12 pax	-	20 pax	15 pax	-

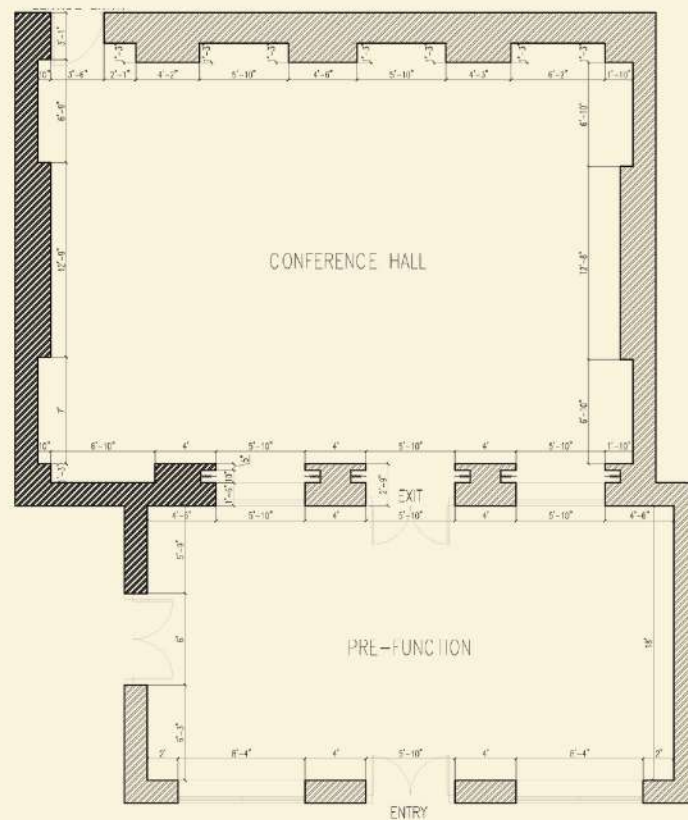
PLUMERIA








A well-appointed hall with an adjoining pre-function area, Plumeria comes complete with modern amenities and is perfectly suited for intimate weddings and private events.



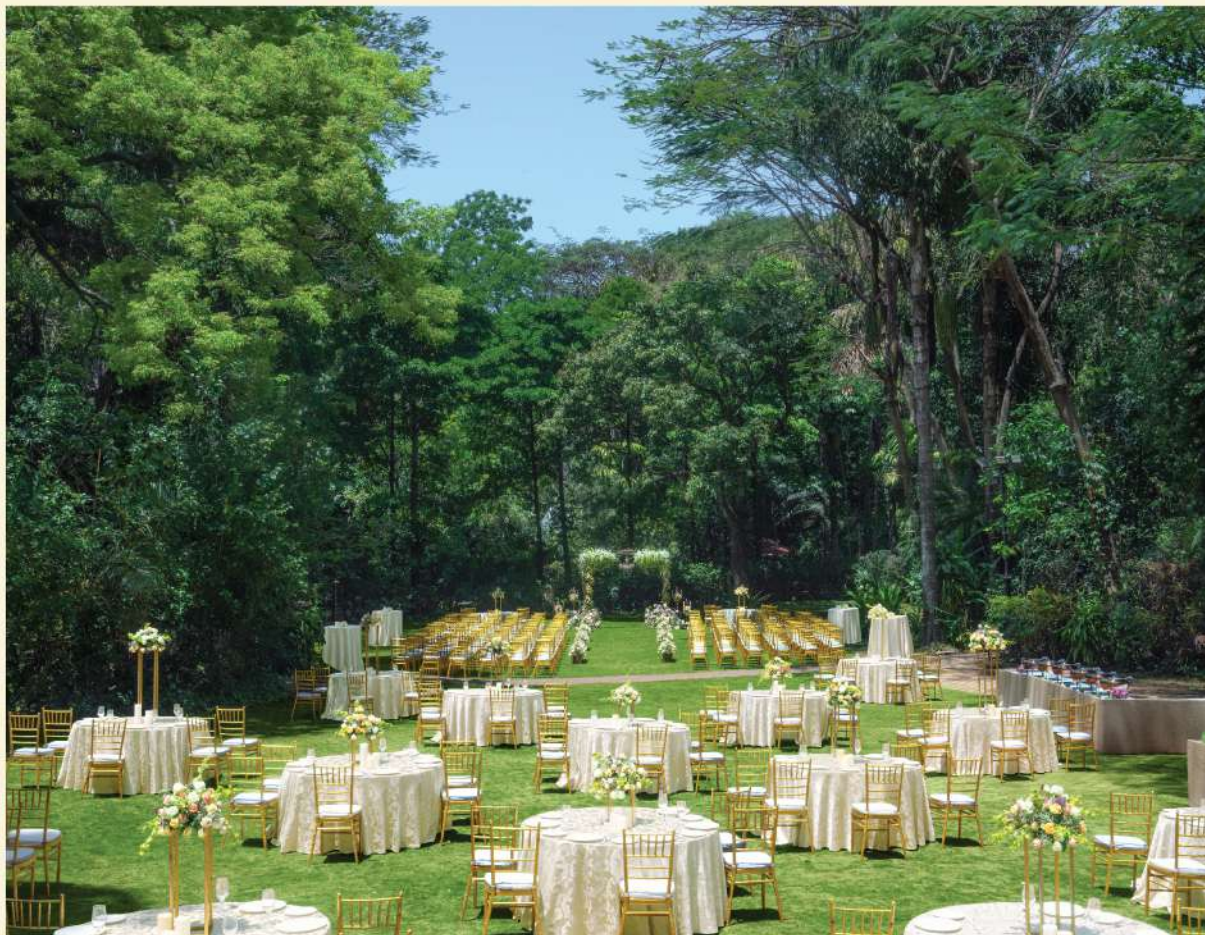
PLUMERIA - FLOOR PLAN



DIMENSIONS & SEATING CAPACITIES

Area (sq. m.)	Dimensions (mtr)	Ceiling Height (mtr)	    				
			U Shaped	Classroom	Theatre	Cluster	Floating
102	3.6 x 2.6	10	25 pax	-	40 pax	30 pax	60 pax

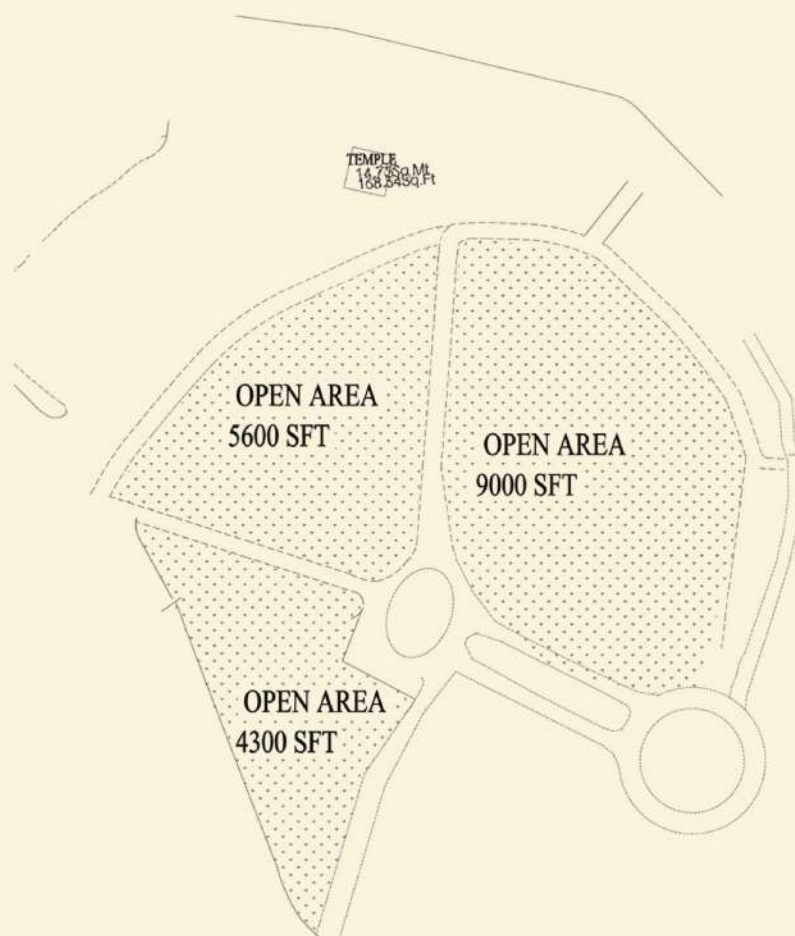
PRINCE OF WALES LAWNS








Renamed in honour of Prince Charles after his stay in the early '90s, the Prince of Wales Lawns is a sprawling garden in the heart of the city. Spanning 1,115 sq. mt., its exquisitely manicured grounds create an idyllic backdrop for weddings and grand celebrations.



PRINCE OF WALES LAWNS - FLOOR PLAN



DIMENSIONS & SEATING CAPACITIES

Area (sq. m.)	Dimensions (mtr)	Ceiling Height (mtr)	    				
			U Shaped	Classroom	Theatre	Cluster	Floating
1115	-	-	-	-	800 pax	300 pax	1200 pax

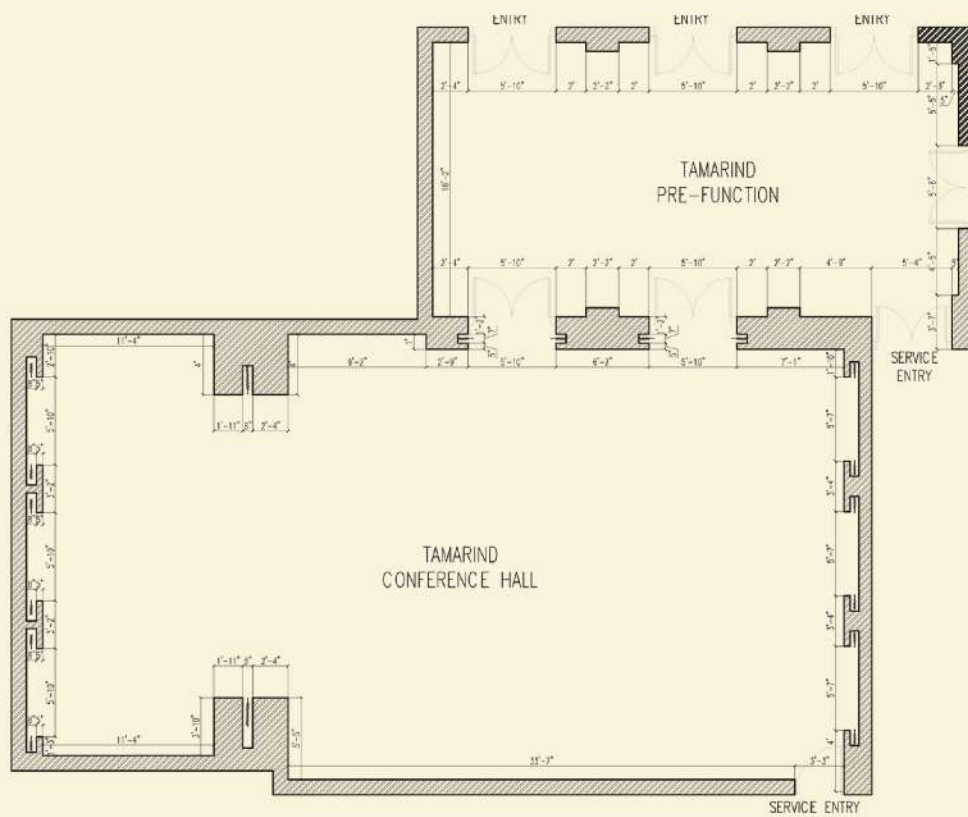
TAMARIND




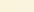

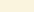

Tamarind offers a spacious venue connected to a pre-function area, making it the perfect choice for a themed evening and intimate celebrations.



TAMARIND - FLOOR PLAN



DIMENSIONS & SEATING CAPACITIES

							
Area (sq. m.)	Dimensions (mtr)	Ceiling Height (mtr)	U Shaped	Classroom	Theatre	Cluster	Floating
132	15 x 9	12	25 pax	-	60 pax	40 pax	100 pax

WEST END COURT

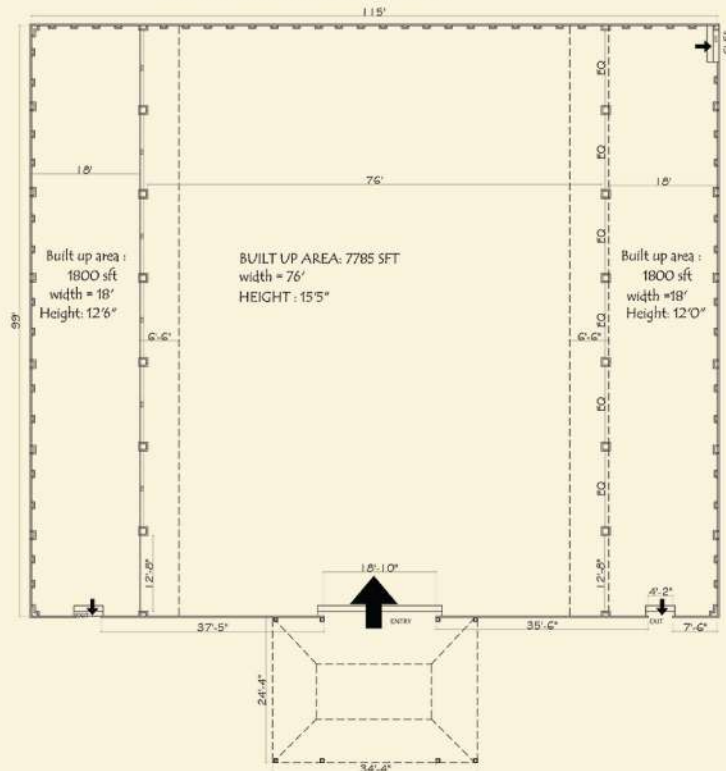


Named in honour of the hotel's illustrious 130-year legacy, West End Court is distinguished by deep green walls, a chandeliered ceiling, and expansive views of the gardens.


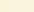

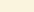



WEST END COURT - FLOOR PLAN

TOTAL BUILT UP AREA: 11385 SFT



DIMENSIONS & SEATING CAPACITIES

							
Area (sq. m.)	Dimensions (mtr)	Ceiling Height (mtr)	U Shaped	Classroom	Theatre	Cluster	Floating
1057	9.1 x 10.6	15	300 pax	200 pax	800 pax	370 pax	1200 pax

