



TAJ FATEH PRAKASH PALACE  
UDAIPUR



EVENTS AND OCCASIONS





*Taj Fateh Prakash Palace, Udaipur is a sunlit jewel on the banks of Lake Pichola, part of the iconic City Palace complex, built in the 19th century by Maharana Fateh Singh for royal gatherings. Today, it seamlessly blends heritage grandeur with modern luxury, making it an exceptional destination for both leisure and business. With majestic halls, serene courtyards, lush lawns and intimate meeting rooms, the palace offers world-class MICE facilities from grand weddings and social galas to corporate conferences and exclusive board meetings, all set against the breathtaking backdrop of Udaipur's lakes and Aravalli hills.*



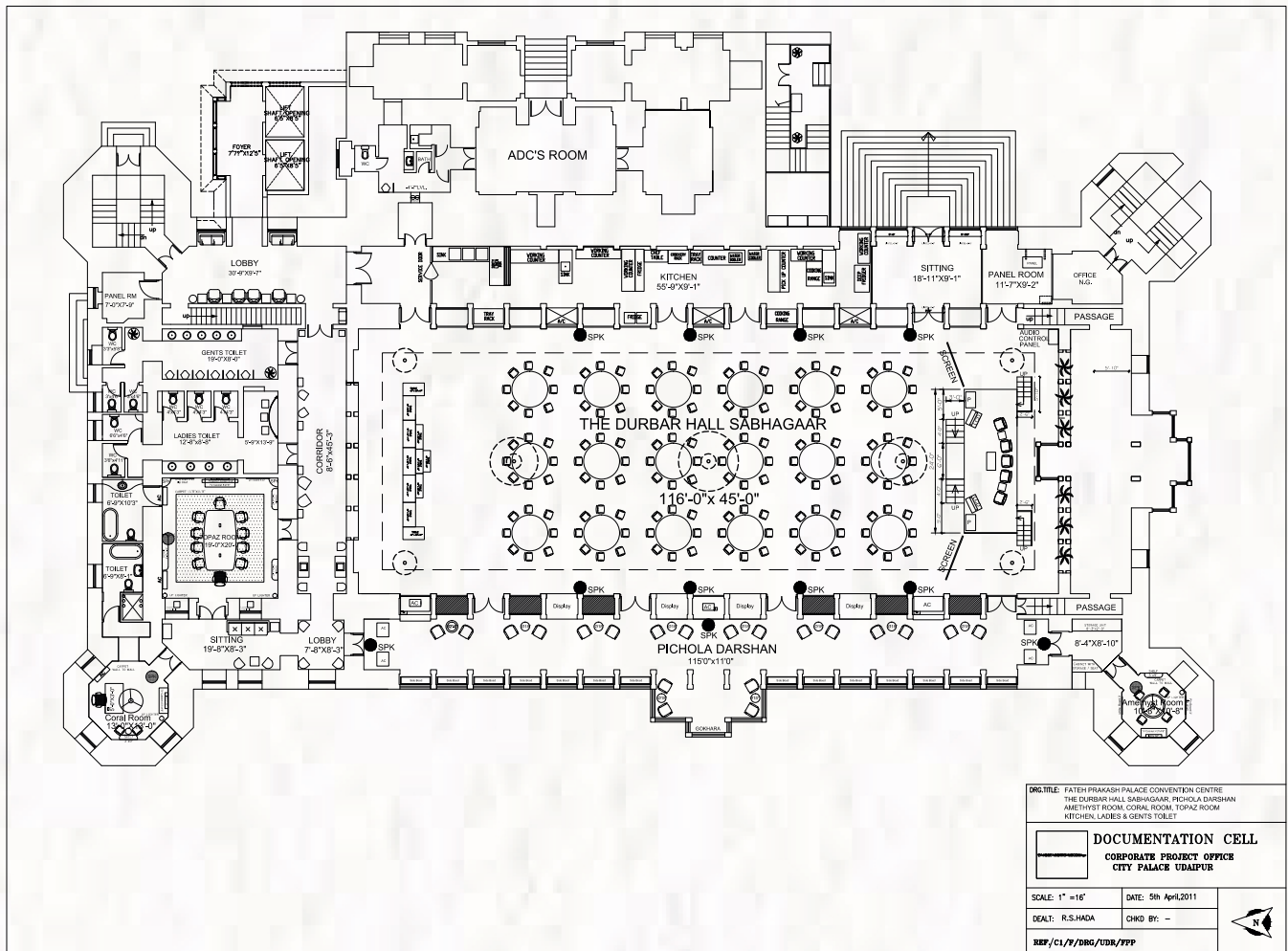
## DURBAR HALL SABHAGAAR



*The grand Durbar Hall Sabhagaar is a regal venue steeped in history and splendor. With soaring ceilings, ornate chandeliers and intricate royal décor, it is designed to host majestic gatherings. Ideal for weddings, conferences, or large celebrations, this hall offers flexible layouts theatre, cluster, or boardroom style ensuring every event is tailored to perfection.*



## SABHAGAAR - FLOOR PLAN



## DIMENSIONS & SEATING CAPACITIES

	Area	Dimensions	Ceiling Height	U Shaped	Rectangle	Classroom	Theatre	Round Table	Floating
Sabhagaar	481	35.66 x 13.5	7.92	164	110	231	390	150	144



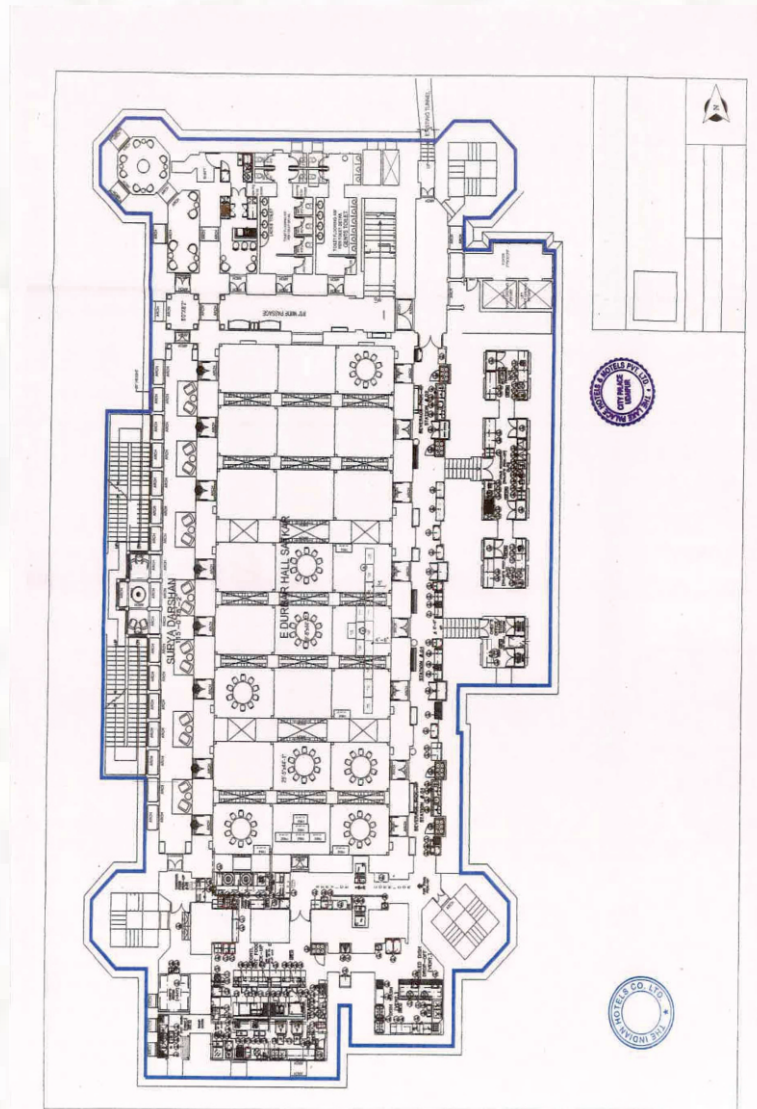
## DURBAR HALL SATKAR



*Slightly more intimate yet equally resplendent, the Durbar Hall Satkar exudes timeless elegance. The hall's stately ambience and classic design make it an excellent choice for corporate functions, social gatherings and cultural evenings. Its versatile set-up accommodates a range of event formats while preserving the palace's royal charm.*



## SATKAR - FLOOR PLAN



### DIMENSIONS & SEATING CAPACITIES



	Area	Dimensions	Ceiling Height	U Shaped	Rectangle	Classroom	Theatre	Round Table	Floating
Satkar	471	35.05 x 13.41	7.92	NA	NA	NA	NA	152	152



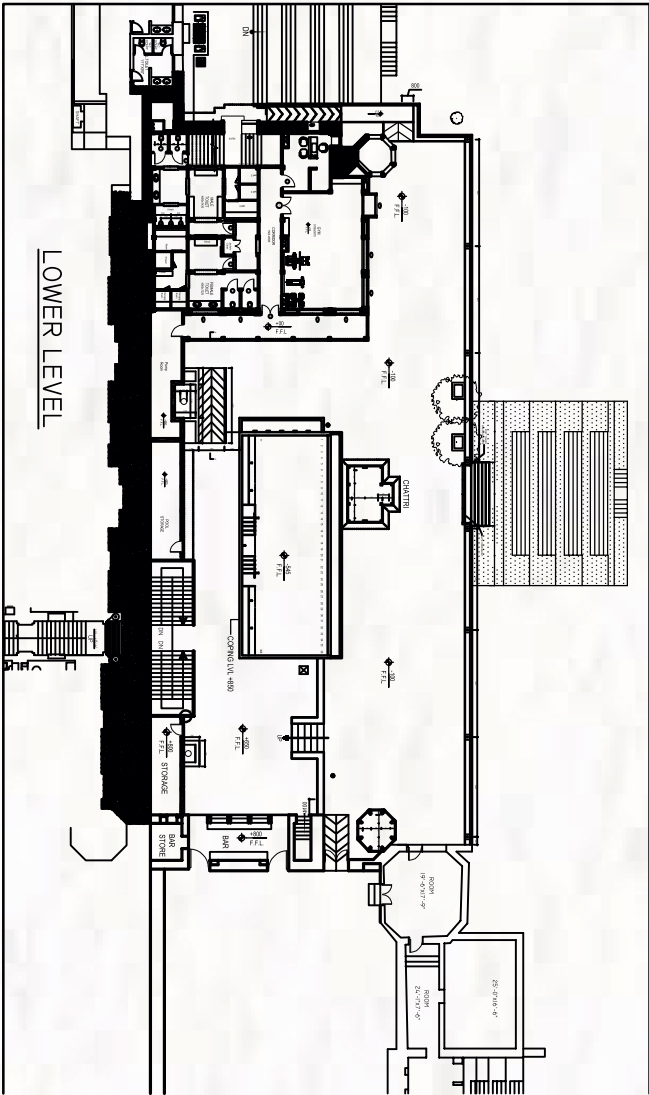
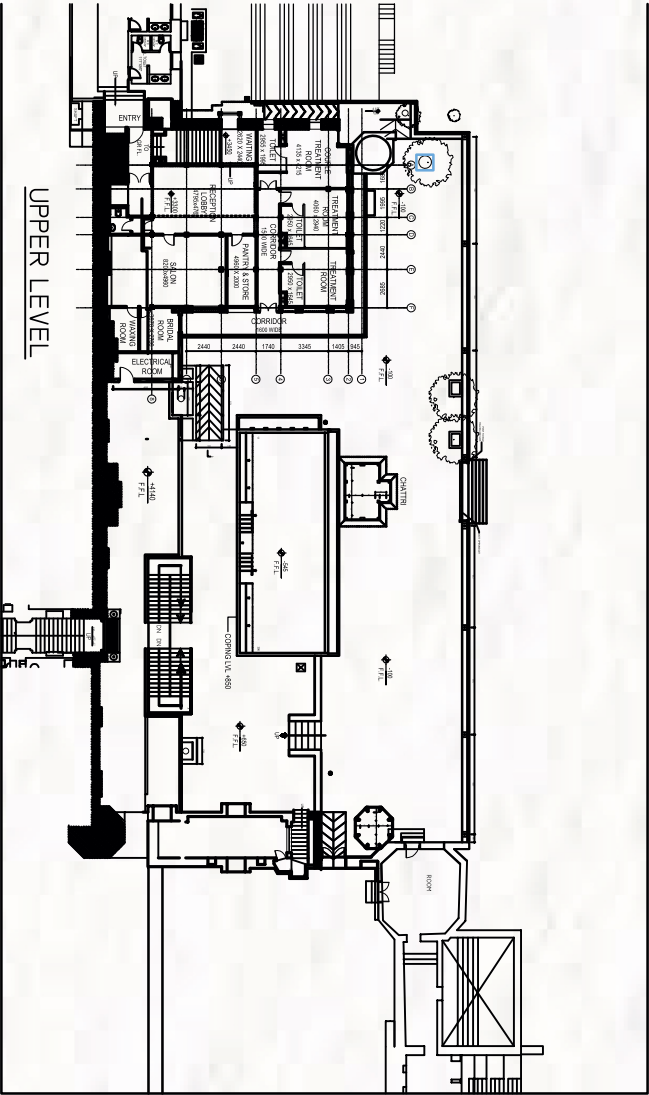
## POOLSIDE



*Set against the shimmering waters of Lake Pichola and the Aravalli hills beyond, the Poolside venue offers a picture-perfect backdrop for evening soirees, cocktail receptions and intimate celebrations. The tranquil setting, enhanced by soft lighting and lake breezes, transforms every event into a magical affair under the stars.*



POOLSIDE - FLOOR PLAN





# NAZAR BAAGH



*Overlooking Lake Pichola, Nazar Baagh is an expansive open-air garden venue, ideal for grand weddings, gala dinners and cultural festivities. The lush greenery, coupled with sweeping views of the palace and lake, adds an air of grandeur and romance to every occasion hosted here.*



## ANAND CHOWK



*Anand Chowk is a heritage courtyard steeped in regal charm. With its traditional architecture, open skies and palace surroundings, it serves as a versatile venue for day and evening events. Perfect for mehfilis, sit-down dinners and wedding ceremonies, this courtyard blends heritage with hospitality in an unforgettable way.*





## RANG CHOWK



*True to its name, Rang Chowk is a vibrant courtyard space that resonates with festive energy. Ideal for colorful celebrations, pre-wedding functions, or cultural performances, this venue brings together the rich traditions of Rajasthan and the elegance of palace hospitality.*



## MEETING ROOMS



*For intimate meetings and executive gatherings, Taj Fateh Prakash Palace offers a suite of exclusive meeting rooms. Amber accommodates 30 guests, Onyx 19 guests, Topaz 14 guests, while Amethyst, Coral and Jade are perfect for 5 to 6 guests each. Each meeting space is equipped with modern amenities while retaining the regal aura of the palace, ensuring business is conducted with grace and sophistication.*





DIMENSIONS & SEATING CAPACITIES



Area	Area	Dimensions	Ceiling Height	U Shaped	Rectangle	Classroom	Theatre	Round Table	Floating
Sabhagaar	481	35.66 x 13.5	7.92	164	110	231	390	150	144
Satkar	471	35.05 x 13.41	7.92	NA	NA	NA	NA	152	152
Amber	31.3	5.66 x 5.57	3.93	NA	NA	NA	30	NA	NA
Onyx	44.22	5.66 x 7.89	3.93	19	NA	NA	NA	NA	NA
Topaz	35.3	5.79 x 6.09	3.93	NA	14	NA	NA	NA	NA
Amethyst	12.3	3.29 x 3.29	4.02	NA	NA	NA	NA	NA	5
Coral	15.7	3.96 x 3.96	3.99	NA	NA	NA	NA	NA	NA
Jade	15.7	3.96 x 3.96	3.93	NA	NA	NA	NA	NA	5



TAJ FATEH PRAKASH PALACE  
UDAIPUR

---

The City Palace Complex, Lake, City Palace Rd, near Zenana Mahal,  
Old City, Pichola, Udaipur, Rajasthan 313004 • T: 0294 262 8800