



TAJ
MAHAL
NEW DELHI



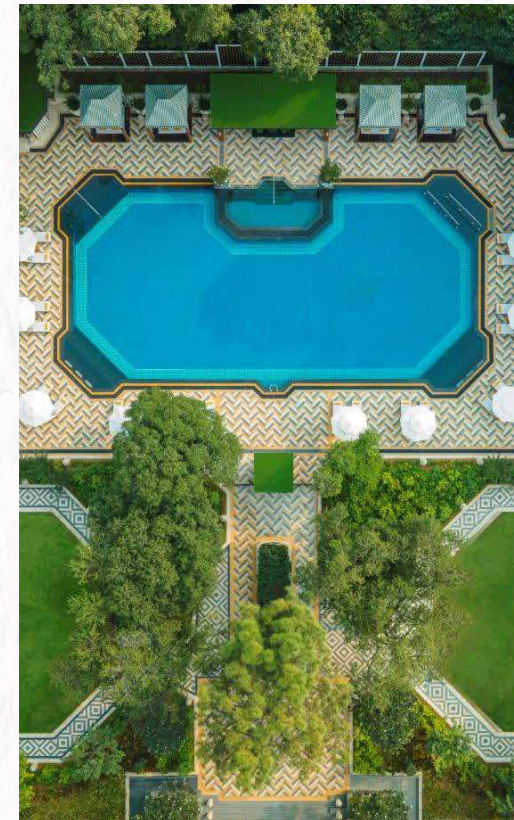
DELHI'S ICONIC LANDMARK. YESTERDAY, TODAY, FOREVER.



INTRODUCTION

Located in Lutyen's Delhi – the heart of the capital city – Taj Mahal, New Delhi is an iconic landmark that continues to be the preferred address for visiting Heads of State, business leaders and global travellers. Symbolising legacy, grace and nostalgia, the hotel has been an integral part of the historic, social and cultural fabric of the city for over four glorious decades.

Opening up to Delhi's historic skyline, Taj Mahal, New Delhi, in its new avatar features 213 rooms, suites and residences, award winning restaurants, elegant event spaces and the exalted business club – The Chambers.



DINING

MACHAN

Machan has been a defining part of the city's international culinary landscape since 1978. The re-imagined Machan presents a gastronomical confluence of the old and new with an eclectic assortment of food and beverage offerings and tasteful architecture. Its décor is based on Indian wildlife and the exquisite selection of à la carte dishes are inspired by forests from across the globe and India.

0700 hours to 0100 hours



HOUSE OF MING

A legendary dining destination for over four illustrious decades, the re-invented House of Ming brings you a specially curated repertoire of dishes inspired by history and culture. Here tradition meets contemporary Hunan, Sichuan and Cantonese cuisines that are celebrated in a harmonious ambience reminiscent of oriental architecture taking one on a culinary journey through time.

1230 hours to 1445 hours

1930 hours to 2345 hours





DINING

EMPEROR LOUNGE

Celebrated for its elegant ambience and its handpicked selection of afternoon tea and coffees from across the globe, Emperor Lounge has been at the centre of many business meetings and informal engagements as the city's preferred living room. The menu features a gourmet selection of savouries, desserts, cakes, handcrafted chocolates and gelatos. Patrons can also shop for bespoke gift hampers or enjoy themed afternoon teas in a relaxed setting.

0900 hours to 2200 hours



VARQ

An award-winning modern Indian artistic gourmet dining destination, Varq is symbolic of culinary refinement and elegance. Offering immersive experiences that stay true to the concept of "Art on Plate", the menu at Varq features an eclectic mix of authentic recipes infused with modern dining sensibilities creatively incorporating new techniques, seasonal delights, organic produce and innovative pairings.

1230 hours to 1445 hours

1930 hours to 2345 hours

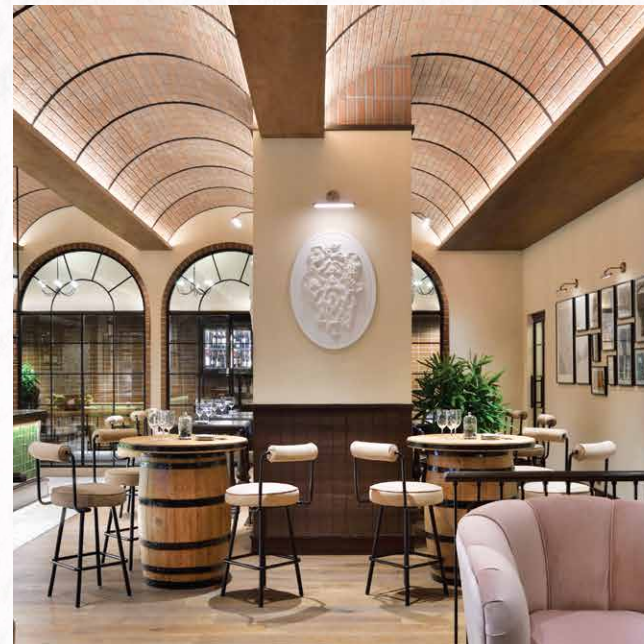
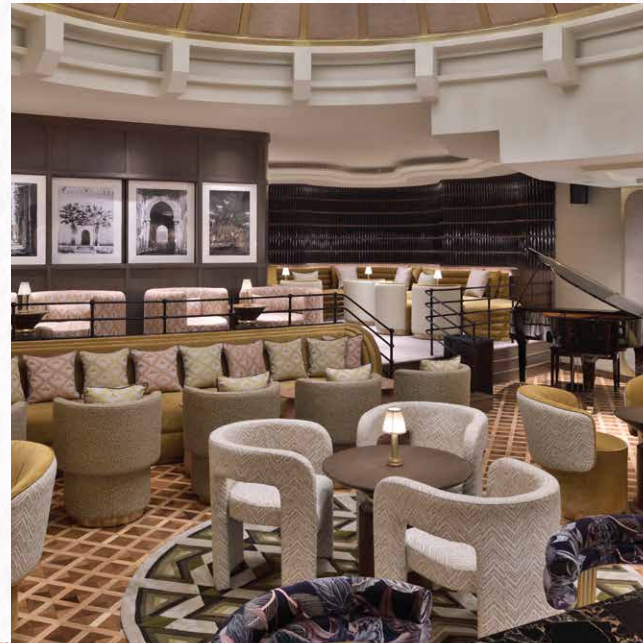


DINING

RICK'S

Delhi's much loved bar lounge reopens its doors to transport you into a new era of charm with an inspired collection of signature cocktails, celebrated classics and world cuisine amidst eclectic art and enlivening music.

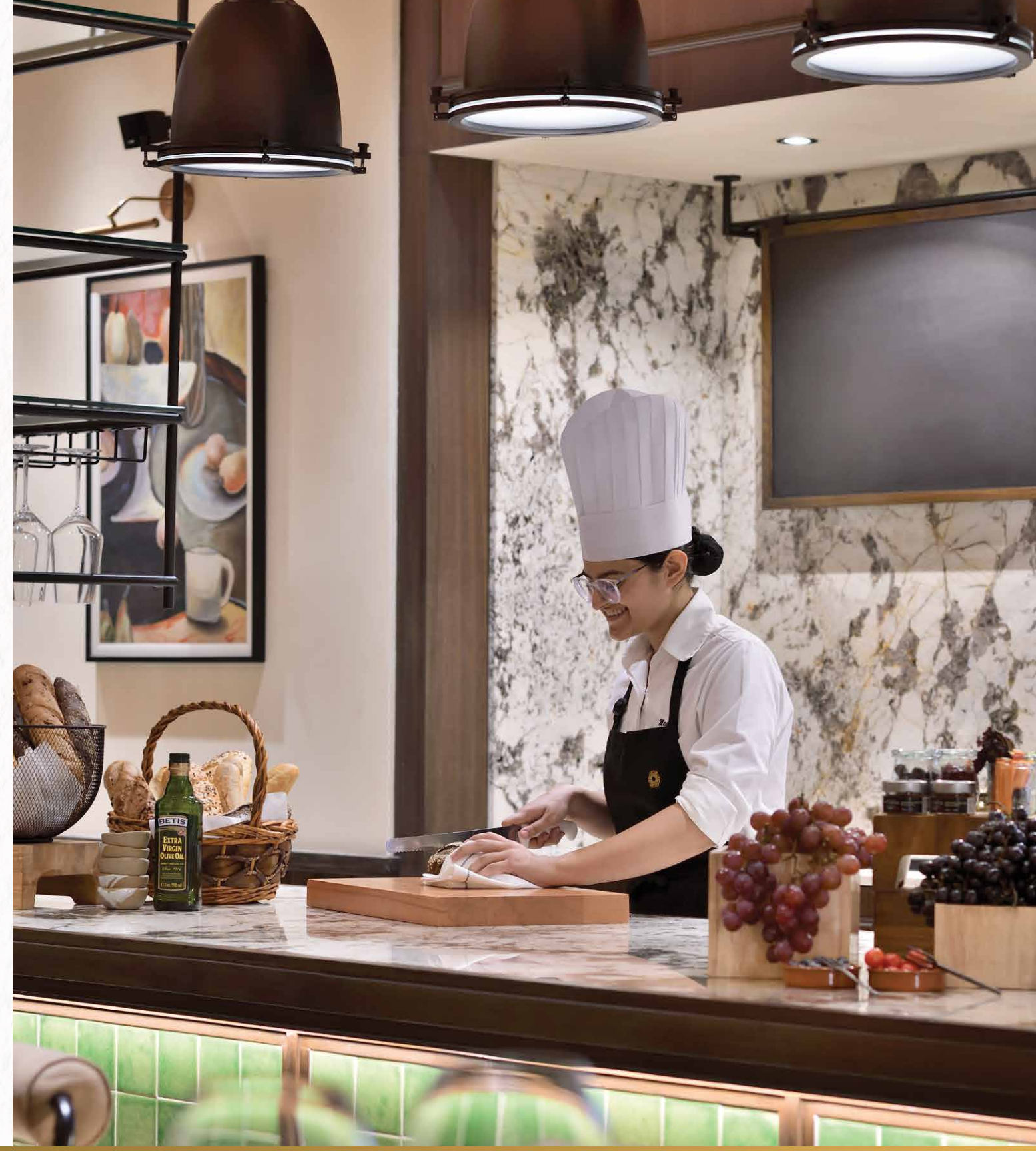
1600 hours to 0045 hours



CAPTAIN'S CELLAR

Cruise into our innovative wine lounge - a treasure trove of tastes and textures, flowing conversations and exceptional experiences. The spotlight is on 'the perfect pour' integrating the art and science of wine, small-plates, cheese and meat platters.

1300 hours to 0045 hours

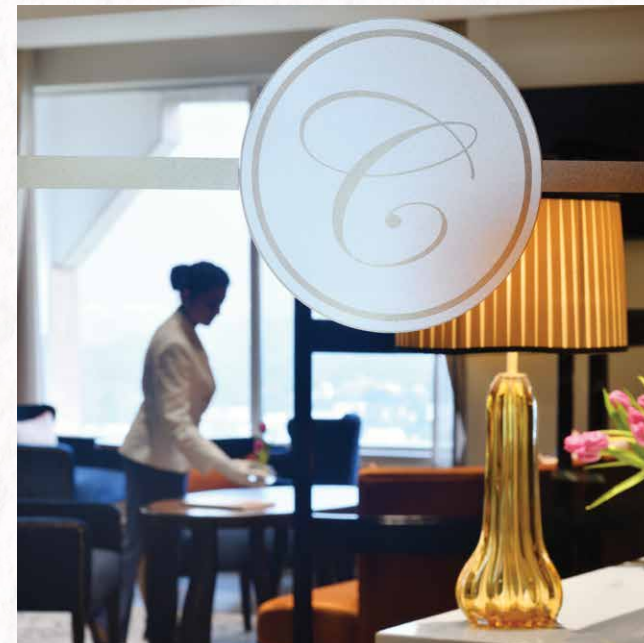




THE CHAMBERS

A GRAND LEGACY

With a legacy of over 40 years, The Chambers is India's very first exclusive business club for global achievers who have redefined horizons and scaled great heights. Strictly by invitation only, it enjoys an illustrious patronage of accomplished, acclaimed, achievers.



REIMAGINED REFINEMENT

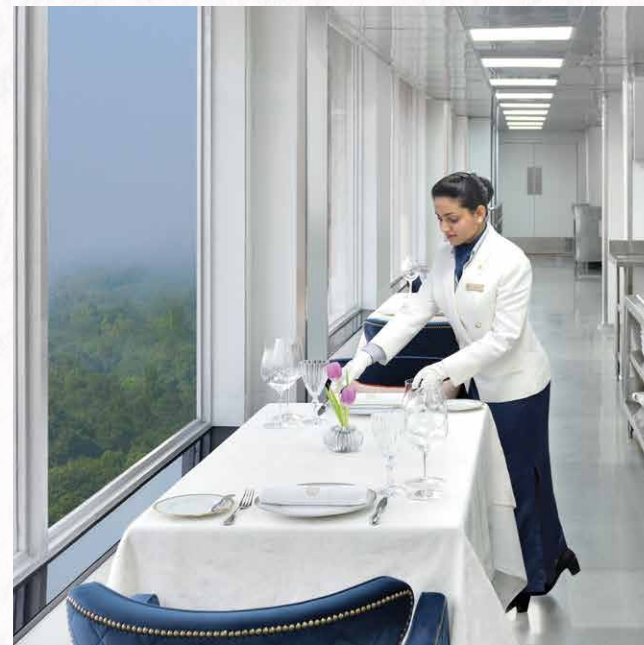
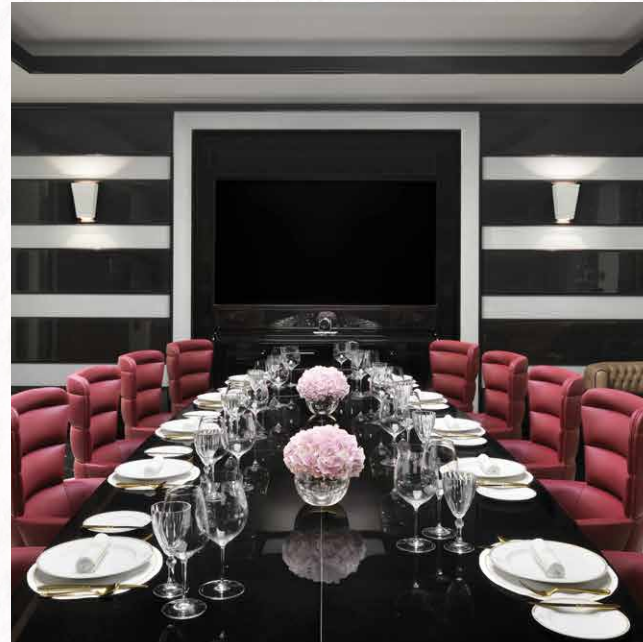
The redesign paired with the Taj's timeless legacy of exceptional service and exemplary warmth, has reinforced the status of The Chambers as a Mecca of indulgence and a lodestar of refinement.



THE CHAMBERS

INTIMATE INDULGENCES

The Chambers provides its members an exclusive haven to pursue business or simply unwind in indulgent spaces furnished with finesse and flavours inspired by world cuisine.



A LIFETIME OF PRIVILEGE

The Chambers offers members a lifetime of unfettered access to all its accompanying benefits, unparalleled privileges and complimentary services across Taj, SeleQtions and Vivanta hotels worldwide.





SIGNATURE SUITES

RAISINA SUITE

Experience unparalleled grandeur at our newly reimagined Grand Presidential Suite that blends classic comfort and contemporary design with world class amenities, inspired services and warm hospitality.



RAMBAGH SUITE

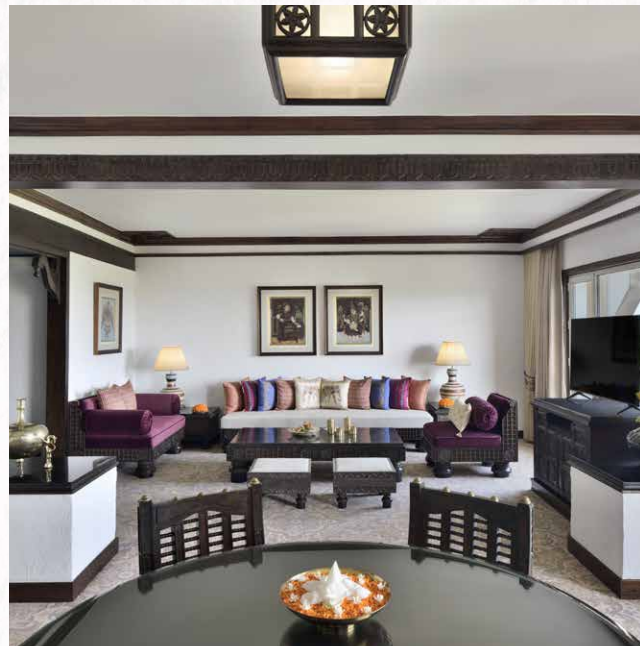
Steeped in heritage and palatial charm, the two-bedroom Rambagh Suite provides an unforgettable experience. Indulge in royal flourishes, opulent embellishments and majestic views of the Capital.



SIGNATURE SUITES

VERSAILLES SUITE

The Versailles suite offers a novel experience, inspired by the regalia of French art and creativity. Baroque style and luxurious living amidst delicate design and picturesque views graciously await you.



TANJORE SUITE

A glimpse of India's rich heritage, the Tanjore Suite is a symphony of artful living. Adorned with brass, silk furnishings and wooden carvings, old world glamour tastefully blends with an eclectic palette of design.

MAHARAJA SUITE

A glamorous ode to the pioneer of Indian aviation, celebrate regal luxuries with the pleasures of living life king size at The Maharaja Suite crafted for the contemporary world traveller.

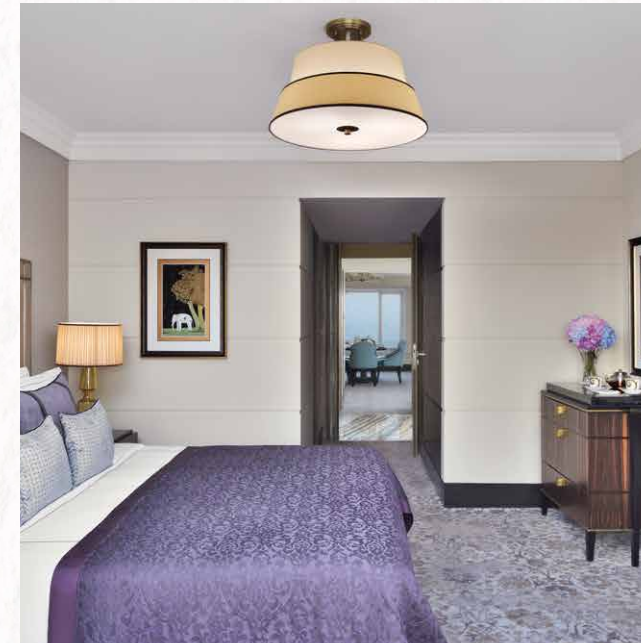




ACCOMMODATION

GRAND LUXURY SUITE

Grand Luxury Suites have a generously appointed bedroom, powder room, elegant and spacious living room and dining room with an adjoining pantry. Modern amenities, luxurious interiors and warm personalised services are a hallmark of these suites. The interiors use the royal shades of burgundy, white and gold.



LUXURY RESIDENCES

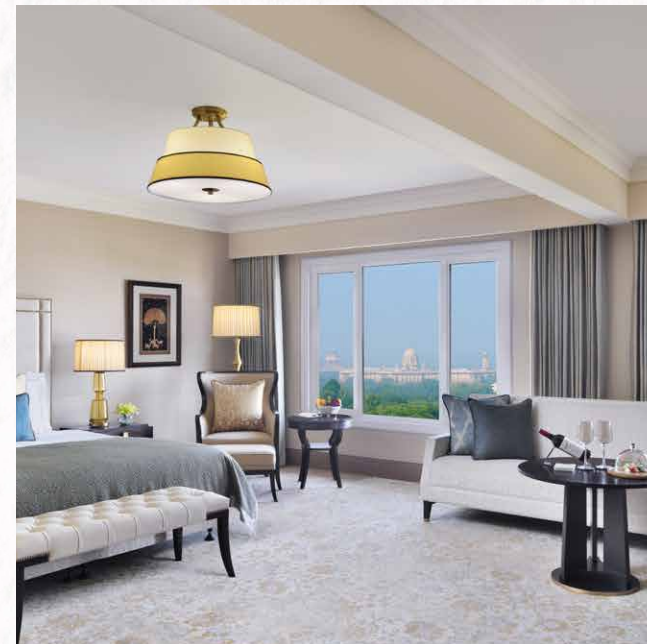
A novel offering in the heart of the city with luxurious living spaces and highly personalised services – the Luxury Residences at Taj Mahal, New Delhi boast of 27 beautifully designed one and two-bedroom residences. Featuring expansive living areas to relax and work in, these residences also comprise dining spaces, walk-in rain showers, spacious wardrobes, Italian marble writing desks and fully-equipped kitchens. The services offered as part of Luxury Residences include Taj's highly-acclaimed concierge, butler service, personalised and flexible food and beverage offerings, culinary consultants, dedicated room attendant and the Taj Club Lounge experience.



ACCOMMODATION

TAJ CLUB BALCONY SUITE

A luxurious and spacious suite with a separate living room, bedroom, powder room and an en-suite balcony. The Taj Club Balcony Suite offers a blend of stunning views and immersive experiences; themed with shades of gold and turquoise, the added element of an en-suite balcony allows one to enjoy enchanting views of Delhi.



TAJ CLUB SUITE

Newly designed suites exuding contemporary style and timeless elegance, with state-of-the-art purification technology. Delhi's historic skyline, combined with the luxury swimming pool or the Lutyens' Delhi, assure a delightful view from these rooms. Designed in shades of teal and gold, the Taj Club Suite offers a separate seating area or living room with an oak writing desk to let you cherish what you do.

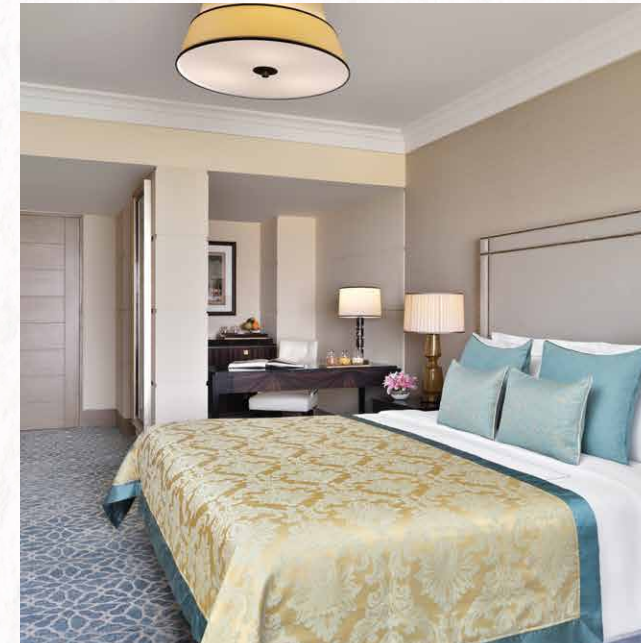




ACCOMMODATION

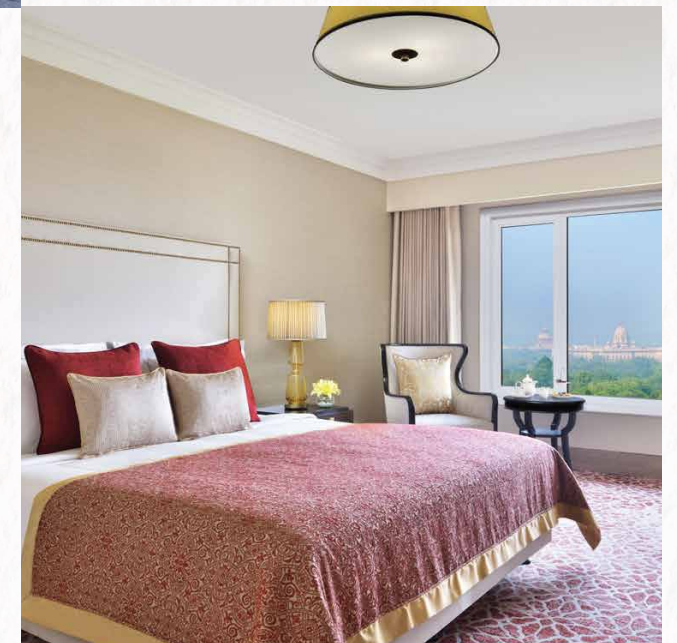
TAJ CLUB PREMIUM ROOM

Stunning views of Lutyens' Delhi, inspired service and an immersive experience – with the Taj Club Premium Room, we offer an exclusive insight into contemporary style and timeless elegance, curated just for you. Designed with warm hues of turquoise and gold, the décor encompasses bespoke lighting, jewels and gems and furniture selections for your comfort.



TAJ CLUB EXECUTIVE ROOM

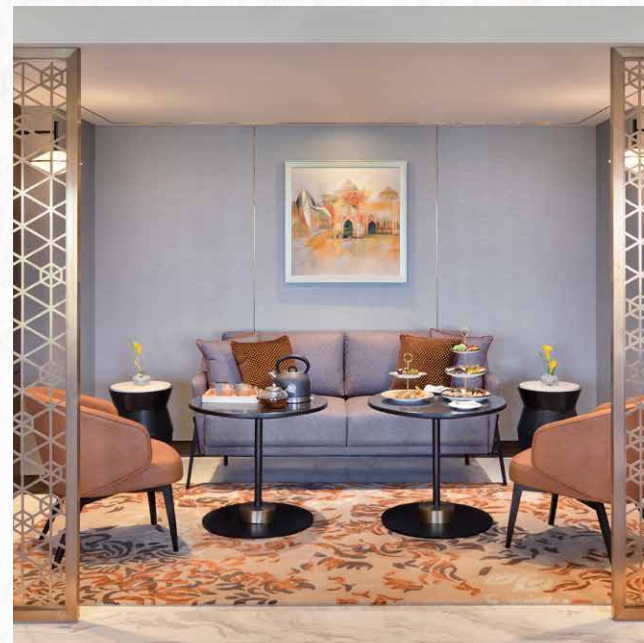
With state-of-the-art air purification technology, the Taj Club Executive Room boasts of bespoke, eco-friendly veneer furniture and custom-made carpets for your comfort and aesthetics. These plush rooms offer breakfast at the Taj Club Lounge, access to the meeting room, cocktail hours, butler service, one way airport transfer and a host of amenities.



TAJ CLUB LOUNGE

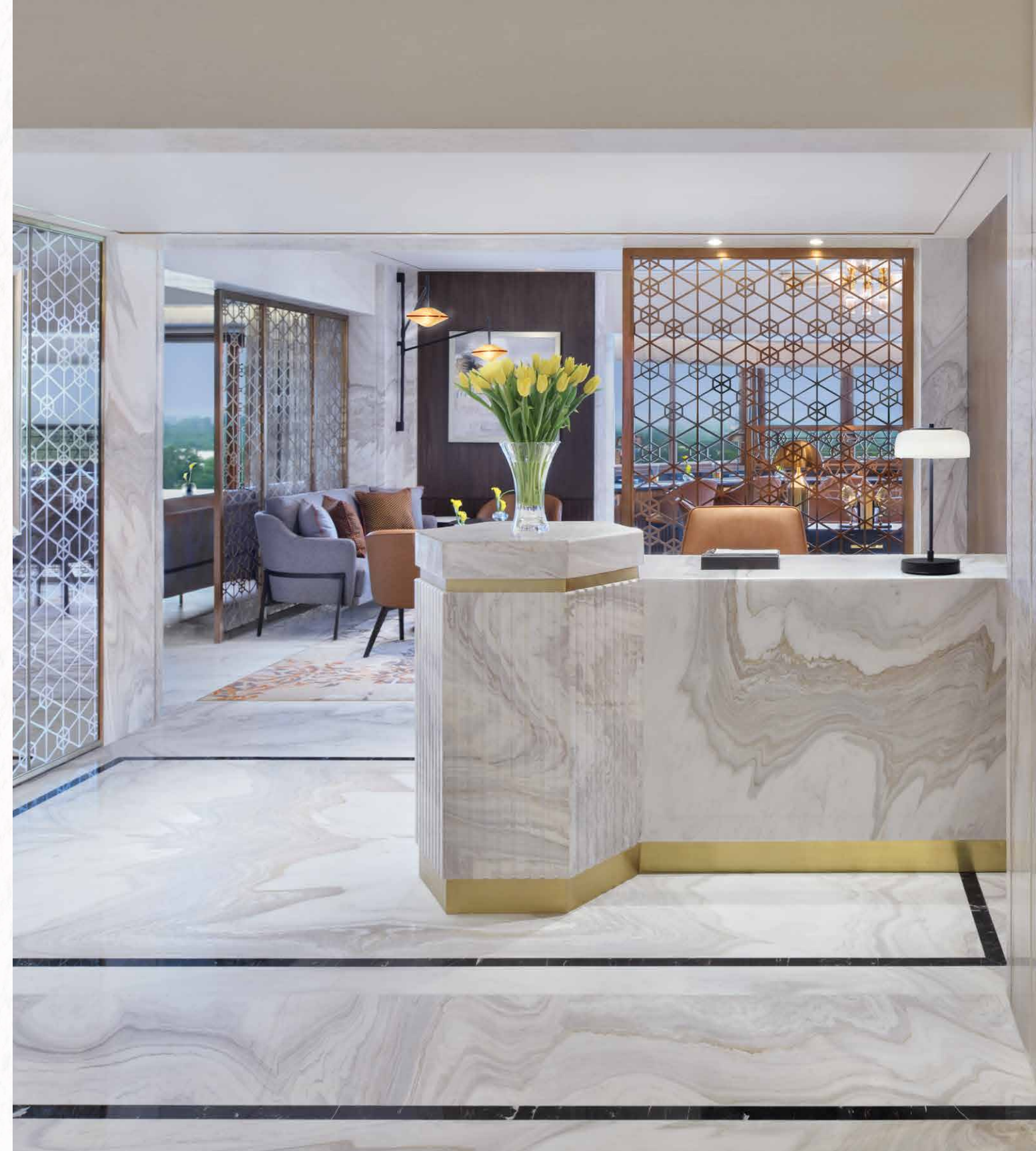
UNMATCHED INDULGENCE

Indulge in an exceptional experience in the heart of the city at the newly reimagined Taj Club Lounge at Taj Mahal, New Delhi, where personalised services, world-class amenities and stunning views await you.



DISTINCTIVE LUXURY

Exquisitely designed and spacious, the perfect host for business appointments and social engagements alike.

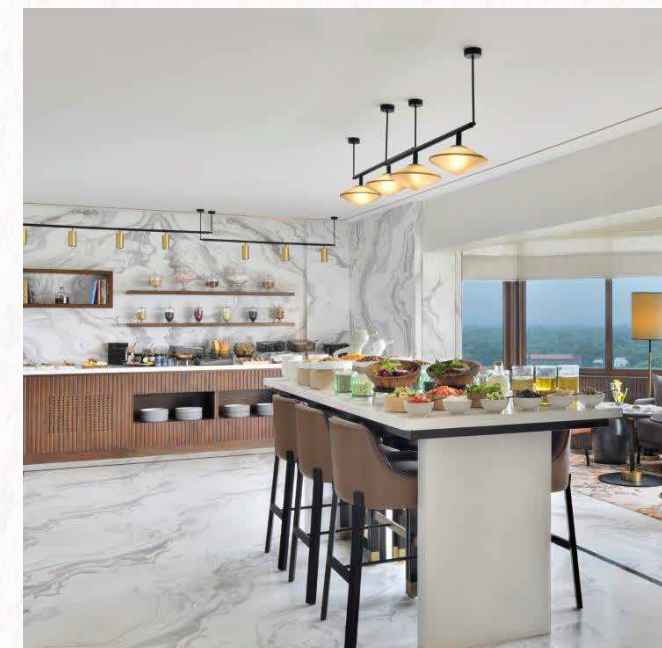




TAJ CLUB LOUNGE

BESPOKE SERVICES

From dedicated butler assistance to innovative culinary offerings, services imagined for ultra-luxe, personalised comfort.



EXPERIENCES & AMENITIES

Thoughtfully curated and presented with our signature finesse, experiences that are suited to modern-day networking needs, and amenities that carry the edge of technology.



MEET & CELEBRATE

MANSINGH I

With plenty of natural light and breath-taking views of the lush green outdoors, Mansingh I, the largest banqueting hall of its kind, is an idyllic option for a range of occasions. From daytime conferences to formal sit-down dinners, this hall is an elegant combination of sophisticated contemporary design with superior convenience and comfort. Interconnected with Mansingh II and Aftab-Mahtab and access to The Poolside Lawns, makes it ideal for larger gatherings.



MANSINGH II

A contemporary venue that is beautifully appointed and makes for an ideal space for intimate gatherings. Mansingh II connects seamlessly with its adjacent venues Mansingh I and Aftab-Mahtab and provides enhanced space and comfort.





MEET & CELEBRATE

AFTAB-MAHTAB

Exudes an air of sophistication, seamlessly combining classic elegance with contemporary flair, this venue boasts two entrances named after the Persian words for "sun" and "moon," and is an ideal option for an array of celebrations. Aftab-Mahtab offers versatility and adaptability for any occasion as it comes with a dedicated pre-function area and interconnects Mansingh II providing added flexibility for larger gatherings. It also offers a partition thereby offering two distinct meeting spaces.



LONGCHAMP

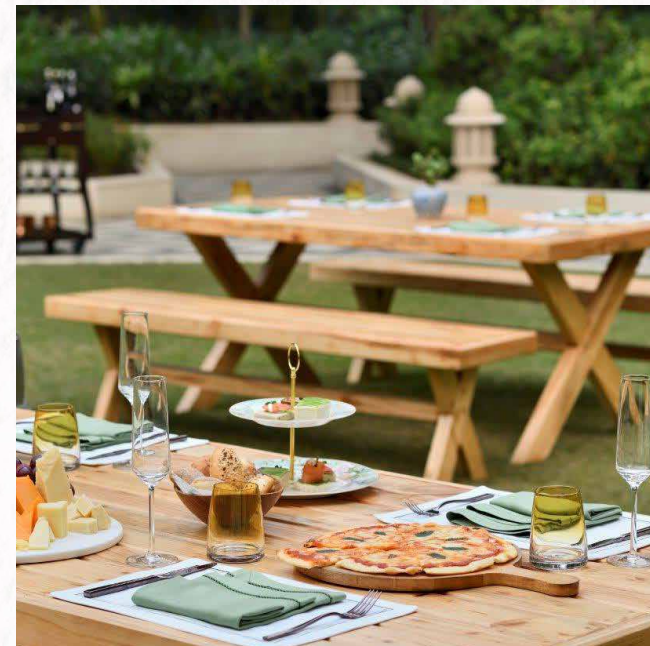
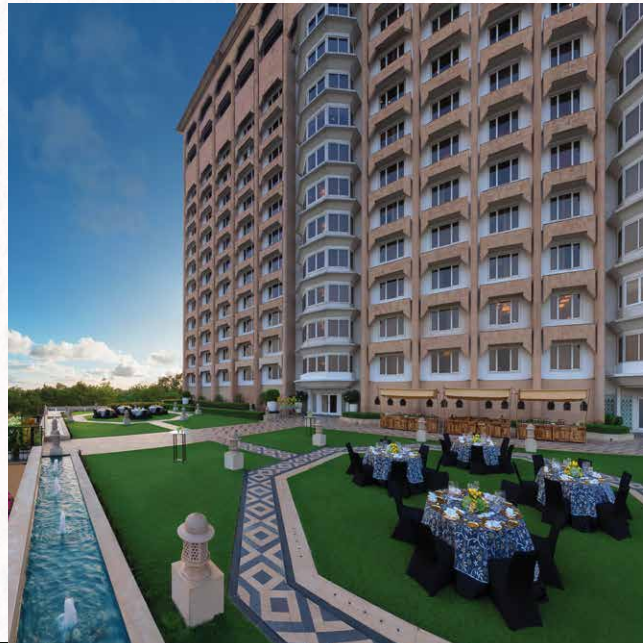
Longchamp derives its name from a 19th century French palace and matches its grandeur and resplendence. An elegant and premium venue that boasts of natural light during the day and offers an incomparable starlit experience at night. Longchamp offers a majestic view of Lutyens' Delhi – a novel highlight for your grand celebrations.



MEET & CELEBRATE

TERRACE GARDEN

The Terrace Garden is an exquisitely striking outdoor venue for pre-wedding celebrations and grand receptions with a view of the serene pool waters and the heart of Lutyens' Delhi. Located one level above the lobby, The Terrace Garden offers breathtaking views of the lush green environs and the setting sun. The venue offers a sophisticated and spacious garden arrangement set amidst the backdrop of the hotel's majestic façade.



THE POOLSIDE LAWNS

Set amidst beautiful landscapes, The Poolside Lawns offer an ideal venue for lunches, sundowners and large gatherings. Particularly for weddings, the Poolside Lawns at Taj Mahal, New Delhi boast of abundant, timeless magnificence and warmth. With our stellar staff and an accomplished culinary team deeply dedicated to making each event a success, every special occasion at Taj is transformed into a celebration of a lifetime.

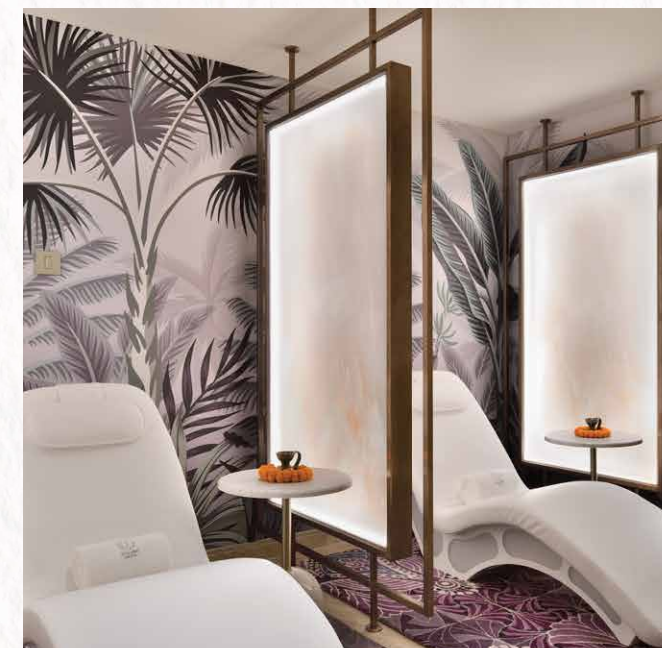




WORLD OF WELLNESS

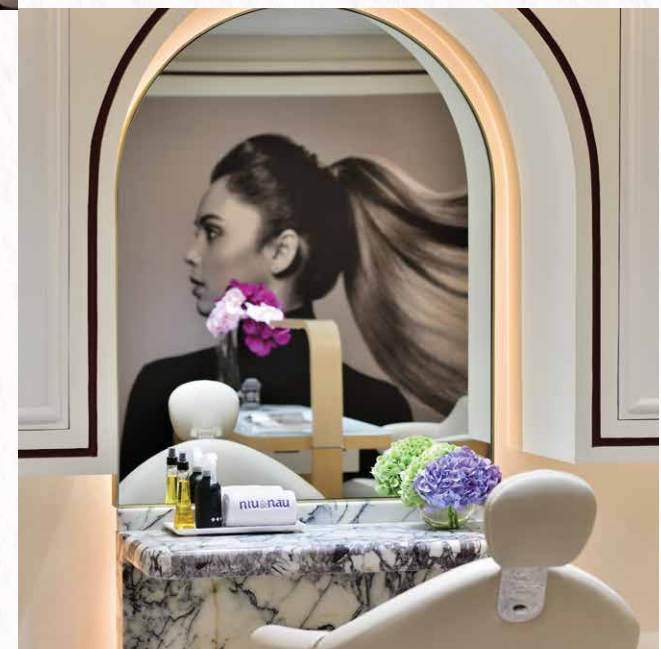
J WELLNESS CIRCLE

Feel at one with yourself and the universe at your preferred urban retreat - a sanctum of ayurvedic principles and elevated luxuries. Immerse yourself in time-honored Indian treatments and yoga services, that promise to align your mind, body and soul.



NIU&NAU

Pamper yourself at the re-imagined Salon with a full regimen of modern services spanning from hair, beauty and skincare, amidst a vibrant ambience that promises to be the perfect beauty spot to unwind with yourself and your friends.



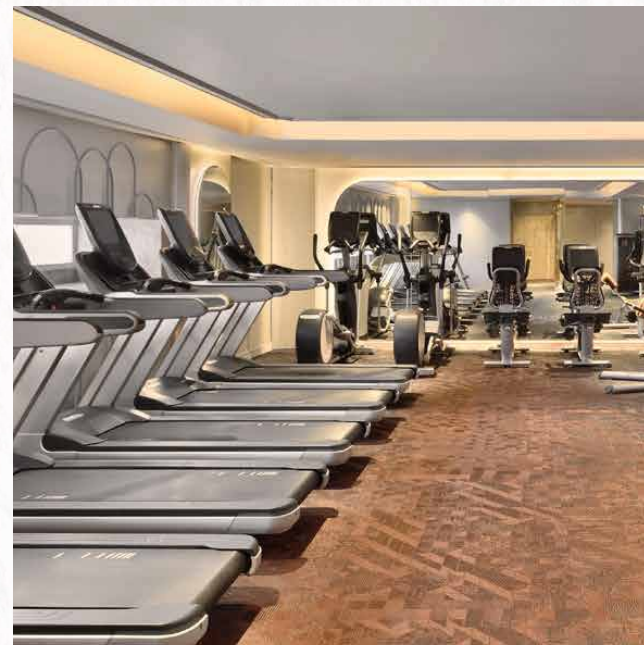
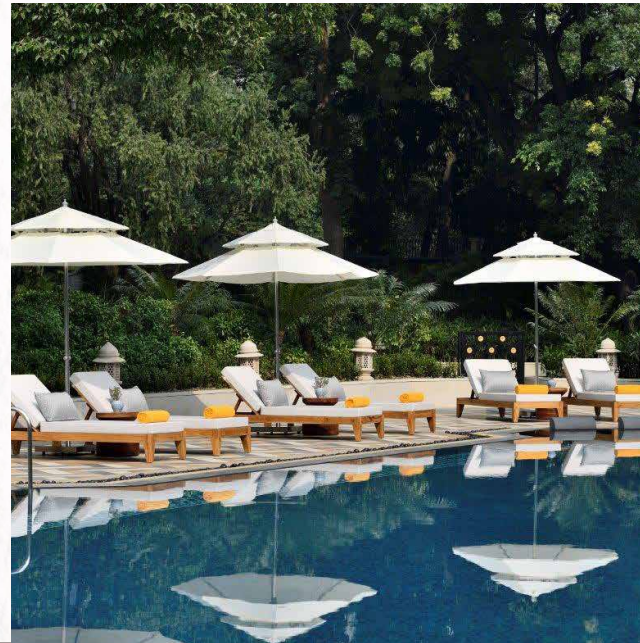
EXPERIENCES

SWIMMING POOL

Accessible from the lower lobby our open-air luxurious swimming pool is temperature controlled for the entire year and offers an inbuilt jacuzzi for complete relaxation.

Summer: 0630 hours to 2100 hours

Winter: 0700 hours to 2000 hours

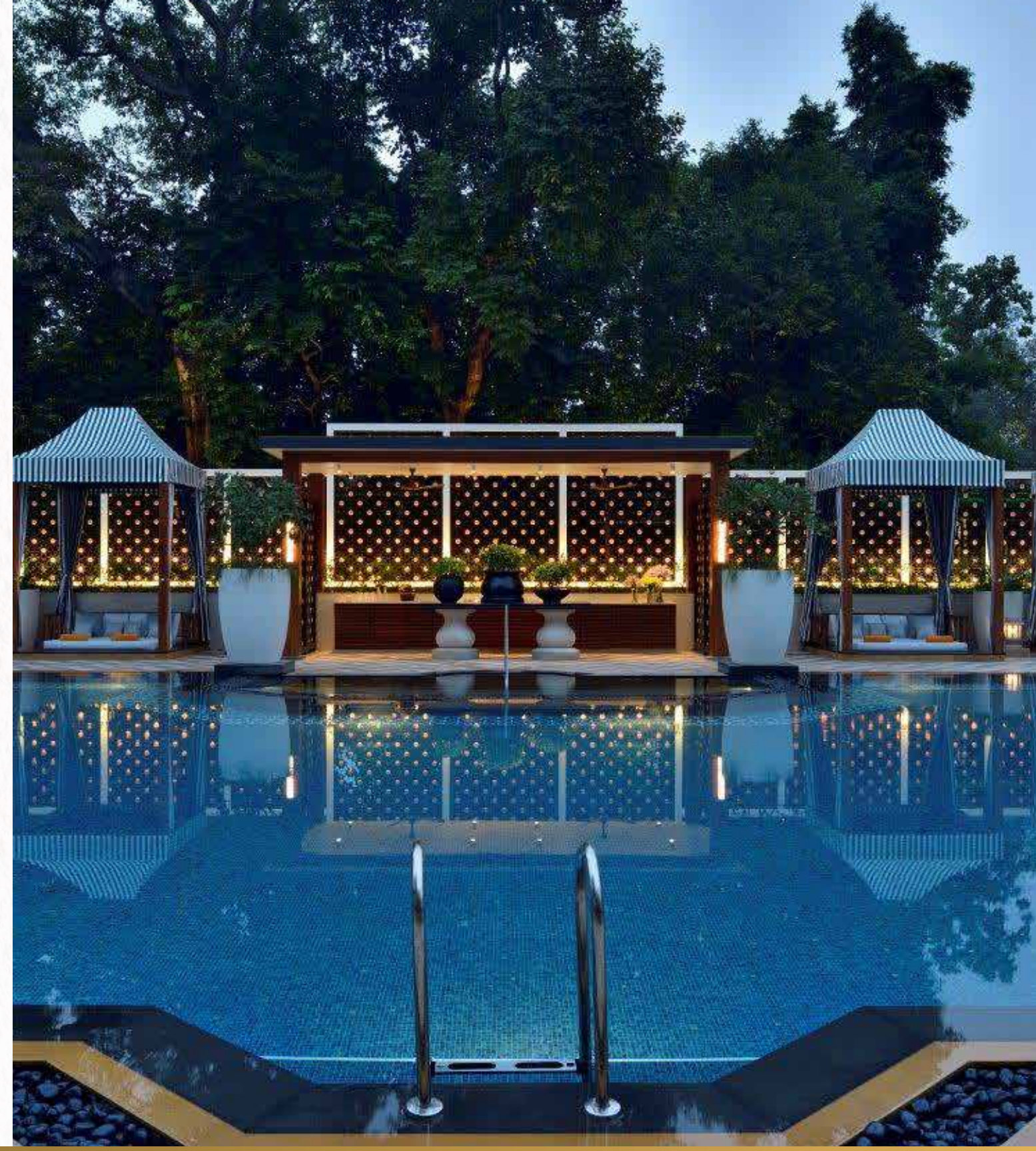


FITNESS & YOGA

The fitness centre is a state-of-the-art training and workout haven featuring strength workout stations, free weights sections, a studio section and much more. Also avail access to sessions with professional yoga instructors that guide you through a holistic integration of physical, psychological and spiritual dimensions equally.

Gym: 0630 hours to 2100 hours

Yoga: By appointment only





EXPERIENCES

DINING EXPERIENCES

Enjoy an array of dining experiences such as afternoon tea By The Garden, wine and cheese evenings at The Poolside Lounge, a spirited sundowner at the Varq Veranda and curated demonstrations by our culinary experts such as Cooking Up A Tale, Biryani Making & Mixology Masterclasses, exclusively for you.



DESTINATION EXPERIENCE

Discover the cultural and historical wonders of Delhi, including a heritage walk at Humayun's Tomb with history scholars, a customised Rickshaw ride to experience the charms of landmark locations and an opportunity to be part of an old age and celebrated military tradition - The Change of Guard Ceremony.



EXPERIENCES

FACILITIES

For the convenience and comfort for our guests, Taj Mahal, New Delhi offers a wide range of luxurious facilities that promise to make every experience special.



- Business Centre
- Butler Service
- Concierge
- Salon
- Laundry
- Travel Desk
- Doctor
- Baby Sitting
- Pillow Menu
- State -of-the-art air purification technology
- Shopping





INDIA'S STRONGEST BRAND
ACROSS SECTORS

2023 • 2022 • 2020

Brand Finance®

Number One, Mansingh Road,
New Delhi, Delhi 110011