



51 BUCKINGHAM GATE
SUITES AND RESIDENCES
LONDON



WHERE TIMELESS EXPERIENCES MEET UNMATCHED HOSPITALITY



INTRODUCTION

Described as London's 'inner sanctum', Taj 51 Buckingham Gate was once home to the members of the Royal Court. The hotel offers beautifully designed suites and residences featuring between one and six bedrooms, each including expansive living areas and fully equipped kitchens. Residents also enjoy access to our celebrated restaurants, in-suite dining and wellness facilities. Stays are tailored to perfection by Taj's acclaimed butler service and Golden Keys concierges tending to all personal requirements. Residents also may play host to social gatherings, milestone celebrations and/ or meetings alike through the hotel's versatile banquet facilities or simply unwind in unique tranquility in our incandescent courtyard.



DINING

ST. JAMES' COURTYARD

From the minute you step into the tranquil St James' Courtyard, every memory of fast-paced London melts away. An ornate Victorian fountain plays in a quadrangle of porches and pillars that glitter with a sea-green faience glaze. Linking the eight townhouses that surround this court is an endless frieze of figures - carved from the bricks that dance right round the quad - reputedly the longest Shakespearean sylvan frieze in the world. It makes a perfect backdrop for al fresco meals and drinks in the summer.



KONA

A haven from the hustle and bustle of London, Kona is a place to indulge in a sophisticated dining experience in a luxurious yet laid-back ambience. Most famous for its creative take on afternoon teas, Kona is also a popular venue for exclusive private dining in the evenings.

With two themed afternoon teas: A Midsummer Night's Dream afternoon tea and Indian Jasmine afternoon tea, to choose from you will be spoilt for choice.





DINING

HOUSE OF MING

With novel and familiar flavours, an inspired design, and sincere, warm service for a sophisticated and contemporary dining experience, House of Ming is set to offer diners in London an unforgettable experience inspired by Sichuan and Cantonese cuisine. From the kitchens of ancient China to London comes the legendary journey of Ming cuisine. A journey that imparted culture, cuisine, and the intricacies of the Ming dynasty across the ever-expanding trade routes. Paired with the iconic hospitality of the Taj, the House of Ming bring rich culture, history and most importantly, cuisine from across China to the shores of London.



TH@51

TH@51 is a stylish restaurant that welcomes communities of food lovers to pique their palates. The modern eatery is perfect for relaxing with friends and relishing in great conversation from day to night. The menu draws inspiration from flavours around the world, exploring the unexplored to create a food and drink experience that excites all senses. Our signature dishes are truly unique, pairing popular flavours from around the globe together to spark curiosity.



DINING

QUILON

Quilon is the first South Indian restaurant in the world to win a Michelin star, which it has retained since 2008. Chef Sriram's fine dining menu embodies a unique blend of south-west coastal dishes, mostly designed for sharing. Whilst seafood is at the heart of this establishment, the menu is heralded for its progressive interpretation of ethnic game, poultry and vegetarian dishes, showcasing the region's cultural diversity as well as the award-winning wine and beer lists.



BOMBAY BRASSERIE

Bombay Brasserie specializes in the spectrum of flavors, fragrances, and textures that epitomize Mumbai's diverse and inspirational cuisine, complemented by classic Indian recipes from around the sub-continent.





ACCOMMODATION

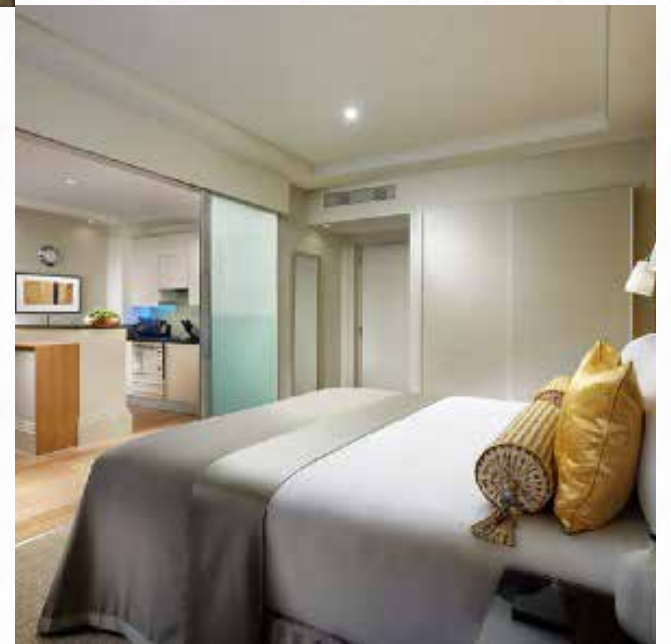
KINGS JUNIOR SUITE

At 40 sq. mt., these urban chic suites feature a king-size or twin bedroom, luxurious bathroom and a fully-equipped kitchen with dining area - ideal for guests looking for a comfortable and stylish stay in London.



KINGS DELUXE JUNIOR SUITE

At 40 sq. mt., these contemporary suites feature a luxurious kingsize bedroom with en-suite bathroom, spacious living area and a fully-stocked kitchen. Ample working space and complimentary wifi provide the perfect setting for jet-setting business executives, especially when combined with a personalised gym session or a spa treatment from Jiva.



ACCOMMODATION

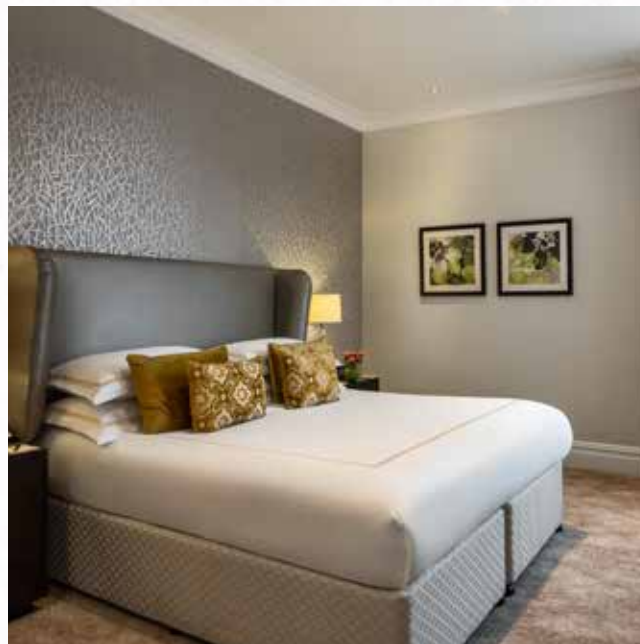
KINGS ONE BEDROOM SUITE

At 60 sq. mt., these contemporary suites feature a king-size or twin bedroom with an en-suite shower room, living room and a spacious fully-equipped kitchen with dining table — everything required for a memorable stay. Sit back, relax and let the finest personal attention in London take care of your every need.



FALCONERS ONE BEDROOM SUITE

At 64 sq. mt., these homely suites feature a contemporary king bedroom, stylish bathroom, separate living room and fullyequipped kitchen. Ample working space and complimentary wifi provide the perfect setting for jet-setting business executives, especially when combined with a personalised gym session or a spa treatment from Jiva.





ACCOMMODATION

MINSTERS ONE BEDROOM SUITE

At 65 sq. mt., these homely suites feature a contemporary king bedroom, stylish bathroom, separate spacious living room and fully-equipped kitchen. The seasonal in-room dining menu, great movie selection and extensive mini-bar offering make the perfect end to a busy working day.



KINGS DELUXE ONE BEDROOM SUITE

At 80 sq. mt., these urban chic suites feature a king-size bedroom with en-suite bathroom, spacious living room with dining table and a fully-equipped kitchen. Ideal for corporate executives. The seasonal in-room dining menu, great movie selection and extensive mini-bar offering make the perfect end to a busy working day.



ACCOMMODATION

MINSTERS DELUXE ONE BEDROOM SUITE

At 65 sq. mt., these gorgeous suites are chic and contemporary, featuring a plush king-size bedroom, lavish bathroom and a fully equipped Kitchen - everything required for a memorable stay. Sit back, relax and let the finest personal attention in London



FALCONERS TWO BEDROOM SUITE

At 75 sq. mt., these large suites feature two luxurious and spacious bedrooms with king and twin beds, separate bathrooms for each bedroom, a fully equipped kitchen and a family living area. They are ideal for families travelling with children.





ACCOMMODATION

MINSTERS DELUXE TWO BEDROOM SUITE

At 74 sq. mt., these large contemporary suites feature two spacious bedrooms with king and twin beds, each with its own luxurious bathroom; fully-stocked open plan kitchen and a beautiful living room. Ideal for a girls' weekends away, indulging on Michelin-star dining, luxury spa pampering and the finest personal attention in London.



KINGS DELUXE THREE BEDROOM SUITE

These large suites offer 140 sq. mt.. of luxury, spread across three bedrooms with king size beds or twin beds, three stylish bathrooms, separate spacious living room area and a fullyequipped kitchen with dining table. Ideal for family re-unions or multi-generational trips. The kids' selection in the mini-bar and inroom dining menus will ensure everyone is enjoying the muchneeded family time, especially when London's most famous musicals are only a 5-min walk away.



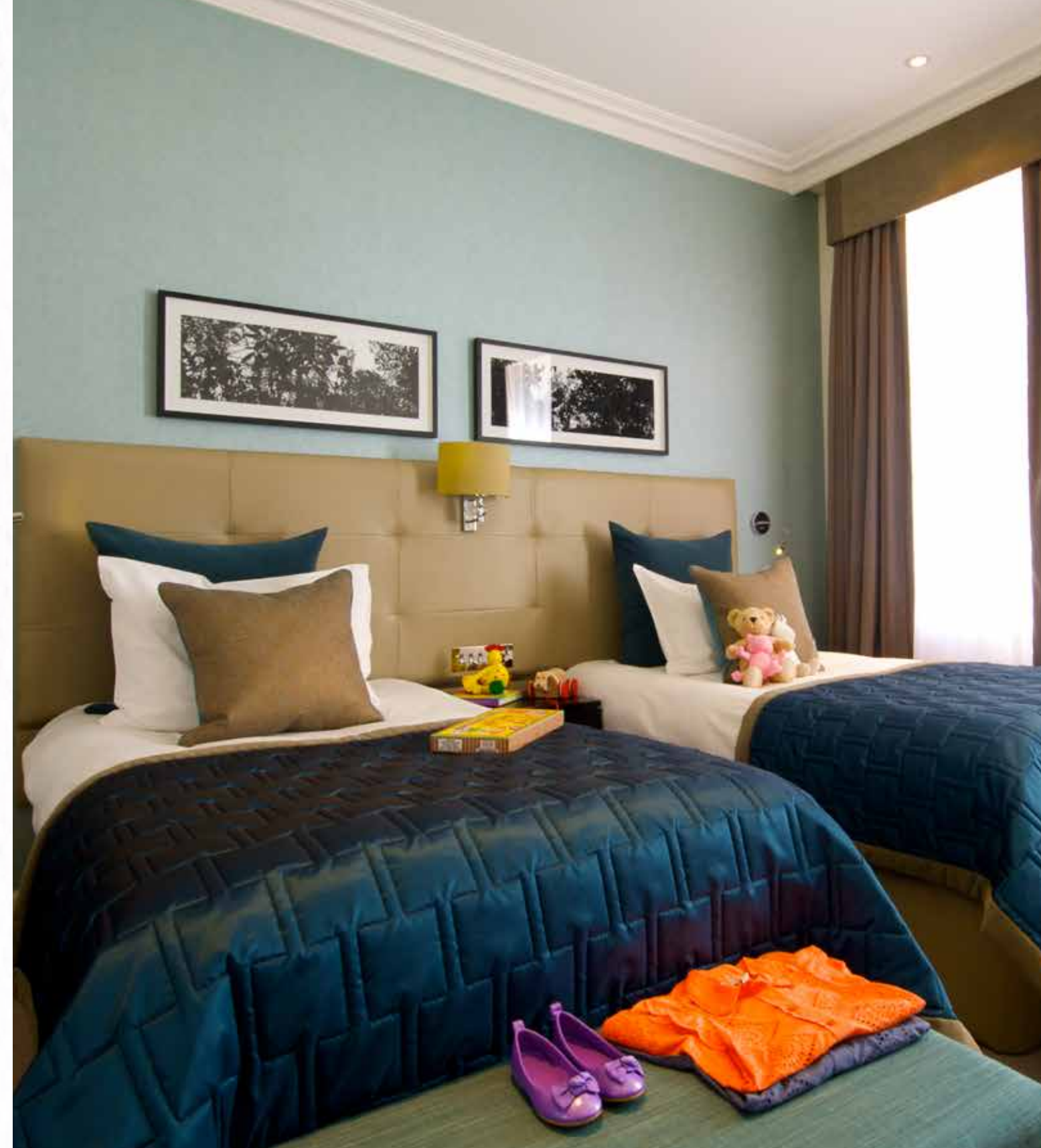
ACCOMMODATION

MINSTERS DELUXE THREE BEDROOM SUITE

These chic and contemporary suites feature 167 sq. mt. of luxury, spread over three stylish bedrooms with king and twin beds, three lavish bathrooms, separate living room, dining room and fullyequipped kitchen. Ideal for family re-unions or multi-generational trips.



The kids' selection in the mini-bar and in-room dining menus will ensure everyone is enjoying the much-needed family time, especially when London's most famous musicals are only a 5-min walk away.





SIGNATURE SUITES

JAGUAR SUITE

At 175 sq. mt. and designed by Jaguar's Design Director Ian Callum, the Jaguar Suite is one of its kind. The sleek design of this 1,832 square foot, two-bedroom suite with king-size beds alludes to both classic and contemporary Jaguar models, from the legendary 1960's E-type to the state-of-the art C-X75. This unique Jaguar experience starts subtly at the door, with sleek wood panelling greeting guests on arrival and Jaguar damask lining the bedroom walls.



Intriguing design features are evident throughout, from the minimalistic clean-fuel fireplace referencing the shape of the brand's hallmark rear window, to the finest leather that lines the cars, ebony veneer doors and custom-made Jaguar wallpaper. The spacious yet homely living room with a courtyard-facing balcony has one wall covered in Italian leather, embedded with a 42 inch television and offers Denon and Creston superior sound systems and Sonance ceiling speakers.



SIGNATURE SUITES

PRESIDENTIAL THREE BEDROOM SUITE

The Presidential Residence occupies a whole floor with one, two and three-bedroom Presidential Suites, which can be interconnected to create an opulent and contemporary six-bedroom residence. The floor features a private doorway, leading to a spacious hall with three separate entrances into each suite. The Presidential Residence is 167 sq. mt.



The first suite is 1,797 sq. ft. in size, consisting of three double bedrooms each with an en-suite bathroom, a very spacious sitting room, separate dining room and a fully equipped kitchen. This section of the suite also has views overlooking our beautiful award-winning courtyard. The second suite is 796 square feet in size, consisting of two bedrooms, one with a king-size bed and an en-suite bathroom; one with twin beds and a separate bathroom, plus a spacious sitting room and a fully equipped kitchen. The third suite 699 square feet, consists of one king-size bedroom, a sitting room, a fully equipped kitchen and a bathroom.





SIGNATURE SUITES

CINEMA SUITE

At 175 sq. mt. and created by the acclaimed Indian designer Sabyasachi Mukherjee in celebration of world cinema, this unique two-bedroom suite comes with king-size beds, a dining room, study, powder room and kitchen. The inspiration behind the design is most notably by the era of 1940s and 1950s Hollywood and Indian Cinema. Guests will find reference to masters like Ray, Coppola and Bergman in the imposing study, world cinema leaders like Majidi, Wong Kar-Wai and Almodovar amongst the cultured kitch of the living room and echoes of The Stepford Wives in the kitchen.



One bedroom is reminiscent of the golden Hollywood era of Rita Hayworth and Marilyn Monroe, whilst the other draws on colonial inspiration and renowned Indian artists Guru Dutt, Merchant Ivory and Bimal Roy. The suite is a celebration of personalized detail and global culture. Visitors will marvel at breathtakingly rare Bollywood film prints, remarkable history books, vintage mirrors and a myriad of portraits and drawings.



MEETINGS & CONFERENCES

CELLAR ROOM

Ideal for intimate gatherings and social events.

KONA

The space and facilities of this venue make it fit for small private gathering. Combine with Kona for a larger space.

QUILON

Nestled in the Michelin-starred Quilon is an intimate dining room, perfect for a small celebration or a post-meeting meal.



EXECUTIVE BOARDROOM

This elegant room incorporates the latest technology to ensure you have seamless meetings.

GEORGE V

This state of the art meeting room is built to be the ideal location for your meetings.

DIRECTOR'S BOARDROOM

This elegant room incorporates the latest technology to ensure you have seamless meetings.



MEETINGS & CONFERENCES

ST. JAMES' COURTYARD

The award-winning courtyard is the most exquisite quintessentially British venue for a party or a quiet dinner with a select few.

BUCKINGHAM

With distinctive and classy interiors, this room is designed for smaller receptions, meetings and banquets. The room can be divided in to two.

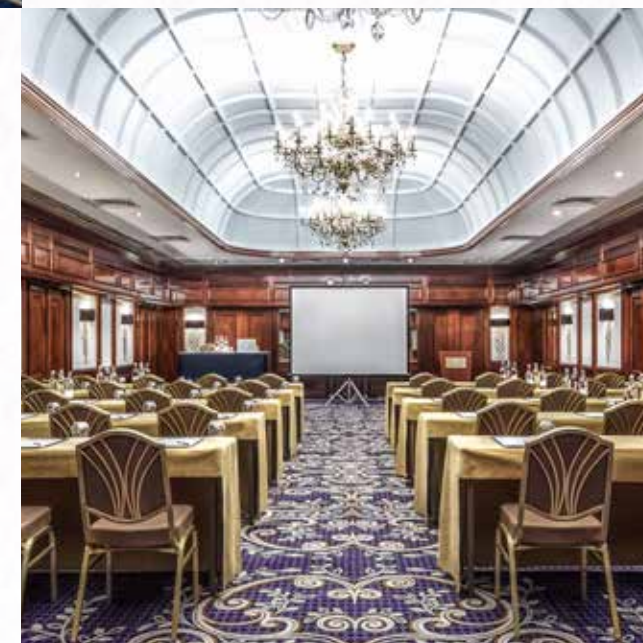


EDWARDIAN I

With distinctive turn-of-the-century styling combined with modern facilities, this venue is perfect for large meetings and social events. Interconnect with Edwardian II for a larger space.

EDWARD VIII

Adaptable to suit your needs, Edward VIII can function efficiently for conferences, seminars and more with ease.



MEETINGS & CONFERENCES

TAJ ROOM

This long and naturally lit meeting space consists of two large interconnecting rooms. Perfect for gatherings that require two separate areas.

ELIZABETH II

The space and facilities of this venue make it fit for small private gathering. Combine with Elizabeth II for a larger space.

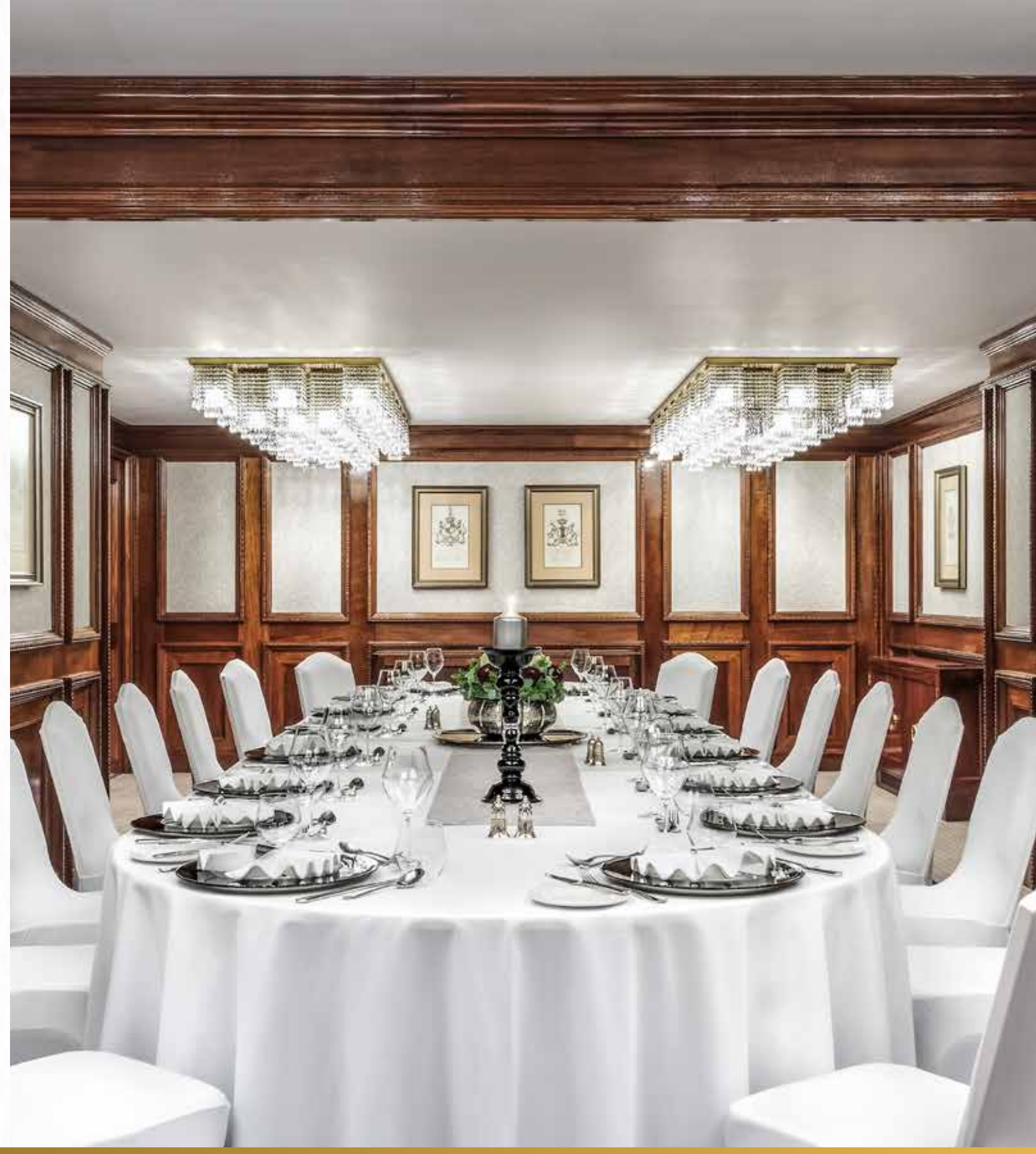


GEORGE VI

Versatile and fully equipped, George VI is ideal for board meetings, business meetings and even small conferences.

EDWARDIAN II

The space and facilities of this venue make it fit for small private gathering. Combine with Edwardian I for a larger space.





EXPERIENCES

J WELLNESS CIRCLE

J Wellness Circle, the first in Europe, is an exclusive space offering the perfect amalgamation that will heal the mind, body and spirit through our exhilarating spa experience. A unique fusion of Indian wellness philosophy and luxury British innovation.

Open to both hotel guests and locals, the spa offers a unique concept born out of a collaboration between Taj's award-winning J Wellness Circle and the British lifestyle brand Temple Spa.



This exciting partnership is a mélange of J Wellness Circle traditional Indian treatments dedicated to nurturing the body, complemented by Temple Spa's contemporary Mediterranean wellness philosophy and results driven products.

Spa facilities include two single treatment rooms, one couple suite, vitality bathing area, steam sauna and open shower, a relaxation area, and separate changing rooms for men and women. Robes, towels, slippers, and personal amenities are provided.

The fitness centre offers a range of Technogym equipment for a full body workout. The facilities include free weights area and a number of cardio machines





51 BUCKINGHAM GATE
SUITES AND RESIDENCES
LONDON

51 BUCKINGHAM GATE SUITES AND RESIDENCES, LONDON, SW1E 6AF, UNITED KINGDOM
PHONE: +44 20 7769 7766 | EMAIL: INFO.LONDON@TAJHOTELS.COM
WWW.TAJHOTELS.COM