

A photograph of the Taj Aravali Resort & Spa in Udaipur at dusk. The resort's modern architecture, featuring large glass windows and a prominent white pillar, is illuminated from within. In the foreground, a large, multi-level swimming pool with blue lighting is surrounded by lush greenery and trees. The sky is a soft twilight blue.

TAJ  
ARAVALI RESORT & SPA  
UDAIPUR

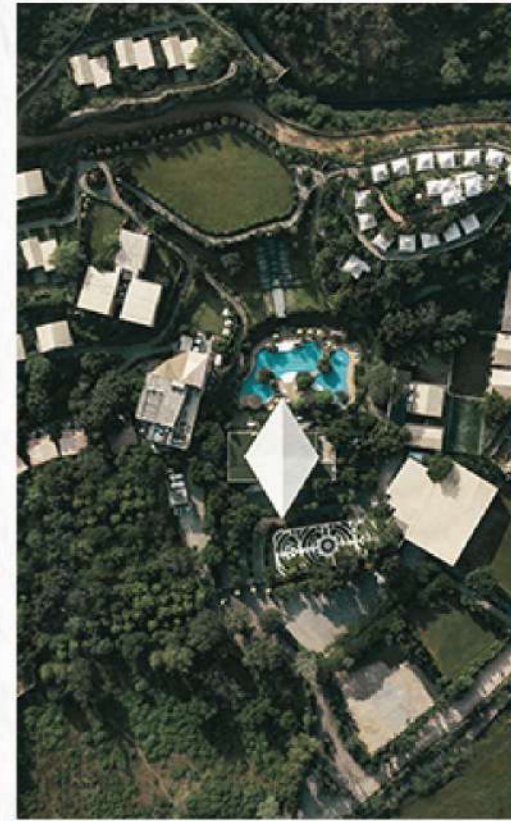
WHERE TIMELESS EXPERIENCES MEET UNMATCHED HOSPITALITY





## INTRODUCTION

Taj Aravali Resort & Spa located against a dramatic backdrop in Udaipur, the city of lakes in Rajasthan has set new standards of luxury. The resort is spread across 27 acres of land at the foot hills of the breath taking Aravali range. The hotel offers 92 luxuriously appointed rooms, suites and tents, a plethora of epicurean experiences, magnificent banqueting venues, lush emerald lawns and a sprawling Jiva Spa. Welcome to a world of luxury, indulgence and tranquility.

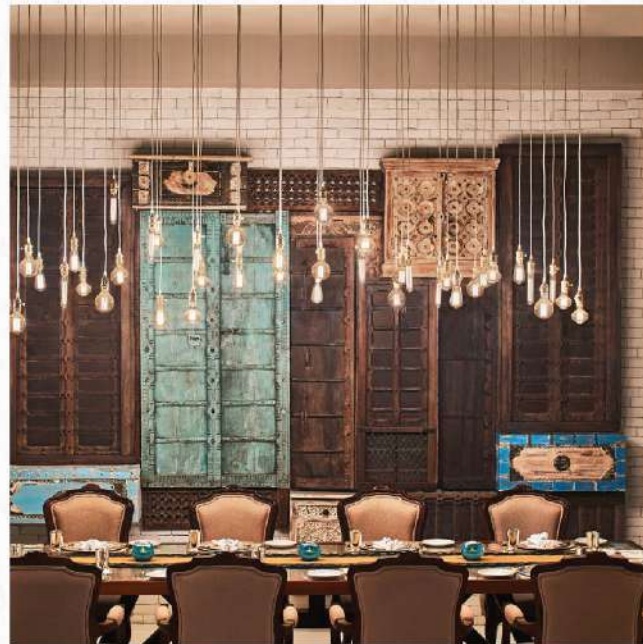




# DINING

## TIRI

Our all day dining featuring Indian and global cuisines, offers a perfect setting to enjoy your meals with your friends and family amidst the beautiful views of Aravali ranges and our lush & green resort.



## JAVITRI

Our signature Indian specialty restaurant is an elegant space and features a dedicated kitchen, in sync with the global food movement towards healthy, fresh, locally-sourced and wholesome food.





# DINING

---

## RIDGEVIEW

---

Our al fresco grill house with live barbecue, overlooking the pool, promising spectacular evenings under the stars and a feast of prized selection of meats, seafood and vegetarian options.



## ODEYPORE LOUNGE BAR

---

Our signature Bar and lounge offering a contemporary setting, perfect for an intimate gathering with your friends and family while you enjoy your drinks and snacks, overlooking the beautiful landscapes and the waterfall







## ACCOMMODATION

### DELUXE HILL/ GARDEN VIEW ROOM

Enjoy breath-taking views of nature at these 41.80 sq mt. rooms. While those on the ground level offer a cosy sit-out, the first floor rooms feature private balconies and panoramic views of the lush greens.



### LUXURY TENT PANORAMIC VIEW

Perched on a hillock, our 44.12 Sq Mt Luxury Tents offer stunning views of the Aravali Range from breezy sit outs. Rugged and adventurous in summers and lush with waterfalls through the monsoons, the mountains provide an inspiring backdrop to the contemporary decor which features organic material like distressed wood, glass and stone, in a soothing pastel palette. The en suite bathroom has a Sunken bath tub, a separate shower area and vanity section.







## ACCOMMODATION

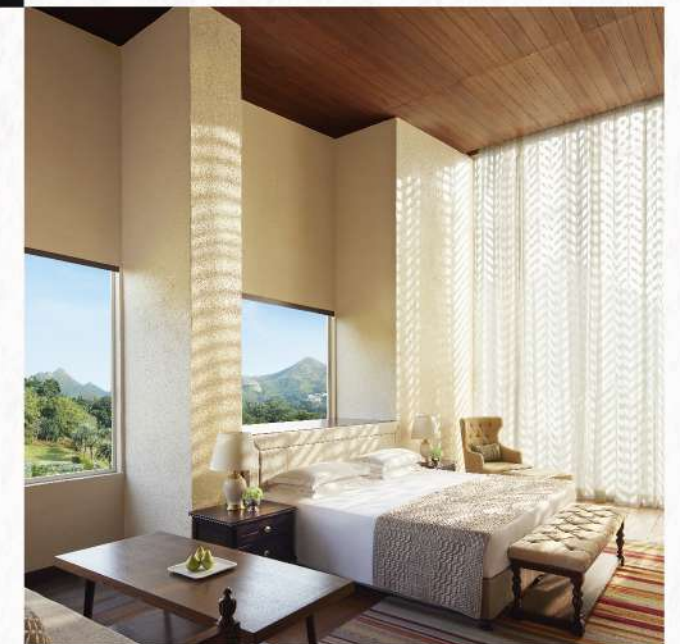
### TRADITIONAL GARDEN VIEW COTTAGE

These 46.45 sq mt cottages set amidst breathtaking views of lush greens feature private sit-outs, Victorian bathtubs and elegantly designed aesthetics.



### TRANQUIL WELLNESS SUITE

Located in the independent Jiva Spa block, our Spa Suites are ideal residences for honeymooners or a family spa vacation. At 92.90 Sq Mt each of these four exclusive residences is a study in minimalist, organic luxury. The suite décor celebrates the rugged beauty of Nature with an earthy tones and a unique stone cladding design. The texture of the walls echo the rolling hills and manicured gardens. The simple ergonomic furniture, creates an uncluttered space to relax and revel in. The showstopper four-fixture bathroom – with the signature stone cladding – is designed to soak in long baths as well as stunning views of the garden and mountains.







## ACCOMMODATION

### LUXURY HILL VIEW SUITE WITH GARDEN & SIT-OUT

Well laid out 55.74 sq mt, these suites offer spacious verandahs overlooking the lush green lawns and hills and a modern version of the traditional Rajasthani Gokhra - cushioned, low seating areas by the window.



### REGAL TENT SUITE PANORAMIC VIEW

A sweeping view of the Aravali mountains as well as a vantage view of the resort's swimming pool and lovely gardens, a private garden for long, relaxed breakfast and romantic candle light dinners, glorious sunken bathtub and a separate shower area with beautiful skylight. 68.74 Sq Mt is size, this suite is a blend of luxury and elegance.







## ACCOMMODATION

### LUXURY GLASS BOX TWO BEDROOM SUITE PANORAMIC VIEW

When opulence meets tradition at the Presidential Suite of Taj Aravali Resort & Spa. Luxury Glass Box Suite follows the contemporary design philosophy and is inspired by Rajasthani architecture with furnishings inspired by Mewar's world class equestrian heritage with enhanced amenities and uninhibited splendour.



Sprawled across 269.41 sq m. amidst lush greenery, this 2-bedroom suite, offers luxury with style and tradition. The 2-storied complex has the spacious master bedroom with a balcony and a second bedroom with ensuite bathroom featuring private outdoor shower areas.

The suite opens into a reception area, a large living room with a 10-seater dining area, a beautiful study and a powder too. With daybeds and courtyards provides privacy and adds to the breathtaking beauty and opulence. Nature surrounds you with its verdant gift in this magnificent location.





## MEET & CELEBRATE

### GRAND BALL ROOM

Surround yourself in the sophisticated elegance of our tastefully designed and well appointed banquet venues. Synonymous with meetings, conferences, celebrations and soirées, our grand ballroom reflects luxury and grandeur. Our unparalleled meetings and events expertise, culinary craftsmanship and legendary hospitality have together create unforgettable memories over the years.



### BANQUET LAWNS

Our lush banquet laws offers panoramic views of the surrounding Aravali ranges the meandering pool and the Reception block. The perfect venue for Grand Event, Product launches and Destination wedding.







## EXPERIENCES

### EPICUREAN TALES

Indulge in bespoke culinary experiences, crafted just for you. From a sumptuous picnic on the Aravali mountains at the most scenic spot of the city to an elegant high tea crafted amidst our lush lawns. Allow our culinary maestros to enthrall you with a delectable feast.



### J WELLNESS CIRCLE

The journey for achieving harmony between nature and self, began in India over 5000 years ago, where Spiritual Reflection, Healing and Balance were experienced by heightening the use of all five senses. With the passage of time, India's ancient science of inner well-being made its way to weary warriors, kings and statesmen for their relaxation and rejuvenation. It was further complemented by the elaborate beauty rituals of kings and queens. These age-old traditions have continued their journey into the millennium. We invite you to our luxurious sanctuary to restore balance – in the way it all began!







  
ARAVALI RESORT & SPA  
UDAIPUR

---

1, KHEEMACH KHEDA, NEAR KODIYAT FOREST CHOWKI, BUJRA,  
UDAIPUR, RAJASTHAN, 313031 RAJASTHAN, INDIA, INDIA  
T: +91 294-2681000 | E: RESERVATIONS.ARAVALI@TAJHOTELS.COM