

TAJ  
COROMANDEL  
CHENNAI

EVENTS AND OCCASIONS



*One of Chennai's most distinguished addresses, Taj Coromandel, Chennai stands as The Icon Of The South, embodying a legacy of grace, grandeur and unmatched hospitality. With its central location, resplendent interiors, and thoughtfully appointed spaces, it continues to be the preferred choice for both business and leisure travellers.*

*As a premier venue for meetings and conferences, it offers exceptional convenience with its location and close proximity of the airport. Featuring over 1,100 sq. m. of versatile event facilities and a fully equipped modern business centre, every detail is designed to ensure a truly effortless experience.*



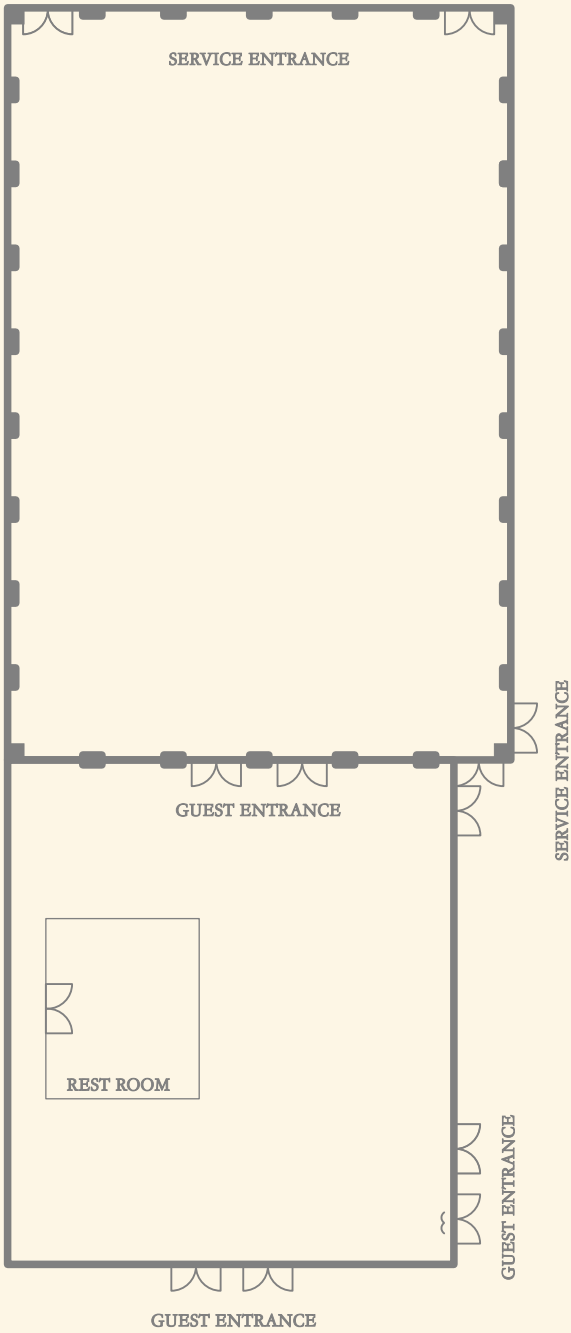
## GRAND BALLROOM



*This large recently redesigned venue of over 836 sq. m. is ideal for weddings, receptions, corporate events & conferences with 372 sq. m. exclusive pre-function area.*



GRAND BALLROOM - FLOOR PLAN



DIMENSIONS & SEATING CAPACITIES

<div><div></div><div></div><div></div><div></div><div></div><div></div><div></div></div>						
Area (sq. mts.)	Dimension (m.)	Height (m.)	Theatre	Cluster	Classroom	U-Shape
838.62	23.67 x 35.43	4.27	1000 pax	400 pax	500 pax	120 pax

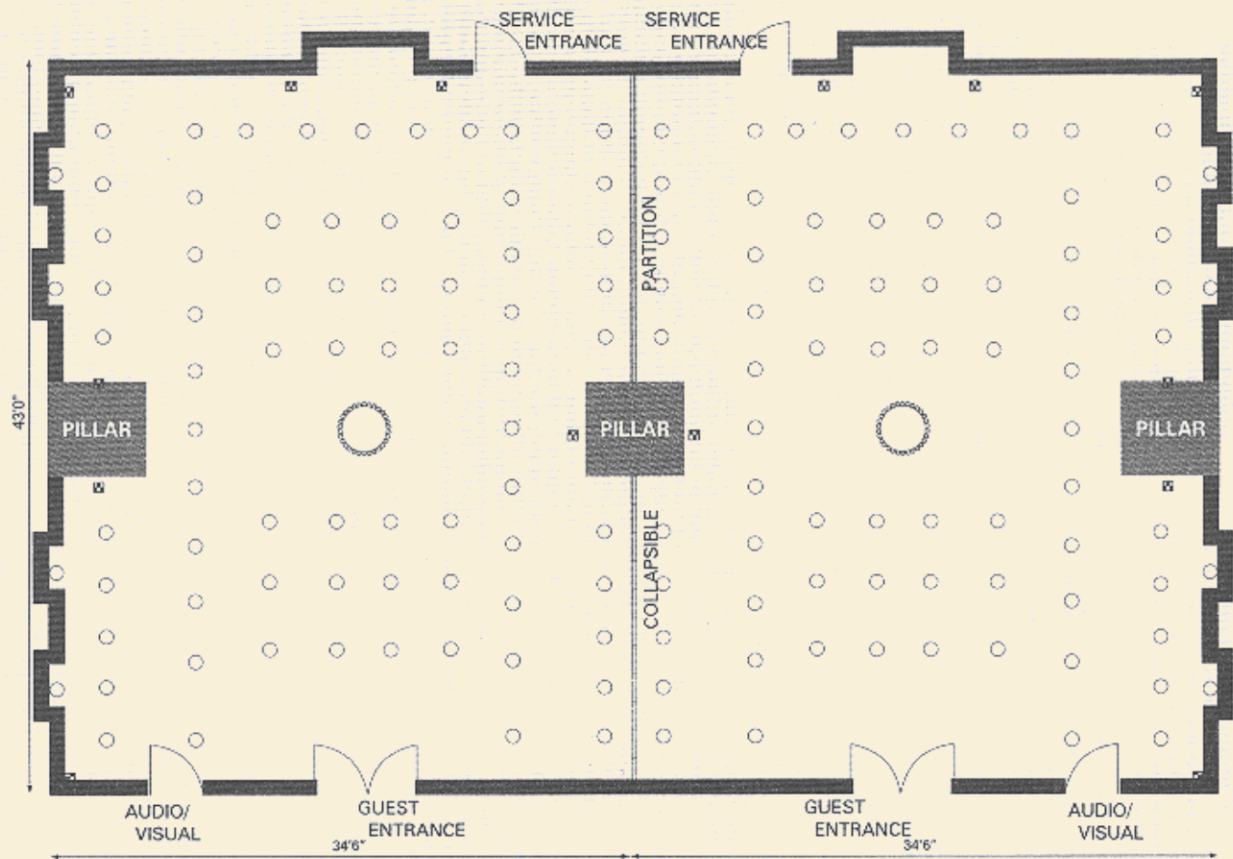
# CLIVE DUPLEIX



*This majestic & comfortable venue combined with an exemplary services will assure you most memorable events.*



## CLIVE DUPELIX - FLOOR PLAN



### DIMENSIONS & SEATING CAPACITIES



Area (sq. mts.)	Dimension (m.)	Height (m.)	Theatre	Cluster	Classroom	U-Shape
276.14	21.08 x 13.10	2.83	150 pax	96 pax	70 pax	35 pax

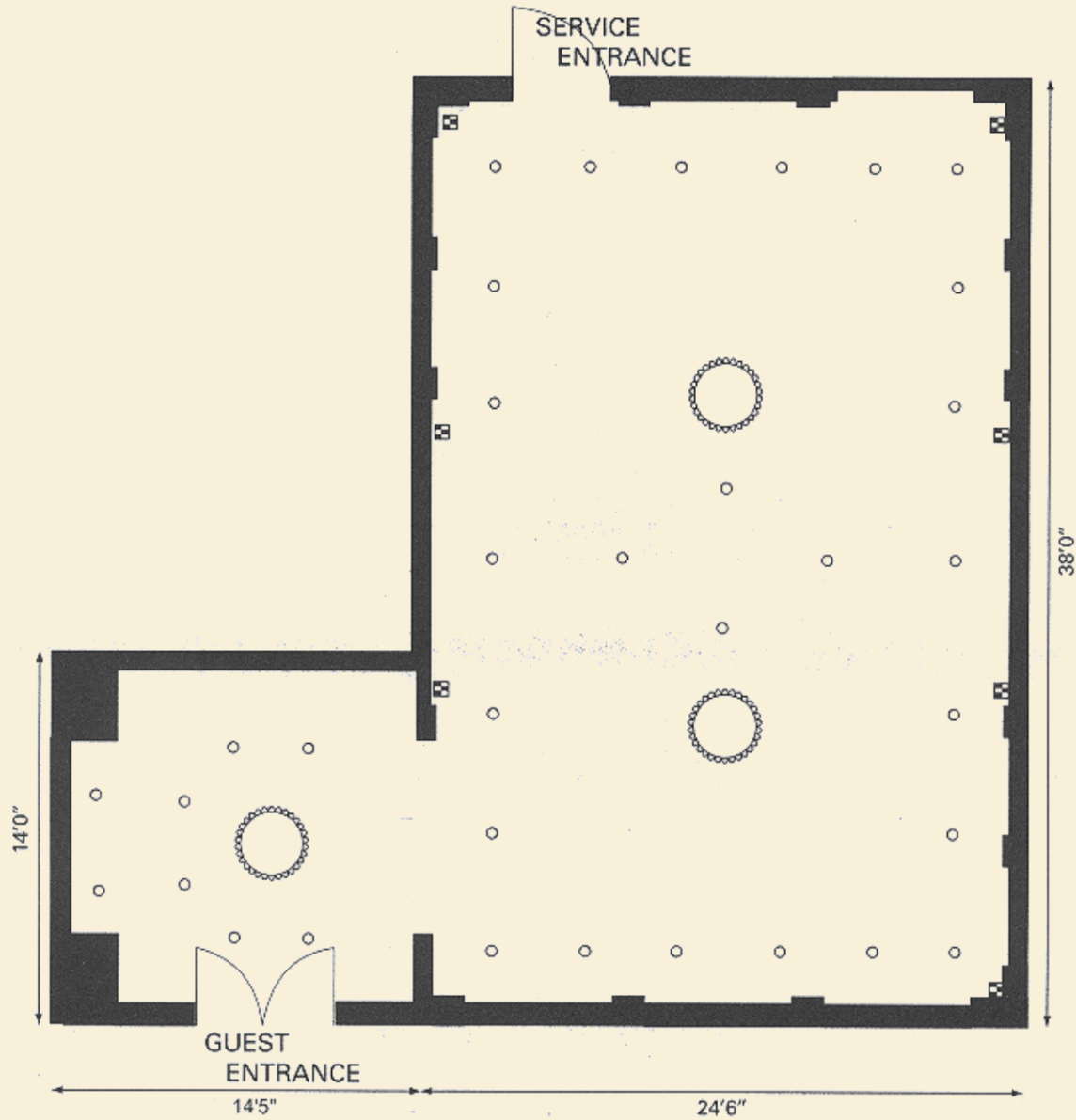
# WILLINGDON



*This venue is ideal for intimate and exclusive gatherings for up to 40 guests  
with an area of 87 sq. m.*



## WILLINGDON - FLOOR PLAN



### DIMENSIONS & SEATING CAPACITIES



Area (sq. mts.)	Dimension (m.)	Height (m.)	Theatre	Cluster	Classroom	U-Shape
105.81	7.49 x 11.58	2.83	40 pax	32 pax	20 pax	20 pax

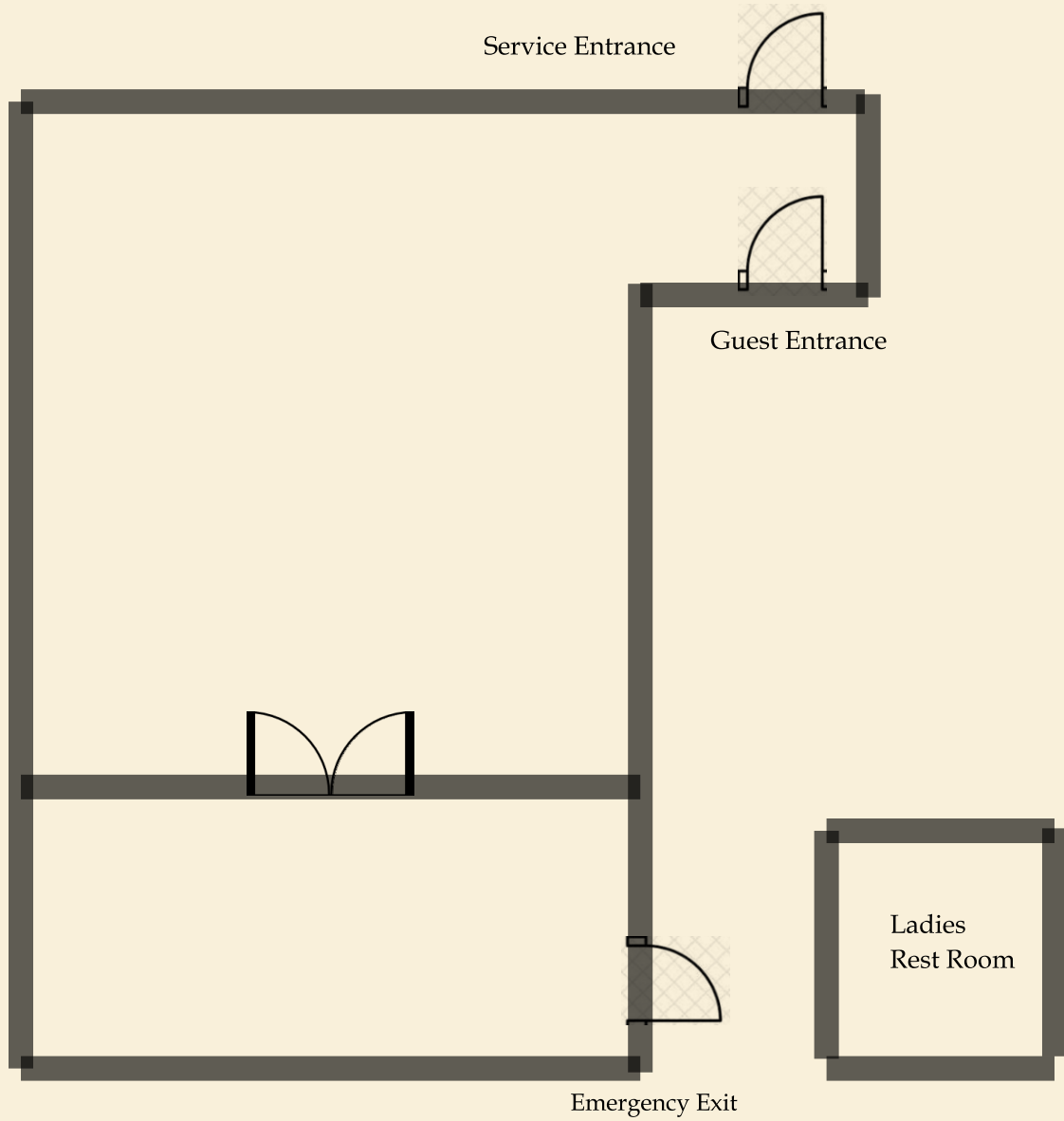
## SENATE



*Experience Taj Coromandel's newest banquet venue at the Lower Lobby—an intimate 100.4 sqm space designed for up to 50 guests. Perfect for exclusive gatherings, it offers world-class cuisine, impeccable service, and a sophisticated ambiance. From curated menus to seamless execution, every detail is crafted to perfection. Celebrate in Chennai's most iconic address, where elegance meets excellence.*



## SENATE - FLOOR PLAN



### DIMENSIONS & SEATING CAPACITIES



Area (sq. mts.)	Dimension (m.)	Height (m.)	Theatre	Cluster	Classroom	U-Shape
100.04	6.16 x 16.24	2.86	60 pax	40 pax	36 pax	30 pax

## BOARDROOM 1



*Experience the perfect blend of business and comfort at our hotel's state-of-the-art boardroom. The meeting room with a fixed setting has a rectangular table with executive-style leather chairs for a maximum of thirteen people in the middle. Additionally, the space of the hall is 28.8 square meters, providing all the amenities you need for meetings and events.*

*Among its amenities, the boardroom boasts an ideal setting for business meetings and is equipped with an inbuilt 75-inch LED TV, a coffee machine and internet access for up to three devices.*



BOARDROOM 1 - SEATING PLAN



Venue Name	Area (sq. mts.)	Dimension (m.)	Height (m.)	Theatre	Cluster	Classroom	U-Shape	Located at
Boardroom 1	28.8	6.7 x 4.3	2.43	-	-	-	13 pax	Lobby Level

## BOARDROOM 2



*Experience the perfect blend of business and comfort at our hotel's state-of-the-art boardroom; ideally a conference room furnished with a big rectangular table and chairs, spacious enough to comfortably seat all your guests, accommodating a maximum of sixteen people, and complete with all the amenities you need for meetings and events.*

*As part of our facilities, the boardroom is equipped with a projector, screen and internet access for up to three devices. Additionally, our attentive team will provide two rounds of tea and coffee service to enhance your meeting experience.*



BOARDROOM 2 - SEATING PLAN



Venue Name	Area (sq. mts.)	Dimension (m.)	Height (m.)	Theatre	Cluster	Classroom	U-Shape	Located at
Boardroom 2	36.5	8.5 x 4.3	2.43	-	-	-	16	Lower Lobby Level

