



TAJ

HARI MAHAL
JODHPUR

WHERE TIMELESS EXPERIENCES MEET UNMATCHED HOSPITALITY



INTRODUCTION

Taj Hari Mahal, Jodhpur - truly a palace of the 21st century - lies 4 kms from the airport and 3.5 kms from the railway station and is spread over six lush acres of landscaped gardens. Designed to be full of surprises, the design is inspired by Marwar style architecture and Moghul-inspired domes, enameled murals, slender columns, and grand interiors. Sheer fantasy comes alive.



DINING

MARWAR

Offers global cuisine infused with a heady fragrance of Marwar defines the versatile appeal of our all-day diner. The restaurant's legendary breakfast, lunch and dinner buffets - served in an expansive colonial-style space with modern décor and jewel toned furnishings - are loved by gourmands across the city.



GOOD EARTH

The first choice for connoisseurs of Chinese food in Jodhpur, this charming two-level restaurant packs a flavourful punch. The air is scented with whiffs of Cantonese and Szechwan cuisines.

THE BAR

A fabulous Tree of Life sculpture forms the backdrop of our modish lounge, the top spot for the city's night revelers who like to party under a starlit sky, surrounded by contemporary Rajasthani art and great conversation as the bubbly flows unabated.





ACCOMMODATION

DELUXE ROOM

These 37 Sq.mt. deluxe rooms are both garden and pool facing. Contemporary design with graceful Rajasthani accents and all-day impeccable service makes them ideal for business or leisure travelers.

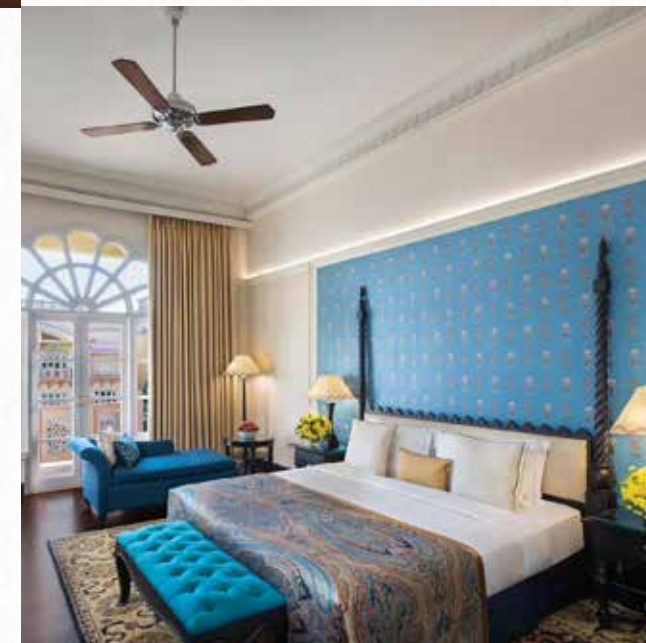
LUXURY ROOM

37 Sq.mt. luxury rooms have more than just a business outlook. The princely-inspired decor and well-equipped appearance come with a perfect view of pristine manicured garden and/ or one of the largest swimming pool in the city.



PREMIUM SUITE

One of Jodhpur's finest pool facing suites, this 84 Sq.mt. luxurious guest residence has a sitting room with a LCD television set, a bedroom with a king-sized bed and an indulgent pillow menu. From the health drinks and chocolates in the loaded mini bar to freshly brewed coffee and daily newspapers at your door, our in-room service makes you feel like the queen/king of this retreat.



MEET & CELEBRATE

BOARD ROOM 1

At 38 Sq.mt., Board Room 1 is compact and chic, perfect for when you want fuss-free meetings for a small group with minimal stress and maximum output. The contemporary, sunlit room accommodates 8 to 10 people.



BOARD ROOM 2

This 24 Sq.mt. sunlit and modern room is ideal for corporate meetings, accommodating a maximum of 12 people. It's smart, compact design is backed by efficient service, including secretarial assistance and technical equipment as well as tea/coffee/snacks available on request.

MEHERANGARH HALL

Designed for a seating capacity of 50 to 150 people, the pillar-less 195 Sq.mt. Meherangarh Hall is ideal to host medium-sized events with the option of various configurations and customized settings.





MEET & CELEBRATE

AMAR HALL

A sprawling 511 Sq.mt. pillar-less space, Amar Hall is as adaptable as it's luxurious. The 3038 sq. mt. pre-function area can be converted into three breakaways, which allows for arrangements for wedding events to larger corporate conferences.



MEHERANGARH TERRACE

Named after the city's most imposing monument, this 1874 Sq.mt. wraparound terrace has a seating capacity of 1000 guests, and is the city's numero uno spot to host wedding receptions and lavish parties. The terrace offers 360 degrees view of the palace.



EXPERIENCES

FITNESS CENTRE

A 24/7 haven for workout enthusiasts, our fitness center is equipped with cardio and Life Fitness circuit training machines and free weights. Trained instructors are available on requests to assist in workouts and guide you through a relaxing session of Yoga and Meditation. Follow up with a couple of laps in the swimming pool or a stressbusting massage.



BAAJOT AND BONFIRE DINNER

If you're looking to serenade a special someone with a truly divine evening, book our splendid Baajot and Bonfire experience. A romantic Rajasthani twist on the quintessential candlelight dinner, it centers on a four course gourmet meal served on the palace's lawns. Sink into lush cushions as the courses are laid out on hand-painted baajot, local, low-slung square tables.





EXPERIENCES

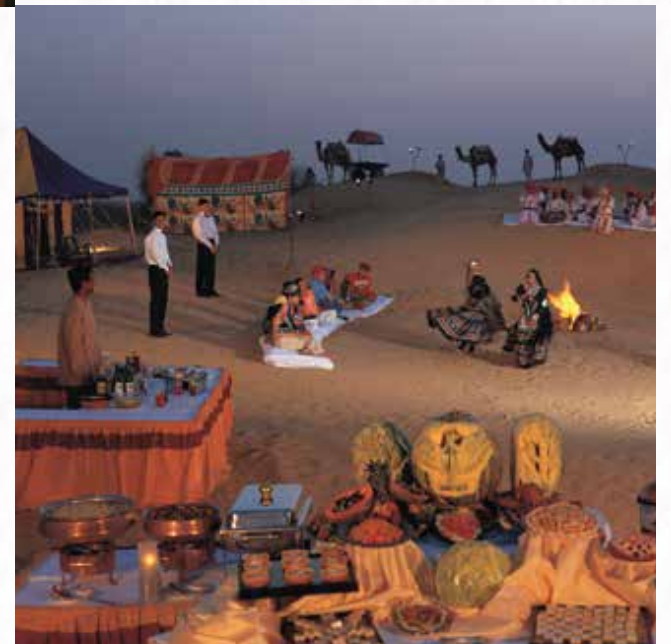
BISHNOI VILLAGE SAFARI

Living on the fringes of the Thar desert at a distance of 30 kilometers from Jodhpur, Bishnoi is an extraordinary community of 'tree huggers', ardent nature lovers and the earliest environmentalists in the state. The safari includes a packed lunch and open jeep drive to the villages where guests can observe the lifestyle of the Bishnoi people and interact with them.



SAND DUNE GALA DINNER

The undulating sand dunes of the Great Indian Desert a.k.a the Thar Desert are one of Jodhpur's most captivating attractions. Known as 'giant ripples', these humongous, mobile mounds of soft, warm and golden sand are like mirages and make for the perfect canvas to luxuriate in a desert celebration like no other. Begin with camel rides and jeep drives that let you tumble softly through the rolling sand, an experience that's heady and rhythmic.





TAJ
HARI MAHAL
JODHPUR

5TH, RESIDENCY RD, JODHPUR, RAJASTHAN - 342001
PHONE: 0291 243 9700 | EMAIL: HARIMAHAL.JODHPUR@TAJHOTELS.COM
WWW.TAJHOTELS.COM