

TAJ  
HARI MAHAL  
JODHPUR



EVENTS AND OCCASIONS



*Set amidst six acres of manicured gardens and Mughal-inspired architecture, Taj Hari Mahal, Jodhpur is a regal oasis where gatherings are steeped in grandeur. Marble facades, latticed windows and domed archways frame an ambience of timeless sophistication, while versatile venues provide the perfect backdrop for fairy-tale weddings, spectacular soirées and high-profile corporate events.*

*Whether an intimate board meeting or a grand celebration under desert skies, the vast, exotic landscape, versatile venues and impeccable service transform occasions into experiences worthy of Jodhpur's royal legacy.*





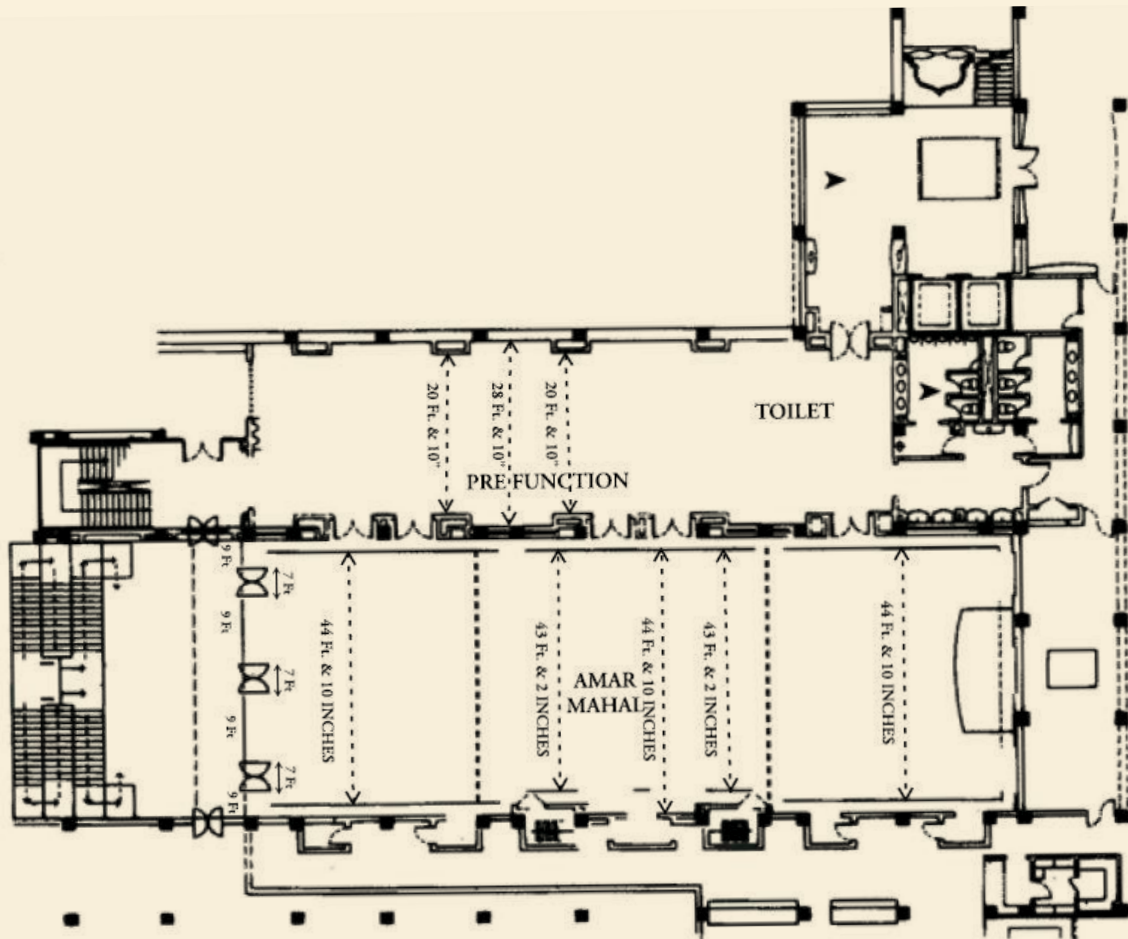
## AMAR HALL



*A sprawling pillarless space, Amar Hall is as adaptable as it is luxurious. The expansive pre-function area can be converted into smaller breakaways or left open for grand occasions. From weddings that embrace regal splendour to exhibitions and corporate gatherings of scale, the hall offers both versatility and grandeur.*



## AMAR HALL - FLOOR PLAN



### DIMENSIONS & SEATING CAPACITIES



Area (m <sup>2</sup> )	Dimensions (m)	Ceiling Height (m)	U Shaped	Rectangle	Classroom	Theatre	Round table	Floating
511	37 x 14 x 4	4.12	100 pax	-	200 pax	425 pax	180 pax	500 pax

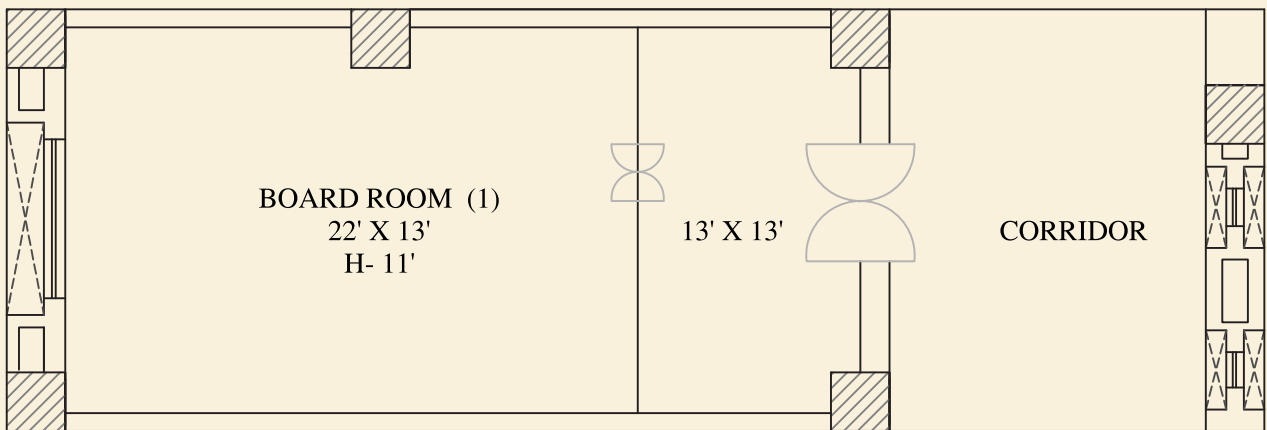
## BOARD ROOM I









*Intimate yet refined, Board Room 1 is designed for focus and clarity. Sunlit interiors and contemporary design create an atmosphere that feels both composed and uplifting, allowing discussions to unfold with minimal distraction and maximum efficiency.*



## BOARD ROOM I - FLOOR PLAN



### DIMENSIONS & SEATING CAPACITIES

								
Area (m <sup>2</sup> )	Dimensions (m)	Ceiling Height (m)	U Shaped	Boardroom	Classroom	Theatre	Round table	Floating
38	7 x 5	4	12 pax	14 pax	-	-	-	-

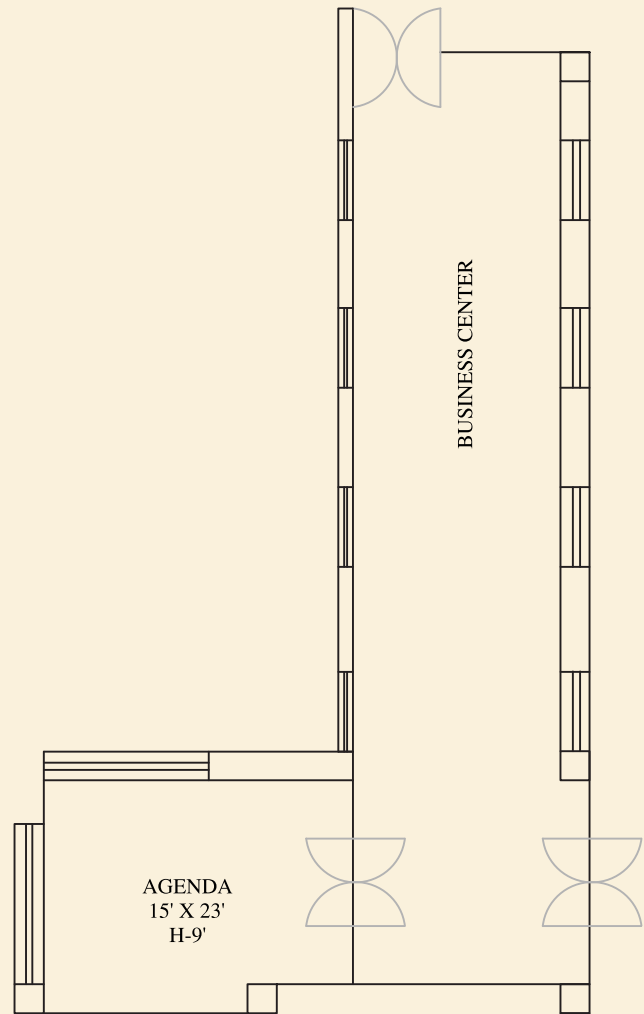
## AGENDA BOARD ROOM



*The Agenda Board Room offers a touch more space while retaining a polished, modern style. Its smart, compact design comes equipped with secretarial services, technical support and refreshments on request—designed for meetings that balance professionalism with comfort.*



# AGENDA BOARD ROOM - FLOOR PLAN



## DIMENSIONS & SEATING CAPACITIES

<div><div></div><div></div><div></div><div></div><div></div><div></div><div></div><div></div><div></div></div>								
Area (m²)	Dimensions (m)	Ceiling Height (m)	U Shaped	Boardroom	Classroom	Theatre	Round table	Floating
24	6 x 4	-	9 pax	10 pax	-	-	-	-



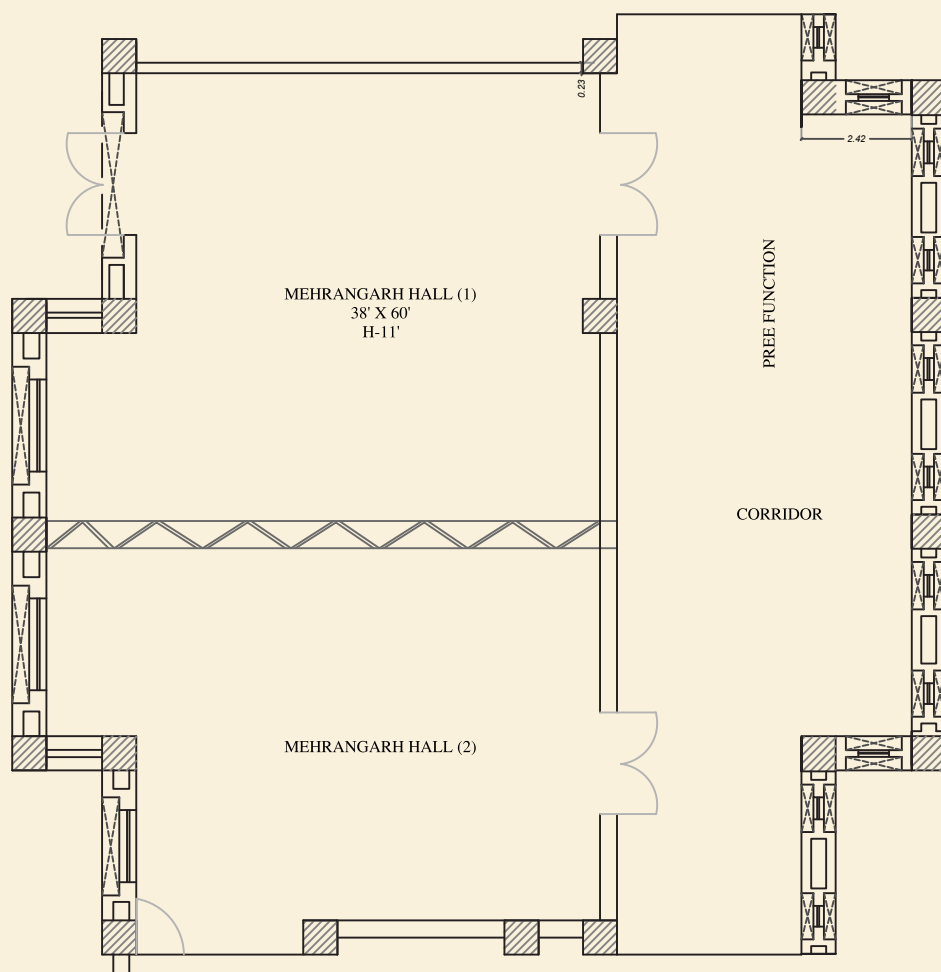
## MEHERANGARH HALL









*A pillarless expanse, Meherangarh Hall adapts effortlessly to mid-sized events, from conferences to banquets. With flexible configurations and customised settings, it combines functionality with understated elegance.*



## MEHERANGARH HALL - FLOOR PLAN



### DIMENSIONS & SEATING CAPACITIES

								
Area (m <sup>2</sup> )	Dimensions (m)	Ceiling Height (m)	U Shaped	Rectangle	Classroom	Theatre	Round table	Floating
195	19 x 11 x 4	3.60	35 pax	-	40 pax	100 pax	60 pax	100 pax

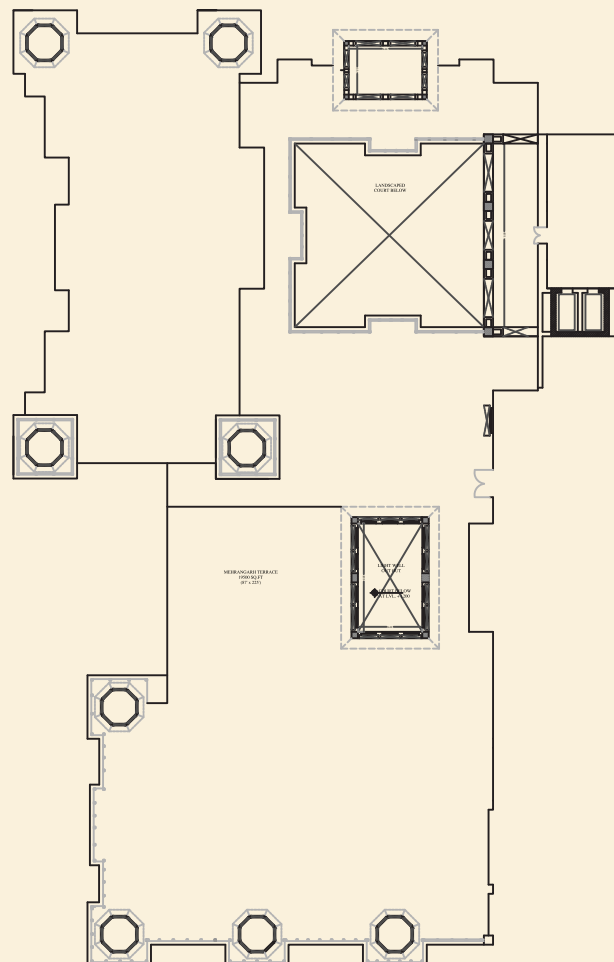
## MEHERANGARH TERRACE









*Named after the city's most imposing monument  
and the crown jewel of Taj Hari Mahal, Meherangarh Terrace  
offers sweeping 360-degree views of Jodhpur's skyline.  
A coveted setting for wedding receptions, milestone celebrations  
and soirées under the stars, it forms an unforgettable backdrop  
to your most treasured moments.*



## MEHERANGARH TERRACE - FLOOR PLAN



### DIMENSIONS & SEATING CAPACITIES

								
Area (m <sup>2</sup> )	Dimensions (m)	Ceiling Height (m)	U Shaped	Rectangle	Classroom	Theatre	Round table	Floating
1874	-	-	-	-	600 pax	700 pax	450 pax	1000 pax



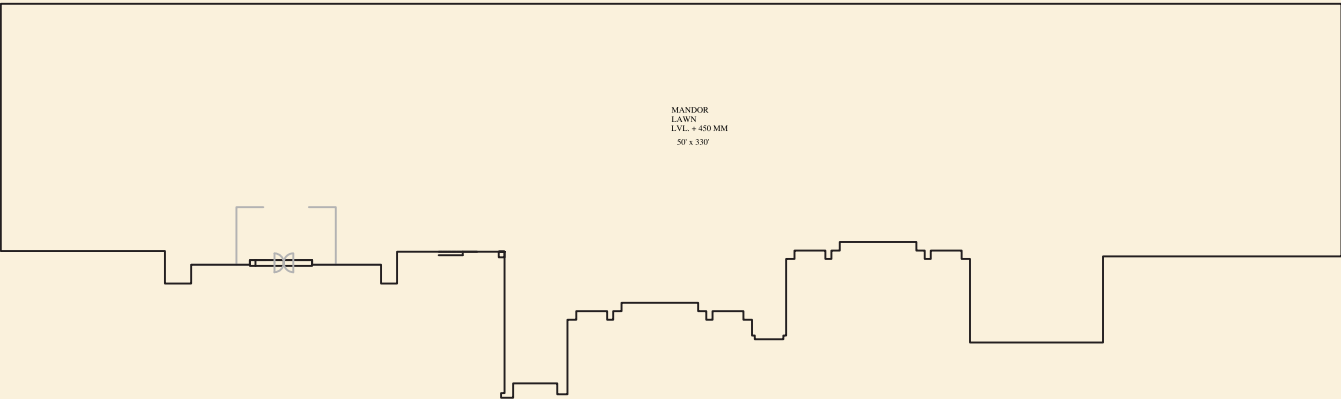
## MANDORE LAWN



*Set against a historic backdrop, Mandore Lawn  
offers a majestic open-air stage for grand corporate gatherings  
and large celebrations. Charming and lush, it transforms  
occasions into treasured memories.*



MANDORE LAWN - FLOOR PLAN



DIMENSIONS & SEATING CAPACITIES

Area (m²)	Dimensions (m)	Ceiling Height (m)	<div><div></div><div></div><div></div><div></div><div></div><div></div></div>					
			U Shaped	Rectangle	Classroom	Theatre	Round table	Floating
420	34 x 11	-	-	-	-	150 pax	200 pax	300 pax

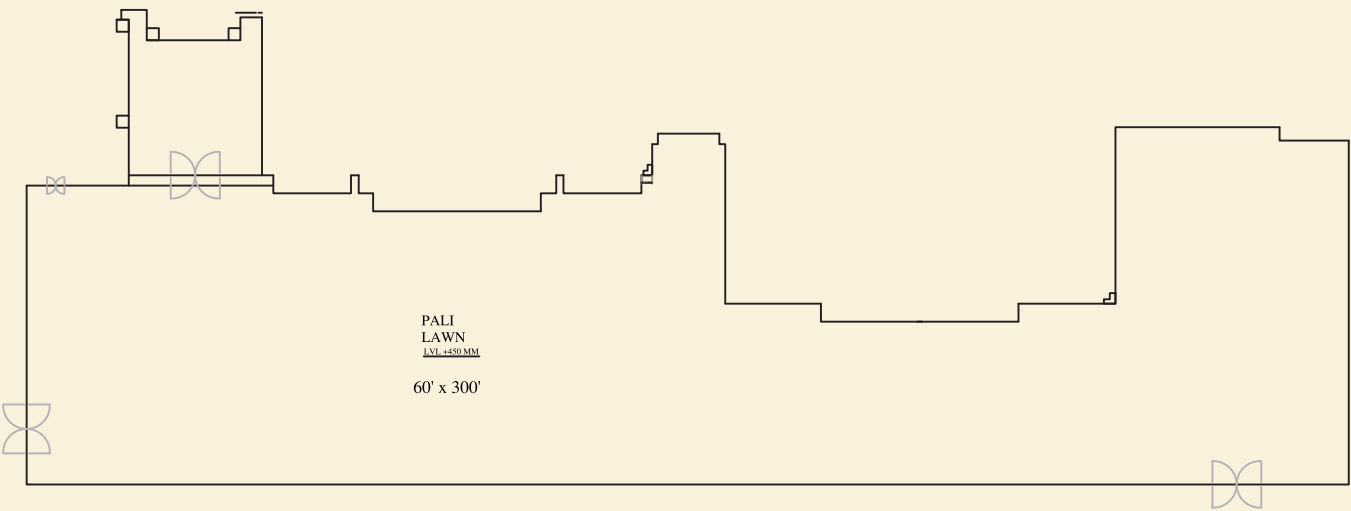
## PALI LAWN









*Framed by lush greenery and the open sky,  
Pali Lawn is an expansive canvas for fairy-tale weddings,  
garden soirées and al fresco celebrations.  
Its natural beauty and generous scale create an atmosphere  
both enchanting and unforgettable.*



PALI LAWN - FLOOR PLAN



DIMENSIONS & SEATING CAPACITIES

								
Area (m²)	Dimensions (m)	Ceiling Height (m)	U Shaped	Rectangle	Classroom	Theatre	Round table	Floating
492	41 x 12	-	-	-	-	275 pax	200 pax	500 pax



