

TAJ
CITY CENTRE
PATNA



DISCOVER A CORNER OF HEAVEN CALLED NYE-MAE-EL



TAJ CITY CENTRE PATNA

The oldest continuously inhabited city, Patna holds center stage in India's civilisational timeline. Earlier called Pataliputra, it traces back to 600 B.C. and has been the capital seat of mighty empires, spiritual movements & social revolutions. This is the pride and essence that the Taj Patna carries within its spaces and through its service.

Evident in the Pranaam, the gracious, warm welcome you receive as you step in. 124 sprawling rooms & suites, some with jacuzzis and each with a view, surpass expected luxury, while corridors with Sujani art and photographs usher you into the city's culture. Here, 20 minutes from the airport, and literally at the heart of the city, every journey starts with a warm Pranaam and carries the pride of a vibrant city within.



HIGHLIGHTS

ACCOMMODATION

- DELUXE ROOM
- LUXURY ROOM
- PREMIUM ROOM
- GRAND LUXURY ROOM WITH JACUZZI
- LUXURY SUITE MARINE DRIVE VIEW
- GRAND LUXURY SUITE WITH JACUZZI



DINING

- SHAMIANA, ALL-DAY-DINING
- HOUSE OF MING, ORIENTAL RESTAURANT
- ROOFTOP DINING WITH SKYLINE VIEWS





HIGHLIGHTS

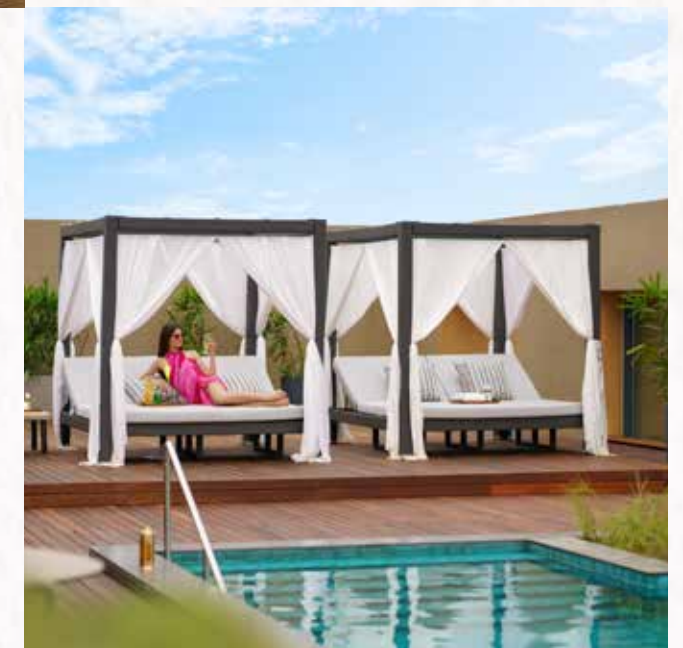
MEETINGS & BANQUETS

- VAISHALI
- MITHILA
- MAGADH MULTIPURPOSE ROOM
- GANGA BOARD ROOM



FITNESS & WELL-BEING

- J WELLNESS CIRCLE SPA
- ROOFTOP POOL
- FITNESS CENTRE
- JACUZZI & STEAM



ACCOMMODATION

124 sprawling rooms and suites, some with jacuzzis and each with a view, surpass expected luxury. Designed to ensure a memorable stay, each space is a blend of premium comfort and local culture, complete with service that is uniquely Taj.

DELUXE ROOM

Nestled in 33 sq. mts. of premium comfort, the Deluxe Rooms are defined by cultural artistry and spatial luxury. Indulge the senses in the bustling, captivating view of the city while being pampered by premium amenities and signature Taj service.



LUXURY ROOM

A panoramic view of the city, from the seat of refined comfort. The Luxury Rooms, 33 sq.mts. in size, situated on higher floors, house local art, plush upholstery, an inviting King Bed, and premium amenities. Topped with service that is uniquely Taj.





ACCOMMODATION

PREMIUM ROOM

Survey your surroundings from your grand perch at Taj City Centre Patna. Exuding a sense of calm and grandeur, the 33 sq.mts. Premium Rooms are located on higher floors with expansive views of Marine Drive and the bustling city. Complete with service that is uniquely Taj.



GRAND LUXURY ROOM WITH JACUZZI

As the day turns to night, bask in the breathtaking vistas of the cityscape or the changing skies, from your king bed or from the comfort of your private jacuzzi. Complete with premium amenities and warm service, quintessentially Taj. 45 sq.mts in size, these rooms come in options of King bed and Twin bed accommodation.



ACCOMMODATION

LUXURY SUITE MARINE DRIVE VIEW

Relax, spend time with family, or prepare for a meeting in our exclusive Luxury Suites, each 66 sq.mts in size and complete with a living room and breathtaking views of Marine Drive, elevating comfort and thought. Complete with Sujani-inspired tributes to Patna and quintessential Taj service.



GRAND LUXURY SUITE WITH JACUZZI

Experience the imperial heritage of Patna with this 78 sq.mts suite. Observe the moods of the sky change from the comfort of your king bed, relax in the revivifying embrace of your private jacuzzi, or do nothing at all in the tastefully designed living room, accented by objets d'art of Patna's past and present. Elevated by service that is uniquely Taj.





DINING

Patna, shaped by five empires, is home to some of the nation's most eclectic delicacies. Discerning diners relish regional classics at Shamiana's, all-day dining while the famed House of Ming, tempts with Cantonese, Sichuan & Hunan delicacies. Discover the rich flavours of Bihar's culinary traditions while you get pampered with Taj's signature service.



SHAMIANA, ALL DAY DINING

Shamiana feels like home, the warm and blue tones, accented by plants and evocative Sujani art, setting the stage for delights to come. Continental fare remains scrumptious, while delicacies like Litti Chokha and Ahuna Mutton explore the heart & soul of Bihari cuisine, each masterfully crafted dish offering a joyful burst of flavours for the curious epicurean.



DINING

HOUSE OF MING

The famed House of Ming tempts with Cantonese, Sichuan and Hunan delicacies. Discerning diners relish the iconic and meticulously prepared Chinese dishes, the Chef's variation on the dumplings a must-try for gourmands. Classic favourites and innovative creations, topped with impeccable service, captivate the palate, making each visit transcendent.



ROOFTOP DINING WITH SKYLINE VIEWS

Experience the imperial heritage of Patna with this 78 sq.mts suite. Observe the moods of the sky change from the comfort of your king bed, relax in the revivifying embrace of your private jacuzzi, or do nothing at all in the tastefully designed living room, accented by objets d'art of Patna's past and present. Elevated by service that is uniquely Taj.





MEETINGS & BANQUETS

Prestige and taste, defining traits of the hotel, are brought alive at Taj Patna's event spaces, each named after a historically significant town or river and each crafted to house singular, momentous stories for any occasion. With a prime location at the heart of the city, easy access to the promenade and the cultural highlights of the city, Taj City Centre holds central court.



VAISHALI

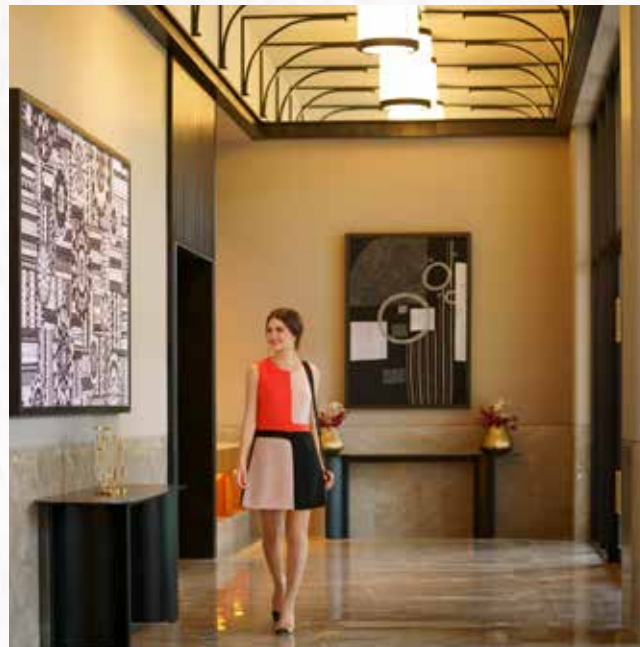
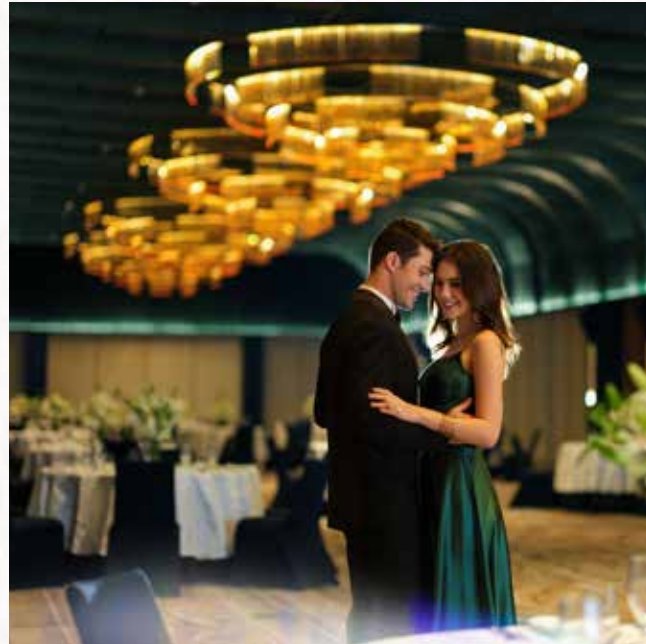
With high ceilings, chandeliers, velvet interiors, the 513 sq m Vaishali was conceived for grand affairs - be they weddings, receptions, or conferences. Vaishali, with the velvet finish and a curved ceiling reminiscent of Chaitya architecture, is grand, minimally designed chandeliers adding an edge. An additional 290 sqm of the pre-function area, complete with motifs of the Tree of Life, add to the space, elegant grandeur a constant theme.



MEETINGS & BANQUETS

MITHILA

Versatility, elegance, and creativity converge at Mithila, ideal for small-to-mid-sized celebrations and events. Mithila, featuring vibrant Sujani art against stoic navy and beige hues, inspires creativity and openness. With a private pre-function area and two points of entry, it is tailor-made for momentous intimate affairs and brainstorming sessions.



MAGADH MULTIPURPOSE ROOM

Magadh, ideal for intimate to mid-sized affairs and corporate conferences, has an air of refined revelry. A verdant porch presents the option of direct, exclusive access to Magadh's pre-function area. Inside, subdued hues of beiges and browns, juxtaposed with Sujani art, provide a refined backdrop, ensuring attendees remain the centre of attention, and adding to Magadh's elevated ambience.





MEETINGS & BANQUETS

GANGA BOARD ROOM

Ganges is an ideal meeting room for decision-makers, featuring two large windows and a small pre-function area for breaks. Perfect for executives looking for a space that combines functionality and comfort.



FITNESS & WELLBEING

Be it the secrets of ancient wellness therapies at the spa, comprehensive fitness centre facilities, the becalming Jacuzzi rooms and suites that bring in wellness to private residences or unwinding in the rooftop pool, Taj City Centre is ideal for staycations.



J WELLNESS CIRCLE SPA

Soothe the self at J Wellness Circle, where timeless Indian healing practices, drawing from the sacred elements of Jal, Vayu, Agni, Prithvi, and Akash, guide your journey to transformation - in mind, body, and spirit. Experience Ayurveda-inspired Spa treatments and therapies and begin your journey to profound wellness.





FITNESS & WELLBEING

ROOFTOP POOL

Dive into relaxation at our rooftop swimming pool. Bask in the sun on comfortable loungers, enjoy refreshing dips, and let the tranquil waters soothe your senses. It's the perfect oasis for unwinding and enjoying leisurely moments.



FITNESS CENTRE

Maintain your fitness routine at our fitness centre. Equipped with premium equipment, it offers everything you need for a hearty workout. Enjoy invigorating sessions and stay active while traveling, ensuring you feel your best.



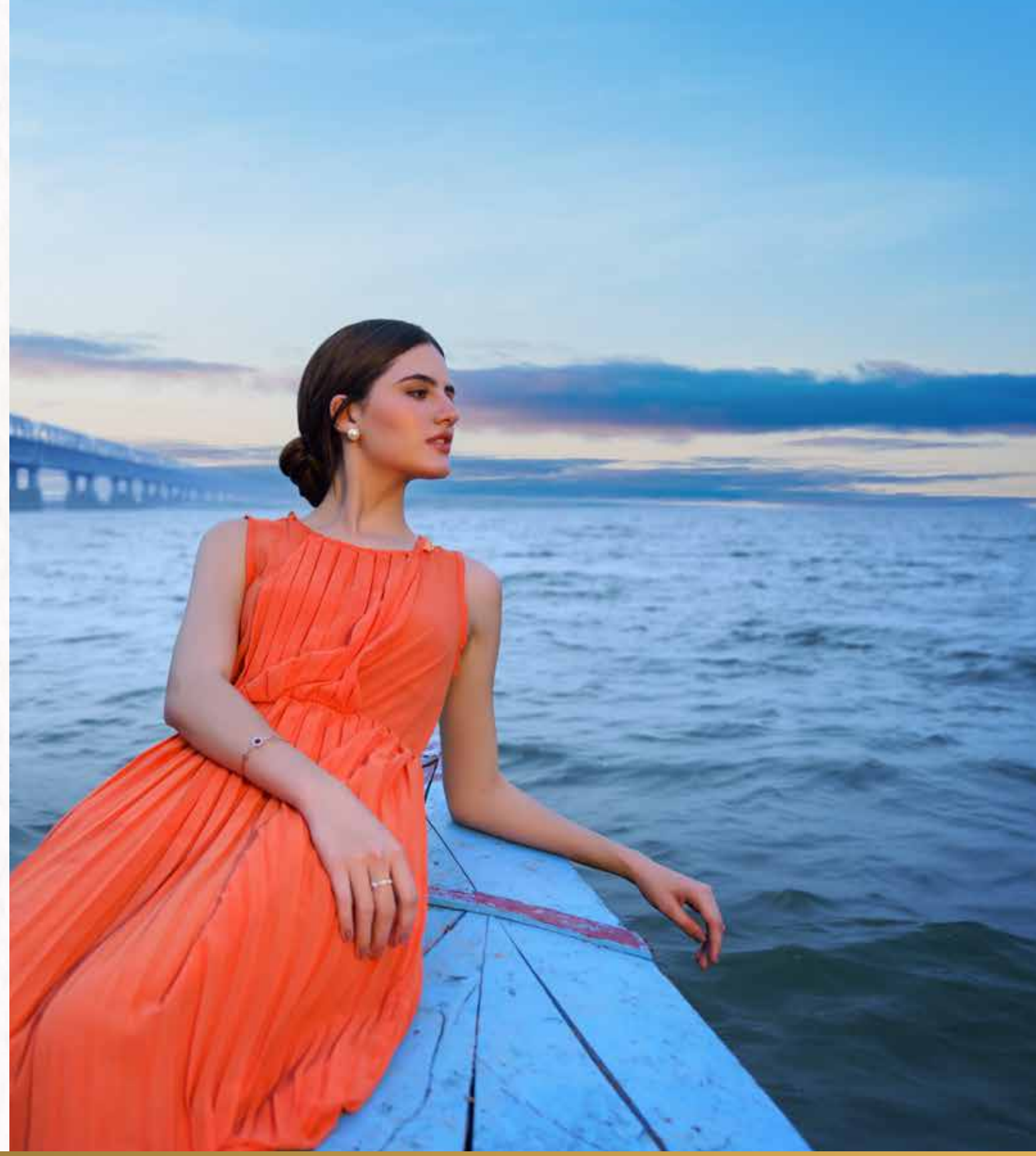
EXPERIENCES

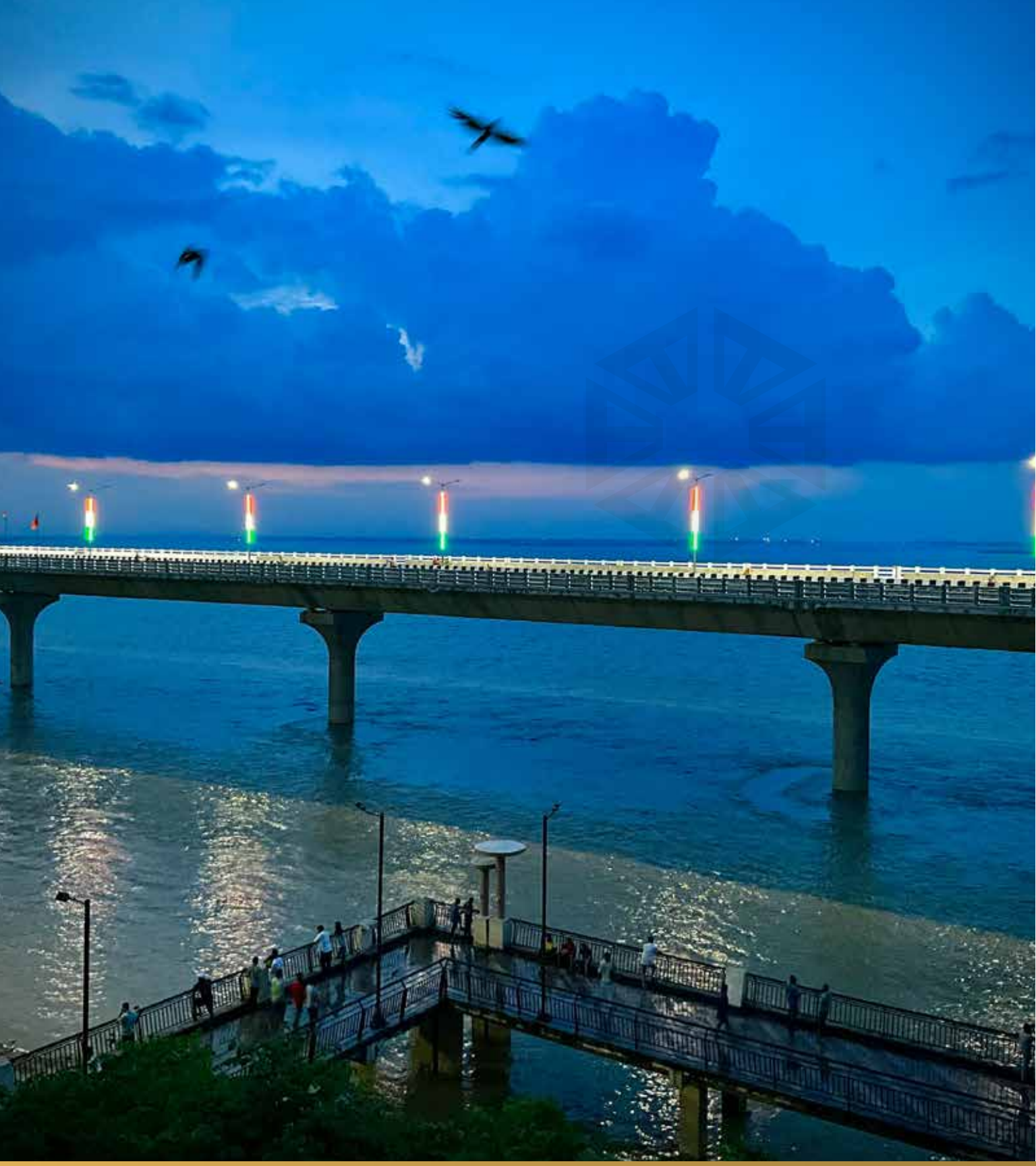
A cultural hub with an expansive and impressive history, Patna is rich in traditions, cuisines, and monuments. Explore the flavours of Patna with our unique dining experiences and rediscover an era gone by with curated trips to nearby historical sites like Golghar, Nalanda, and Rajgir that transport one to a different time.



GOLGHAR

Golghar's architecture blends natural beauty with historical significance. Completed in 1786, the historic domed granary was to be the first of many in Patna to prevent famine. Catch an awesome view of the city from its winding stairways.





EXPERIENCES

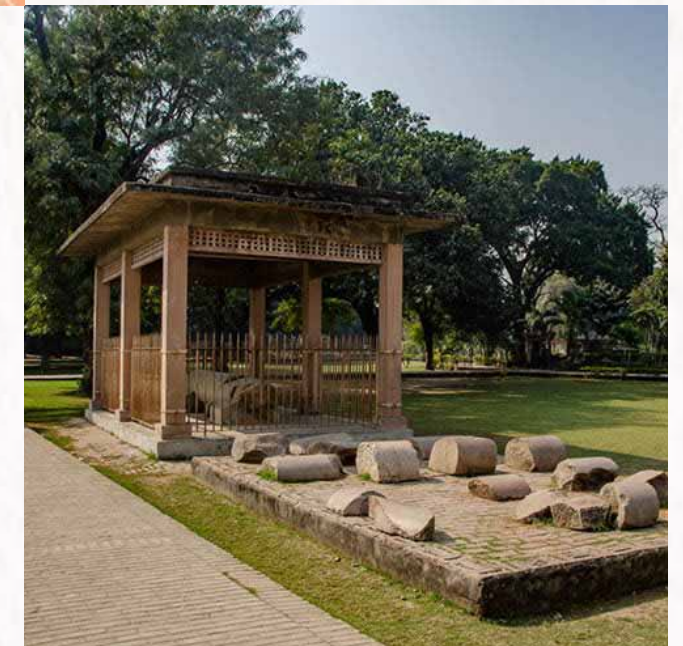
NALANDA, ONE OF THE WORLD'S OLDEST UNIVERSITIES

Nalanda, an ancient centre of learning in Bihar, thrived in the 5th to 12th centuries, attracting scholars worldwide. Its ruins testify to its intellectual legacy. Key sites include Nalanda Museum, the remains of Nalanda University, Venu Van, Kundalpur Digamber Jain Temple, and the Xuan Zang Memorial, showcasing its historic and academic excellence.



RUINS OF PATALIPUTRA/ KUMHRAR PARK

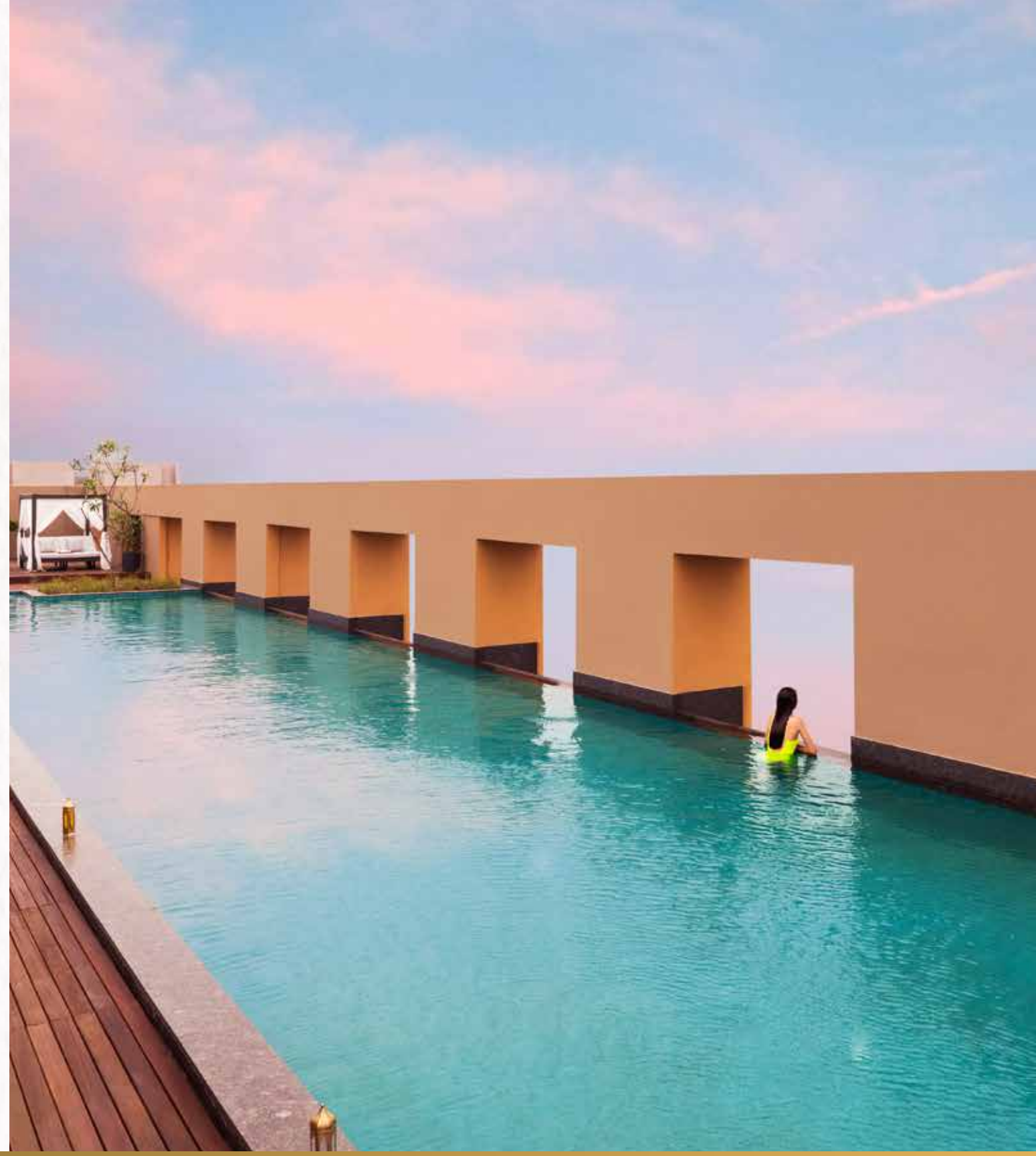
Kumhrar Park showcases the ancient ruins of Patliputra, once a thriving city of the Mauryan Empire. Visitors can explore the remnants of grand buildings and ancient structures, offering a glimpse into Patna's historic past.



EXPERIENCES

ROOFTOP DINING AT THE POOL

Prefer to stay indoors and experience the heritage of this civilisational city? It's time to elevator it up to the rooftop. Enjoy alfresco dining near the pool with cityscape views and a menu blending regional classics, local flavours and international cuisine, paired with a curated selection of fine non-alcoholic wines and mocktails.






TAJ
CITY CENTRE
PATNA

Budha Marg, Lodipur, Opposite Lodipur Fire Station,
Patna – 800001, India