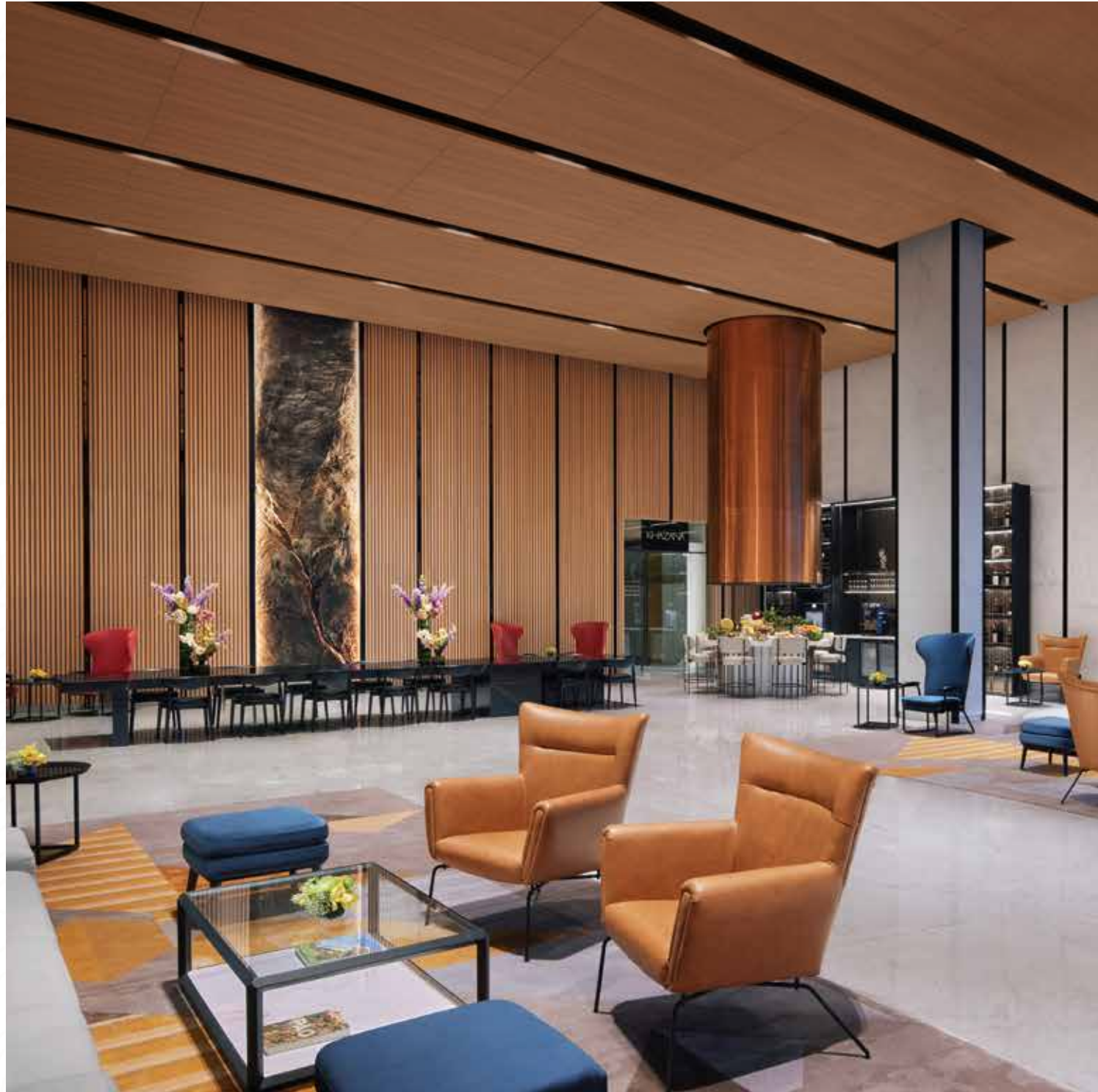




TAJ
THE TREES
MUMBAI

TIMELESS LUXURY NESTLED BY THE OCEANS OF GREEN.



INTRODUCTION

A jewel in the East of Mumbai, Taj The Trees is home to timeless luxury nestled by oceans of green. A marvel for the connoisseurs, Taj The Trees is adorned with 151 well-appointed rooms including suites, award-winning restaurants, J Wellness Circle Spa, and immersive experiences and grand event spaces.

The spectacular Mangrove vistas and impeccable shoreline offer the perfect setting for your Gram-worthy uploads. With an indulgent infinity pool, ergonomic meeting rooms, and much more, here's a landmark where you'd wish time to pause forever.

Taj The Trees is your escapade to relax and rejuvenate. Abound by the most magical views, here's your sanctuary that's just a drive from the city's significant landmarks.

Everything here will surely delight your sensibilities and stay with you long after you check out.



DINING

SHAMIANA

One for the true connoisseurs, Shamiana soothes your cravings with the finest flavours and exotic courses from around the globe. Overlooking the mangroves forest, indulge in a billion shades of bliss here. Our AI fresco settings are sure to offer a breathtaking experience you as savour sumptuousness.

Time: 6.30 am to 1.00 am

Cuisine: Multi-cuisine | Covers: 152



NONYA

Serving Pan-Asian cuisine, Nonya is your most sought-after culinary destination. A tapestry of varied Asian cultural influences, each dish exudes cultural diversity, offering culinary encounters that are cherished for long. Unwind in our AI fresco dining experience and spend spellbinding moments amped by our handpicked cuisines.

Time: Lunch - 12.30 pm to 3.00 pm, Dinner - 7.00 pm to 11.30 pm | Cuisine: Pan Asian Cuisine | Covers: 101

THE MANGROVE BAR

Imagine savouring the most delicious food while gazing at an ocean of greens and enjoying exclusive gin-based drinks. That is our rooftop Mangrove Bar for you.

Time: 4.00 pm to 1.00 am | Covers: 99





ACCOMMODATION

DELUXE ROOM

These elegant rooms exude luxurious sophistication with nature-inspired rugs and furnishings. Besides, it comes with a rapturous view of the infinity pool. These rooms have a gorgeous white marble bathroom and a spacious sitting area which are well-equipped for all your needs.

Size - 36 Sq Mt



DELUXE ROOM MANGROVE VIEW

Have an unparalleled mangrove forest view as you immerse yourself in the finest finesse of luxury. This contemporary room has elegantly furnished interiors and minimalist decor, inspired by mangroves and put together by intricate craftsmanship. With a palette of warm earthy tones, get ready to greet tranquillity every moment.

Size - 36 Sq Mt



ACCOMMODATION

LUXURY ROOM

The room is an artistic marvel basking in plush contemporary decor, sterling craftsmanship, formidable views and a piquant ambience. Rejoice in your spacious abode, ingeniously designed with a standing bathtub greeting ethereal vistas. Let time pass by as you unwind in comfort.

Size - 36 Sq Mt



LUXURY ROOM MANGROVE VIEW

Enchanted. That's how you'll feel every moment as you revel in our Luxury Room with a Mangrove view. Pristine linens and cutting-edge seating space amp the rooms to help you weave some of the fondest moments with enchanting sunrise views.

Size - 36 Sq Mt

TAJ CLUB ROOM

Usher in the regal settings of our Taj Club rooms, which are complemented by privileged access to our exquisite Taj Club Lounge, daily breakfast, evening cocktail hours, one way airport transfer. Designed with sustainability at the core, the space offers the ideal setting to relax, reboot and rejuvenate.

Size - 36 Sq Mt



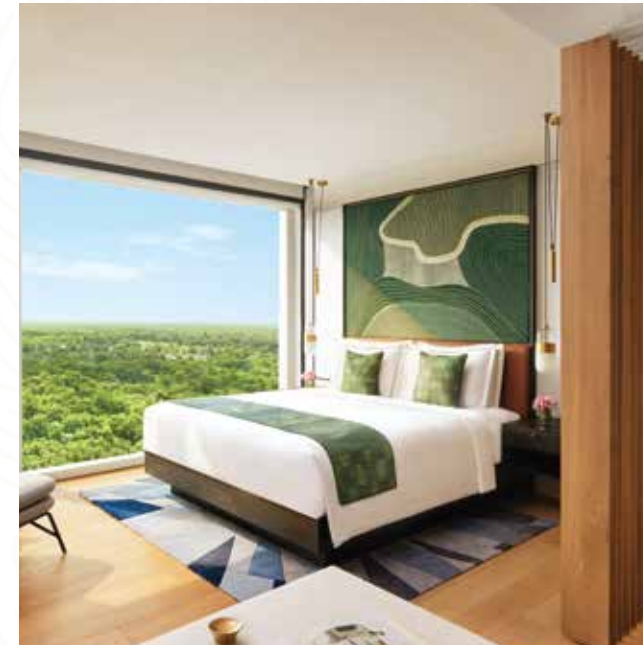


ACCOMMODATION

LUXURY SUITE

With minimalist decor and exquisite artwork, our Luxury Suites are well-appointed sanctuaries designed to indulge your senses. Paired with the privileged access of Taj Club Lounge daily breakfast, evening cocktail hours, one way airport transfer, these suites feature a separate living area, powder room and a master bedroom with spellbinding Mangrove views.

Size - 72 Sq Mt



PRESIDENTIAL SUITE

Our Presidential Suite is a regal masterpiece with a dainty marble bathroom, resplendent dining spaces, and magnificent decor. The room is adorned with hand-tufted rugs, wood furnishings and modern artwork, extending royalty in the most magical form and finesse.

Size - 202 Sq Mt



EVENTS & BANQUETS

BALLROOM

An opulent pillarless space suitable for majestic celebrations, meetings & conventions. A radiant geometrical reflective ceiling complimenting the carpet makes this space absolutely perfect for any formal or informal gatherings.

Area: 643 Sq.Mts | Max Capacity: 550 in theatre seating



PALASH

A stylish space with impressive aesthetics and state-of-the-art modern equipment makes this venue ideal for corporate & intimate gatherings.

Area: 167 Sq.Mts | Max Capacity: 85 in theatre seating

BOARD ROOMS

Our state-of-the-art well-equipped 14-seater boardroom spaces Kadamba, Parijat & Amaltas stretches over an area of 70 square metres and they are designed keeping in mind all the pre-requisites of our patrons.

Area: 70 Sq.Mts | Max Capacity: 14





EXPERIENCES

THE ART WALK

Go on a visually stunning art walk put together by renowned artists where you'll encounter captivating masterpieces like Imagine Studio, Worship for All, Non-Object (Spire), Zero, Martin Wei, and Broken Circle.

Timings: Daily, 5.00 pm to 6.00 pm



THE MANGROVES ON CANVAS

Experience the serene beauty of nature as you paint the intricate mangroves at The Mangrove Bar. With a gin-based cocktail in hand, let your creativity flow amidst the lush greenery and tranquil waters. Dive into a world of artistic inspiration, where every brushstroke captures the essence of this coastal oasis. Immerse yourself in the art of relaxation at The Mangrove Bar.

Timings: Wednesdays, from 4.00 pm to 5.00 pm



EXPERIENCES

HEAL AT THE TREES

Discover the wisdom of the trees through soothing sound healing sessions offered as part of our weekly wellness program at the J Wellness Circle. The sound healing is designed to promote mental health and provide a sense of calmness and relaxation. Allow the calming melodies to wash over you and transport you to a state of tranquillity and bliss.

Timings: Sundays, 11.00 am to 12.00 pm



THE MUMBAI TALKIES

Delve into stories about the rich culture, heritage, and industrial history of Mumbai narrated by an expert. Immerse yourself in the captivating tales that paint a vivid picture of Mumbai's uniqueness.

Next, you'll be taken to the centre of a collaboration between two iconic legacies, the Godrej Group and the Tata Group with valuable insights into this noteworthy partnership.

Timings: Fridays, 5.00 pm to 6.00 pm





EXPERIENCES

VRIKSH, THE SIGNATURE EXPERIENCE

The most iconic experience curated by the essence of Taj The Trees, The Vriksh is a signature therapy inspired by nature's bounty. Commence with a soothing foot ritual, then an indulgent body wrap infused with natural cooling herbs, followed by a relaxing massage.

Timings: Every day, from 8.00 am t o 8.00 pm



THE LITTLE GARDENER

The Little Gardener is designed with the essence of familial connections to bring you and your younger ones on a whimsical adventure. Unleash creativity as you craft a symbolic Family Tree, intertwining the past and the present with each delicate branch. Delight in crafting ornaments from twigs and leaves and sowing a cherished memento.

Timings: Fridays and Saturdays, 4.00 pm to 5.00 pm.



EXPERIENCES

THE NIGHT RUNNER

At Taj The Trees, your health takes centre stage even at dusk. The complex is thoughtfully illuminated and secure, offering a refreshing environment with improved air quality. Pursue your wellness objectives with invigorating night runs, enveloped in the soothing atmosphere.

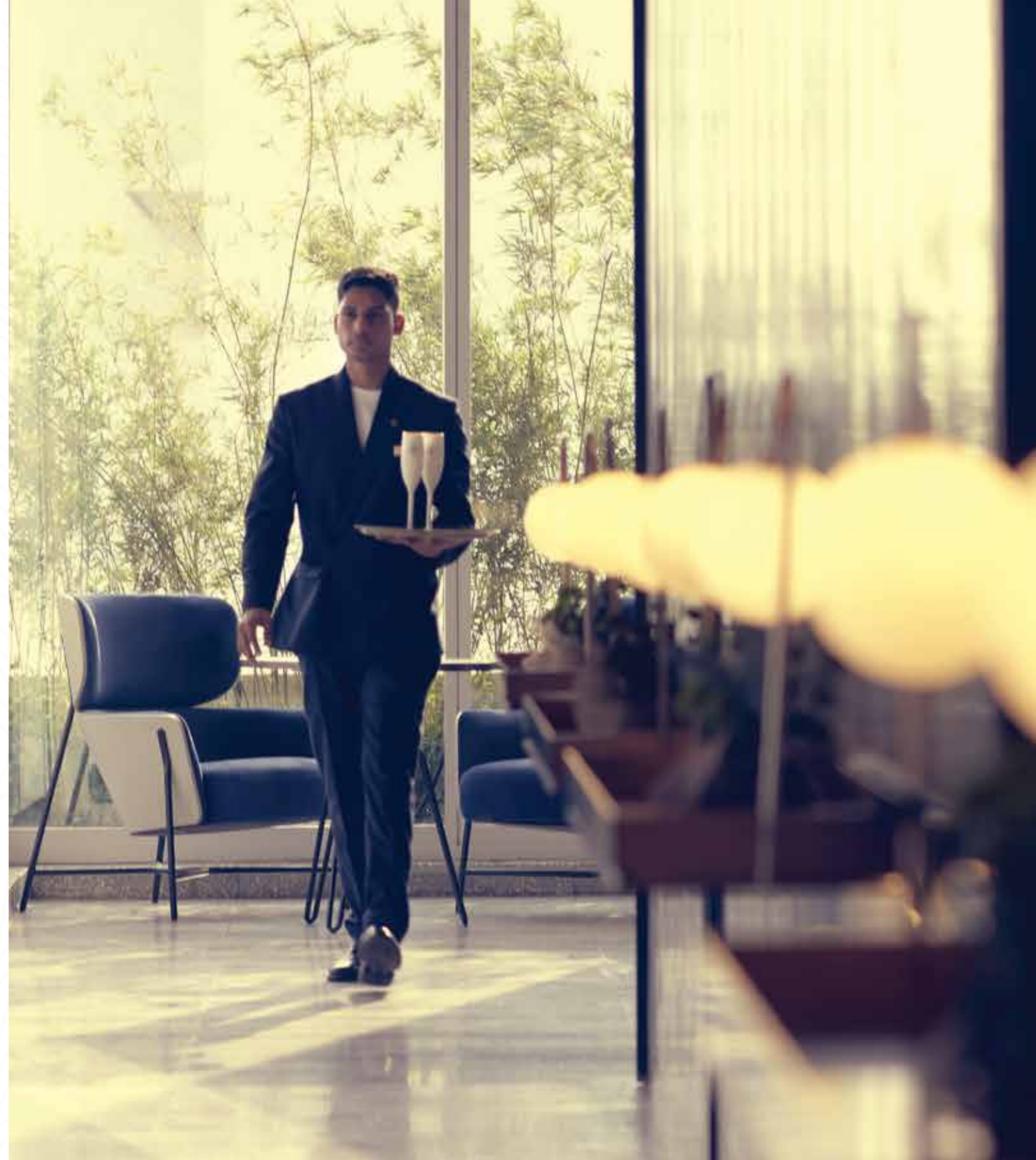
Timings: As per the guest's convenience



THE CHEF'S TABLE, MASTERCLASS

Welcome to an explosion of flavours through conversations and interactions with our Executive Chef. With each bite, indulge, tantalise, and satisfy your taste buds with expert talks, ranging from organic ingredients to vegan cuisine to the Paleo diet. This event is combined with SHE City Woyage and Kids at Taj! A unique opportunity that comes with an interactive DIY activity.

Timings: Thursdays, 3.30 pm to 5.00 pm





EXPERIENCES

THE ASIAN NOMAD

Unwind in a perfect voyage curated exclusively for the discerning palates. Experience epicurean moments as you savour the essence of the region, celebrating its vibrant flavours and time-honoured traditions at Nonya. Under the expert guidance of our culinary masterminds, allow your taste buds to traverse the rich landscapes of Asian cuisines in a 5 course, impeccable meal.

Timings: Monday to Saturday, 12.30 pm to 3.00 pm



THE GIN STORY

The Gin Story at The Mangrove Bar is an exquisite sensory journey tailored for true connoisseurs of luxury. Our master mixologists will guide you through a symphony of flavours, engaging your discerning palate in a harmonious exploration of the finest gins. Let the Mangrove Bar envelop your senses in an opulent embrace, where every sip tells a story of craftsmanship and refinement.

Timings: Every day, 4.00 pm to 5.00 pm.



EXPERIENCES

WINE AND CHEESE FOR 8 AT 8

Our expert Sommelier will guide you through this exquisite pairing, revealing the intricate connections that make them a match made in heaven. Every day at 8 pm, the Master Ritual of Wine & Cheese will be reserved for the discerning 8 guests of Taj The Trees, where they'll indulge in a generous selection of wines and cheeses.

Timings: Every day, 8.00 pm



THE NEIGHBOURHOOD TRAILS

Hop on a Segway or bicycle and explore the vast surroundings in style, immersing yourself in the beauty of nature trails. As you glide through the complex, your eyes will be delighted by the stunning sights, vibrant colours, and picturesque landscapes. Every moment spent here is designed to provide a luxurious and soothing escape, making it an unforgettable sensorial journey.

Timings: Every day, 7.00 am t o 8.00 am






TAJ
THE TREES
MUMBAI

TAJ THE TREES, PIROJSHANAGAR, OFF. EASTERN EXPRESS HIGHWAY, VIKHROLI (EAST), MUMBAI, MAHARASHTRA, 400 079, INDIA.
PHONE: +91 22 6980 0000 / +91 22 6480 4425 | EMAIL: RESERVATIONS.THETREES@TAJHOTELS.COM / RESERVATIONS.MUMBAI@IHCLTATA.COM